

სამეგრელოს ყალბეების – ზუგდიდის, სენაკის, ფოთის,
ხობის – სომხეთის ბაზრის სტრუქტურის აღწერა

კვლევა დატარებულია სამოქალაქო საზოგადოების ინსტიტუტის
მხრით “მცირე ბიზნისის განვითარებისა და დასაქმების
ხელშეწყობის პროექტის” ფარგლებში ოკეანის საერთაშორისო
სამომადგენლოების ფინანსური მხარდაჭერით.

კვლევის მონაწილეობა მიიღო:
ხატუნა ნაფიშვილი – კვლევის ხელმძღვანელი
იაგობა – პროექტის დირექტორი
მაია ალექსიანი – კონსულტანტი

Sinaarsi

| | |
|--|----|
| Tavi 1 kvl evis aRwera da meTodol ogia:..... | 3 |
| Tavi 2 ZiriTadi Sedegebi | 5 |
| Tavi 3 demografiul i suraTi | 13 |
| Tavi 4 dasaqmeba..... | 14 |
| Tavi 5 profesia..... | 23 |
| Tavi 6 samuSao adgil is cvl il ebis mizezebi | 33 |
| Tavi 7 meoradi profesia | 35 |
| Tavi 8 kval ifikaciis miRebis SesaZl ebl obebis Sefaseba..... | 40 |
| Tavi 9 informacia social uri dacvisa da dasaqmebis saxel mwifo saagentos Sesaxeb..... | 47 |
| Tavi 10 damoki debul eba umuSevrobis mizezebTan..... | 51 |
| Tavi 11 biznes garemo | 52 |
| Tavi 12 mikrodafinanseba | 58 |
| Tavi 13 sainformacio vel i | 61 |
| Tavi 14 sazogadoebrivi seqtoris Sefaseba..... | 63 |
| Tavi 15 Semosavl ebi | 66 |
| Tavi 16 SromiTi xel Sekrul ebebi | 74 |

samegrel os qal aqebis – zugdi di, senaki, foTi,
xobis – SromiTi bazris struqturis aRwera

Tavi 1 kvl evis aRwera da meTodol ogia:

wi namdebare kvl evis amocanebs warmoadgenda samegrel os regionis 4 samizne qal aqSi samuSao Zal is arsebul i mdgomareobis Sefaseba Semdegi parametrebi mi xedviT:

1. demografiul i suraTi
2. profesia
3. informirebul oba profesiaze moTxovnis Sesaxeb
4. kval ifikacia
5. kval ifikaciis TviTsefaseba
6. kval ifikaciis amaRI ebis saWiroeba
7. kval ifikaciis amaRI ebis SesaZI ebl oba
8. dasaqmeba
9. oj axis wevrTa dasaqmebis sferoebi
10. dasaqmebis SesaZI ebl obebi qal aqSi, regionSi, qveyanaSi
11. dasaqmebis vada (oj axis wevrTa CaTvl iT)
12. dasaqmebis sferos cvl il ebebi (mizezebi)
13. informacia samuSao adgil ebis Sesaxeb
14. dasaqmebis sasurvel i sfero (parametrebi)
15. ekonomikuri parametrebi
16. Semosavl ebi
17. piradi Semosavl ebi TveSi
18. oj axis Semosavl ebi
19. Semosavl ebis struqtura
20. Semosavl is wyaroebi
21. xarj ebi
22. oj axis biuj etis dagegmva
23. regionSi biznes garemos Sefaseba (sakanonmdebl o, social - ekonomikuri, pol itikuri parametrebi)
24. sakomunikacio arxebi

kvL eva Catarda 2005 wl is oqtomber-dekemberSi. kvL evis meTods warmoadgenda anketireba struqturizebul i anketis saSual ebiT, romelic moicavda 108 kiTxvas. meTodikis SemuSavebi sas gamoyenebili iqna saerTaSoriso safinanso korporaciis mier Catarebul mcire da saSual o biznes-seqtoris pirvel sabaziso kvL eva-angariSi, romelic Catarda kanadis saerTaSoriso

ganviTarebis saagentos finansuri mxardaWeriT¹ (“biznes-garemo saqarTvel oSi mcire da saSual o sawarmoebis Tval sazrisiT” 2004w). romelic midificirebuli iqna winamdebare kvlevis miznebtan SesabamisobaSi. aseve “socialuri kvlevis institutis” mier Catarebuli kvlevis oqsfam saqarTvel os “mikro-kreditebis proeqtis zegavl enis Sefaseba”. kvlevis miznebidan gamodinare anketa moicavda SekiTxvebs, rogorc sakurTriv respondentis aseve maTi ojaxis wevrebis Sesaxeb, gansakurTrebit es Seexeboda arweriT nawils, sadac dasmul iyo SekiTxvebi dasaqmebis sferoebis, profesiebis, Semosavl ebis Sesaxeb.

kvlevis Catarebis areali moicavda samegrel os regionis 4 qal aqs: foTi, xobi, senaki, zugdidi.

respondentTa SerCeva iyo SemTxveviti. samizne qal aqi dayofili iqna 5 regionad dasaxlebis simwidrovis mixedvit SerCeuli iqna bijis zoma.

| qal aqebi | generaluri erTobl ioba | SerCevis moculoba |
|-----------|------------------------|-------------------|
| foTi | 49614 | 209 |
| zugdidi | 50569 | 174 |
| xobi | 28938 | 43 |
| senaki | 6577 | 119 |
| sul | 135698 | 545 |

monacemebi damusavda statistikur programaSi SPSS-10.0, jgufTa Soris sxvaobis dasadgenad gamoyenebuli iqna jgufTa Sedarebis studentis T-kriteriumi.

¹ www.ifc.org/pep

Tavi 2 ZiriTadi Sedegebi

1. gamokiTxul respondentTa oj axebis wevrTa j amuri maCvenebel i 2327-Seadgens, anu respondentTa oj axebis wevrTa saSual o raodenoba 4-is tol ia. kvl evaSi monawil e oj axis wevrTa minimal uri raodenoba 1-is, xol o maqsimal uri raodenoba 14-is tol ia.
2. gamokiTxul respondentTa oj axis 46.8%-i (1098) Sromisunariani wevria, xol o 54,2% (1229) Sromisuunaro, sapensio asakisa da arasrul wl ovanTa CaTvl iT. SromisunarianTa daaxl oebiT Tanabari raodenoba miekuTvneba dausaqmebel (37,1%) da mudmivad dasaqmebul , anazRaurebad (38,2%) nawil s. gacil ebiT nakl ebi arian periodul ad dasaqmebul ni _ 15,8%, kidev ufro mcirea regul arul ad dasaqmebul Ta ricxvi _ 8,7%.
3. rogorc Sedegebma aCvena Tavad respondentTa Soris dausaqmebel Ta saerTo procentul ma maCvenebel ma Seadgina 36.9%
4. gamokiTxul i oj axebis struqtura ganaTI ebis mixedviT aseTia: dawyebiTi ganaTI eba aqvs 1,8%, arasrul i saSual o ganaTI eba (9_8 wel i) 5,29%-s, saSual o ganaTI eba 20,50%-s, arasrul i saSual o, profesiul i ganaTI eba 1,70%-s, saSual o profesiul i ganaTI eba 4,68%-s, arasrul i saSual o teqniki ganaTI eba 2,89%-s, saSual o, teqniki ganaTI eba 16,68%-s, arasrul i umaRI esi ganaTI eba 6,40%-s, umaRI esi ganaTI eba 40,06%-s
5. dasaqmebul respondentTa umravl esoba saqmianobs vaWr obisa (35,7%) da ganaTI ebis sferoSi (20,8%).
6. periodul i samuSaoTi dasaqmebul ebs yvel aze xSirad ar akmayofil ebT anazRaureba (41,9%) da samuSao pozicia (43,4%), xol o srul iad akmayofil ebT samuSaos adgil mdebareoba (51,2%) da damqiravebl is damokidebul eba (50,4%)
7. respondentTa arasapensio asakis Sromisunarian wevrTa Soris periodul samuSaos asrul ebs 15.8%. droebiTi samuSaos Sesaxeb yvel aze xSirad respondentebi da maTi oj axis wevreb i informacias iReben nacbobebis da naTesavebis saSual ebiT _ 66.7%, xol o yvel aze iSviaT SemTxvevaSi ki social uri dacvisa da dasaqmebis saxel mwifo saagentos (Sromis birJis) saSual ebiT 2.3%.
8. kvl evis Sedegebidan gamomdinare im respondentTa Soris roml ebic periodul ad arian dasaqmebul ni 49.6% SemTxvevaSi damqiravebel Tan ar formdeba xel Sekrul eba.
9. droebiT samuSaos ZiriTad samuSaosTan erTad respondentTa saerTo raodenobidan 545 - mxol od 39 SemTxvevaSi asrul eben rac procentul ad 7,2%-is tol ia.

10. respondentTa samuSao adgil is cvl il ebis ZiriTadi mizezebia: dabal i anazRaureba 44.3%, cudi samuSao pirobebi – 16.5%, samsaxuris gauqmeba - 12.7%, Sencireba – 10.1%, oj axuri pirobebi 11.4%. xol o konfli qti xel mZRvanel obasTan da TanamSroml ebTan Sesabamisad 3.8% da 1.3%.
11. arCevanis SesaZl ebl obis SemTxvevaSi gamokiTxul Ta 55,2%-ma saxel mwifo seqtors mianiWa upiratesoba, 36,9% kerZo seqtors, xol o 5,5% sazogadoebriv seqtors. 2,4%-ki arCevani ver gaakeTa.
12. gamokiTxul Ta 22,2% aqvs meore profesia, xol o 77.8% meore profesia ar gaaCnia. rom respondentTa im erTobl iobidan visac aqvs meore profesia 52.9% muSaobs meore profesiiT
13. respondentebis mier meoradi profesia umetesad 1995 wl is Semdeg aqvT miRebul i. aseve gamokvl eul i iqna Tu ra iyo meoradi profesiebis miRebis mizezi. rogorc kvl evam aCvena, 41.7%-Tvis meore profesiiS SeZena axal i interesebis gaCenasTan iyo dakavSirebul i, 30.6%-Tvis profesiiS mixedviT samuSao adgil is deficiti, 26.4%-Tvis sxva profesiiS saSual ebiT ufro maRal anazRaurebadi samuSaos povnis SesaZl ebl oba.
14. gamokiTxul Ta 65.7% miicnevs, rom kval ifikaciis done, romel sac iRebs adamiani profesiiS SeZenis procesSi ar aris sakmarisi Tanamedrove moTxovnebis dasakmayofil ebl ad.
15. respondentTa 67,3%-is azriT unda amaRl des profesiiS miRebis adgil ebSi swavl ebis xarisxi, 49.5%-is azriT saWiroa arsebobdes periodul i kval ifikaciis amaRl ebis kursebi, roml ebic daexmareba momuSaves daakmayofil os Tanamedrove moTxovnebi, gamokiTxul Ta mxol od 4.2% Tvl is rom saWiroa periodul i atestaciebi, raTa Semowmdes muSakTa kval ifikacia da samuSaos moTxovnebtan Sesabamisoba. respondentTa umravl esoba 87% Tvl is, rom kval ifikaciis amaRl ebis kursebi unda iyos ufaso, xol o 11,7%-is azriT kval ifikaciis amaRl ebis kursebi unda iyos fasi ani.
16. respondentTa 18,3%- gavli l i aqvT ufaso treningebi im profesiaSi, roml iTac muSaoben. kvl evam aCvena, rom 67%-ma respondentebisa ufaso treningebi gaires im organizaciis iniciativiT, sadac msaxuroben, 23%-ma gaiara sakuTari iniciativiT, xol o 7%-ma treningebis organi ciatoris iniciativiT.
17. gamokiTxul Ta 55%-s ara aqvs informacia social uri daxmarebisa da dasaqmebis saxel mwifo saagentos Sesaxeb. aqvs gagonil i saxel i, Tumca ar icis misi funqciebi 13,90%, aqvs informacia, Tumca arasdros miumarTavs da fiqrobs arc mimarTavs, radgan ar endoba - 5,90%, aqvs informacia, Tumca arasdros miumarTavs, radgan ar daWirvebia 8,30%, aqvs informacia, Tumca arasdros miumarTavs da fiqrobs mimarTavs roca daWirdeba 15,40%.

18. maT Soris visac aqvs informacia social uri daxmarebisa da dasaqmehis saxel mwifo saagentos Sesaxeb 93.6%-s miRebul i aqvs es informacia nacnob-megobrebisagan.
19. kiTxvaze saWiroebis SemTxvevaSi, romel saagentos mimarTavdiT kerZos Tu saxel mwifos. 57.2%-ma dasaqmehis saxel mwifo saagentos mianiWa upiratesoba, 38.2%-ma kerZos, xol o 4.6% arCevani ver gaakeTa
20. 48.6%-is azriT regionSi biznesis ganviTarebis mimarTul ebiT cudi pirobebia, 43.3%-is azriT normal uri, 3.3%-ma miuTiTa, rom biznesis ganviTarebisTvis regionSi kargi pirobebia
21. respondentTa azriT, yvel aze mniSvnel ovani mxardaWera mcire da saSual o bizness regionSi aqvs prezidentis administracias. gamokiTxul Ta 29.7% Tvl is rom prezidentis aparatis mxridan mcire da saSual o biznesi mniSvnel ovan mxardaWeras iRebs
22. respondentTa 45%-ma icis safinanso saSual ebebis moZidvis iseTi saxis meqanizmebis Sesaxeb, rogoric mikrodafinansebaa, 34.5% - ar icis, xol o 20.9% smenia zogadad aseTi saxis dafinansebis SesaZl ebl obebis Sesaxeb. im respondentTagan, visac miumarTavs mikrosafinanso institutebisaTvis 86,9% (107 respondenti) miRebul i aqvs dafinanseba
23. respondentTa oj axis saSual o Semosavl ebi moTavsebul ia 150-300 l aramde Sual edSi, xol o respondentTa piradi Semosavl ebis saSual o mniSvnel oba 51-150 l aris fargl ebSia
24. rogorc Sedegebidan irkveva saSual od TveSi yvel aze mets xarj avs oj axi sakvebze. respondentTa danaxarj ebis saSual o maCvenebl i Seadgens 175.35 l ars. yvel aze maRal i danaxarj i sakvebze dafiqsirda TveSi 1000 l aris odenobiT, xol o yvel aze cota - 10 l ari. yvel aze mcire danaxarj s gamokiTxul Ta oj axebi akeTeben sacxovrebel i pirobebis gaumj obesebaze da ganaTI ebaze, Sesabamisad 12,14 l ari 13,28 l ari. respondentTa 26% akeTebis danazogs. 18.7% Tvl is, rom danazogi SesaZl ebel ia daxarj os biznesis dasawyebad, xol o 16.8% da 15.5% Sesabamisad Tvl is, rom dazogil i Tanxa SesaZl ebel ia daixarj os dasasvenebl ad da ganaTI ebis mi saRebad.
25. sakuTari Semosavl ebis Sefasebisas gamoiyo 5 j gufi:
I j gufi - gamokiTxul i respondentebidan 60,9% Tvl is, rom igi saSual o Semosavl ebis mqonea, Semosavl ebis ganawil eba am j gufSi aseTia 2.4% 50 l aramde, 20.5% 51-150 l aramde, 31.3% 151-300 l aramde, 9% 501-1000 l aramde, 2.1% 1000 l arze zevi T.
II j gufi 25,5% Tvl is rom misi ekonomiuri mdgomareoba mZimea, Semosavl ebi am j gufSi ase ganawil da: 15.1% 50 l aramde, 47.5% 51-150 l ari, 26.6% 150-300 l ari, 6.5% , 6.5% 301-500 l ari da 0.7% 1000 l arze zevi T.
III j gufi 8,6% Tvl is rom misi ekonomiuri mdgomareoba ukiduresad mZimea, - 23.4% 50 l aramde, 44.7% 51-150 l ari, 27.7% 151-300.

IV j gufi 3,5% Tvl is rom misi Semosavl ebi saSual oze metia, 15.8% 301-500 l ari, 73.7% 501-1000 l ari, 5.3% 1000 l arze ze viT.

V j gufi 0,4% Tvl is rom misi Semosavl ebi maRal ia. am j gufSi moxvda 2 respondenti romel Ta Semosaval i 1000 l arze ze viT aris.

26. kvl evis erT-erT amocanas Seadgenda gagvego aformeben Tu ara SromiT xel Sekrul ebobs dasaqmebul i respondentebi damqiravebl ebTan. rogorc Sedegebidan irkveva SromiT xel Sekrul ebas damqiravebel Tan aformebs dasaqmebul Ta 40.2%, ar aformebs – 47.4% xol o pasuxisgan Tavi Sei kava 12.4%. dasaqmebul Ta 34.4% aqvs xel Sekrul ebis piri.

kvl evis ZiriTad amocanas warmoadgenda dagvedgina garkveul i mizez-Sedegobrivi kavSirebi da gansxvavebebi dasaqmebul da dausaqmebel mosaxl eobas Soris. rogorc kvl evam aCvena mosaxl eobis, rogorc dasaqmebul i aseve dausaqmebel i nawil i Semosavl ebis kval ifikaciisa da profesiis kuTxiT homogenuria anu ganawil ebibi oj axis saerTo Semosavl ebSi, respondentTa profesiul suraTSi da damokidebul ebebSi dasaqmebis probl emis mimarT da regionSi biznes-garemos SefasebaSi ar arsebobs. daTvl il i iqna SeWidul oba (korel acia) oj axis wevrTa raodenobasa da oj axis Semosavl ebs Soris. aRmoCnda Zal ian susti dadebiTi kavSiri am or cvl ads Soris.² anu oj axis wevrebi raodenoba sustad moqmedebs oj axis Semosavl is odenobaze. unda aRiniSnos, rom oj axis wevrTa raodenobasa da oj axis xarj ebs Soris kavSiri ar dadasturda.

dadasturda susti dadebiTi kavSiri oj axSi mudmivad anazRaurebad wevrTa raodenobasa da oj axis Semosavl ebs Soris **Pearson Correlation = 0.445****, Correlation is significant at the .01 level (2-tailed).

aseve susti dadebiTi kavSiri arsebobs oj axis kerZo seqtorSi dasaqmebul Ta raodenobasa da oj axis Semosavl ebs Soris anu rac ufro meti raodenobiT aris dasaqmebul i oj axidan kerZo seqtorSi miT ufro didia maRal i Semosavl ebis al baToba. **Pearson Correlation = 0,256**** Correlation is significant at the .01 level (2-tailed).

odnav dabal i maCvenebel i aqvs korel aciis koeficients oj axSi saxel mwifo seqtorSi dasaqmebul ebis raodenobasa da Semosavl ebs Soris. **Pearson Correlation = 0,114**** Correlation is significant at the .01 level (2-tailed).

Tumca statistikurad am or j gufSi gansxvaveba ar dadasturda.

gamokiTxul Tan 12,8% ar umuSavia saerTod da misi SromTi staji 0- is tol ia. aRsaniSnavia, rom samuSao gamocdil ebis arqona axal gazrda asakis 18-35 wl amde adami anebisaTvis ufro damaxasiaTebel ia, vidre 35 wel s ze viT. gansxvaveba asakobriv j gufebis Soris mniSvnel ovania (Sig. (2-tailed)<0.005). anu SesaZl ebel ia iTqvas, rom dRes regionSi gacil ebiT meti 35 wl amde adami ania samuSao gamocdil ebis gareSe, vidre 35 wel s ze viT. Tu SevadarebT

² Spearman's rho Correlation Coefficient=0,17**, Correlation is significant at the .01 level (2-tailed)

or diagramas #(1) da #(2), naTI ad davinaxavT respondentTa ganawil ebis gansxvavebas asakobriv j gufebSi³.

diagrama 1

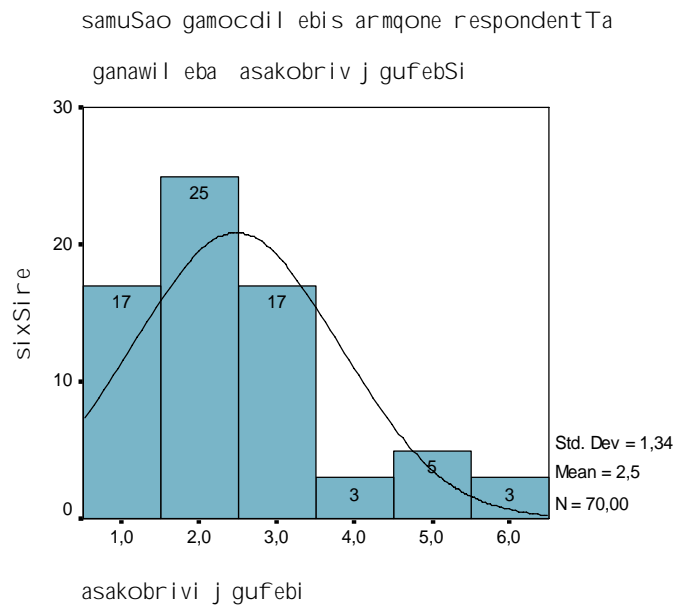
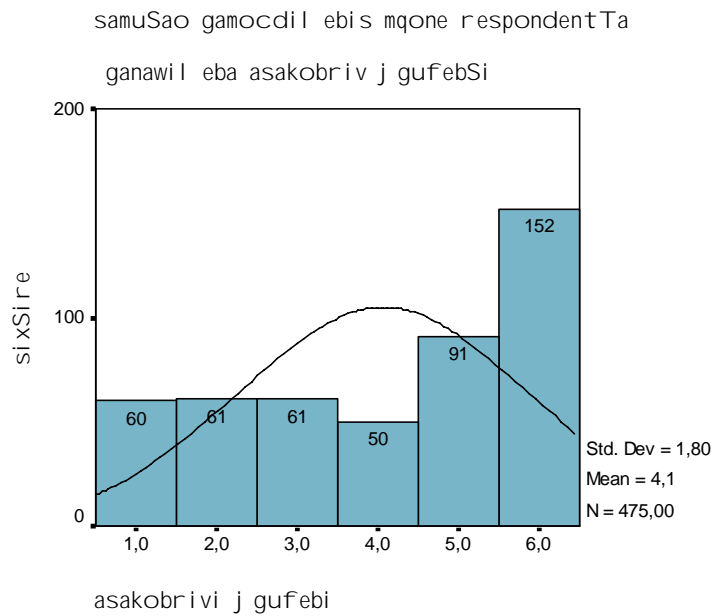


diagrama 2



³ asakobriv j gufebis ganmar teba: 1. 18-25 wel i 2. 26-30 wel i 3. 31-35 wel i 4. 36-40 wel i 5. 41-45 wel i 6. 46-55 wel i

respondentTa saSual o samuSao staJi aris 15.8 wel i yvel aze maRal i staJi kvl evisas gamoikveTa 40 wel i - pedagogi, xol o yvel aze dabal i 1 Tve, - ekonomisti.

dasaqmebul Ta Soris 82.2%-s samuSao adgil i ar Seucvl ia, erTxel Seicval a samuSao adgil i 9.4%-ma. 2-j er samuSao adgil i Seicval a 5.1%, xol o 3-j er - 1.8%-ma. Sedegebidan gamomdinare SesaZl ebel ia iTqvas, rom samuSao adgil ebis deficiiti uzrunvel yofs muSaxel is damagrebas samuSao adgil ze. umTavresi mizezi, ris gamoc Seicval es respondentebma samuSao adgil i 58.2%-is SemTxvevaSi aris dabal i anazRaureba. unda aRiniSnos, rom maT Soris visac arc erTxel ar Seucvl ia samuSao adgil i 84.2% sakuTari xel fasi ar akmayofil ebs.

unda aRiniSnos aseve, rom dausaqmebel Ta asaki regionSi ufro axal gazrdaa vidre dasaqmebul ebis. kerZod, asakobriv j gufSi 26-35 wel i dausaqmebel Ta procentul i raodenoba 42.1%-ia, roca asakobriv j agufSi 36-55 wel i dausaqmebel Ta procentul i raodenoba mxol od 34.5%-ia. gansxvaveba statistikurad mniSvnel ovania (Sig. (2-tailed)<0.005). aRsaniSnavia, rom asakobriv j gufebis mixedviT gansxvaveba dasaqmebis sferoebSi ar arsebobs, anu regionSi arsebul i dasaqmebis sferoebSi Tanabrad arian ganawil ebul ni sxvadasaxva asakis adami anebi.

kvl evis interest Seadgenda dagvedgina arsebobs Tu ara gansxvaveba dasaqmebis kuTxiT im adami anebis Soris vinc kerZo saswavl ebel Si miRo profesia da maT Soris vinc saxel mwifo sasawavl ebl ebSi miRo profesia. rogorc Sedegebma aCvena im respondentebis Soris visac kerZo saswavl ebel Si aqvs miRebul i ganaTI eba 59.3% ar aris dasaqmebul i, xol o 40,7% dasaqmebul ia, roca saxel mwifo sasawavl ebel Si ganaTI ebamiRebul Ta Soris dasaqmebul obaSi ganawil eba aseTia: dasaqmebul i 66.8% dausaqmebel i 33.2%. dasaqmebul i - gansxvaveba statistikurad mniSvnel ovania (Sig. (2-tailed)<0.005). aRmoCnda susti dadebiTi kavSiri ganaTI ebis miRebis adgil sa da dasaqmebul obas Soris. **Spearman's rho** =0,215**⁴. anu miRebul i monacemebis mixedviT dasaqmebul obas sustad gansazRvravs ganaTI ebis miRebis adgil i⁵.

rogorc kvl evis Sedegebidan irkveva regionSi samuSao adgil ebis Sesaxeb informaciis yvel aze gavrcel ebul i sistema aris informaciis miReba nacnobebis-naTesavebis saSual ebiT, periodul i samuSaos vakansiis Sesaxeb informaciis gamokiTxul Ta 66.7% igebs. am gziT igebs da aseve zogadad samuSao vakansiis Sesaxeb informaciis gamokiTxul Ta 42.4%. gamokiTxul Ta 2.3%-ma aRniSna,

⁴ Correlation is significant at the 0.01 level (2-tailed)

⁵ saxel mwifo Tu kerZo.

rom droebiTi samuSao adgil is Sesaxeb informacia miRo social uri daxmarebisa da dasaqmebis saxel mwifo saagentos saSual ebiT. daaxl oebiT aseTive suraTia saerTod samsaxurSi ayvanis kuTxiTac: ganawil ebiT 13.6%, konkursis wesiT 13.2%, piradi nacnoboba damqiravebel Tan 20.9%, nacnobebis rekomendaci iT 28.1%. aRsaniSnavia, rom is respondentebi, roml ebiT konkursis wesiT arian samsaxurSi miRebul ebi, 61.4% saxel mwifo seqtorsia dasaqmebul i, xol o 34.1 kerZo seqtorsia. saidanac 31.8% msaxurobs ganaTl ebis sferoSi, 18.2% saxel mwifo marTva, 13.6% vaWrobaSi, 9.1% j andacvaSi.

regionSi kval ifikaciis arsebul i done respondentTa 67.3%-is azriT met-nakl ebad akmayofil ebs moTxovnebs, 14.1%-is azriT srul iad akmayofil ebs, xol o 17.1%-is azriT ar akmayofil ebs. gansxvaveba regionSi kval ifikaciis donis SefasebaSi maT Soris, visac gavl ili aqvs da ara aqvs gavl ili kval ifikaciis amaRl ebis kursebi/treningebi ar dadasturda. Sedegebis mixedviT kval ifikaciis kursebi fasiani an ufaso gavl ili aqvs 19.3%-s. aRsaniSnavia, rom sakuTari iniciativiT treningebi gavl ili aqvs mxol od 23%-s. 67%-ma gaiara im organizaciis iniciativiT sadac msaxurobdnen. aRsaniSnavia, rom qal aqebis j gufebSi gansxvaveba sakval ifikacio kursebis gavl asTan ar dadasturda, samizne oTxive qal aqSi daaxl oebiT Tanabari odenobis respondentebis aqvT gavl ili sakval ifikacio kursebi. miuxedavad imisa, rom gamokiTxul Ta mxol od 17% Tvl is, rom kval ifikaciis arsebul i done ar akmayofil ebs moTxovnebs, gamokiTxul Ta 49.5% Tvl is, rom unda arsebobdes periodul i kval ifikaciis amaRl ebis kursebi, roml ebiT daexmareba momuSaves daakmayofil os Tanamedrove moTxovnebi. aRsaniSnavia, rom maT Soris vinc Tvl is, rom unda arsebobdes kval ifikaciis amaRl ebis mokl evadiani kursebi gacil ebiT didi procentul i raodenoba (45.2%) fiqrobs, rom regionSi kval ifikaciis amaRl ebaze unda zrunavdnen damsaqmebl ebi vidre mTl ianad gamokiTxul i respondentebi (33%). gansxvaveba statistikurad mniSvnel ovania.⁶ respondentTa 29% Tvl is, rom regionSi kval ifikaciis amaRl ebaze unda izrunos social uri dacvisa da dasaqmebis saxel mwifo saagentom. gamokiTxul Ta 87%-is azriT sakval ifikacio kursebi unda iyos ufaso, xol o gamokiTxul Ta 11.7% Tvl is, rom sakval ifikacio kursebi unda iyos fasiani. rac Seexeba regionSi axal i profesiis SeZenis gzebs, gamokiTxul Ta 69.8% Tvl is, rom profesiis Semswavl eli mokl evadiani kursebi unda gaixsnas.

kvl evis amocanas wamoadgenda dagvedgina profesiis arCevis kriteriუმები. profesiას gamokiTxul i respondentebi 76.2% SemTxvevaSi sakuTari unarebis mixedviT arCevdnen, 13.2% SemTxvevaSi

⁶ Sig. (2-tailed)<0.005

oj axis wevrTa survil is mixedviT, xol o 7.7% SemTxvevaSi profesii s Semosavl ianobis mixedviT. meore profesia respondentTa 22.2%-s aqvs. meore profesii s arCevis SemTxvevaSi ki kriteriumi 41.7% SemTxvevaSi iyo axal i interesebi, 30.6% SemTxvevaSi pirvel adi profesii s mixedviT samuSao adgil ebis deficiTi, xol o 24.4% SemTxvevaSi axal i profesii s Semosavl ianoba. gamokiTxul Ta 13.6% meore profesiiT muSaobs, rac meore profesii s mqoneTa 52.9%-s Seadgens. aRsaniSnavia, rom kerZo saswavl ebl ebis geografiul i areal i gansxvavebul ia saxel mwifo saswavl ebl ebis areal isagan. Tu kerZo saswavl ebl ebi mxol od 5 geografiul ares moicavs, saxel mwifo saswavl ebl ebis SemTxvevaSi dasaxel ebul ia 40 geografiul i wertil i, romel ic mxol od saqarTvel os ar moicavs. respondentTa 7.1%-s ganaTl eba miRebul i aqvs saqarTvel os fargl ebs gareT. (ruseTi, latvia, germania) aRsaniSnavia, rom respondentTa 40,6%-s aqvs umaRl esi ganaTl eba.

kvl eva iTval iswinebda dagvedgina respondentTa azriT ra profesiebzea ZiriTadad moTxovna regionSi. yvel aze didi moTxovna respondentTa azriT regionSi aris ucxo enebis special iste bze _ 60.6%. Semdegi reitingul i special oba, razedac didi moTxovna respondentTa azriT eqimis profesiaa _ 51.4%, reitingul i special obaa respondentTa azriT iuristi _ 41.5% da ekonomisti 34.9%, aseve kosmetol ogi 40.2% da mSenebel i xel osani 40.7%. kvl evisas gamoikveTa tendencia, romel ic asxavs muSaxel is fasis gansxvavebas regionsa da qveyanas Soris, respondentTa azriT regionis xel fasebi daaxl oebiT 1,5-j er nakl ebia mTl ianad qveynis masStabiT xel fasebze.⁷ aucil ebel ia aRiniSnos, rom sromis bazarze arsebul i moTxovna profesiebze kvl evaSi moyvanil i struqturis mxol od respondentTa mosazrebis mixedviT aris aRweril i. real uri moTxovna bazarze Sesazl ebel ia dadgenil i iqnas regionSi arsebul i samuSao adgil ebis struqturis Seswavl isa da damsaqmebl ebis gamokiTxvis Sedegad.

im respondentTa 37.2%, vinc muSaobda pirvel adi profesiiT da amjerad aRar muSaobs igive profesiiT (respondentTa 29,9%) amis mizezad asaxel ebs im sferos gauqmebas regionSi, romel sac akmayofil ebda misi profesia, rogorc Sedegebis anal izidan gairkva am repondentTa 15%-is pirvel adi profesia inJineria, 10.3% agronomia, 10.3% teqnol ogi, 13,8 buRal teri.

miuxedavad imisa, rom gamokiTxul Ta mxol od 24,2% Tvl is, rom regionSi axal i profesii s SeZena ar aris xel misawvdomi, umuSavrobis mizezebis Seswavl isas 43.9% daeTanxma gamonaTqvams, rom regionSi umuSevrobis erT-erTi mizezi swored kval ifikaciis amaRl ebis SeuZl ebl obaa, 33.8% Tvl is, rom samuSaos maZiebl ebis arasakmarisi kval ifikacia. 58%-is azriT - informaciis

⁷ ix. Tavi 5

xel miuwdoml oba samuSao adgil ebis Sesaxeb. 52.3% daeTanxma mosazrebas, rom damsaqmabel sa da samuSaos maZiebel s Soris kavSiris efeqturi meqanizmebi ar arsebobs.

Tavi 3 demografiul i suraTi

kvl evaSi monawil eoba miiRO 348 (63,9%) qal ma da 197 (36,1%) mamakacma. maTi asaki ganawil da Semdegnairad: I j gufi 18-25 wl amde 77 respondenti, II j gufi - 26-30 wl amde 86 respondenti, III j gufi - 31-35 wl amde 78 respondenti, IV j gufi 36-40 wl amde 53 respondenti, 41-45 wl amde 96 respondenti, V j gufi - 46-55 155 respondenti.

respondentTa procentul i ganawil eba sqesis da asakis mixedviT mocemul ia diagramaze # (3), # (4),

diagrama 3

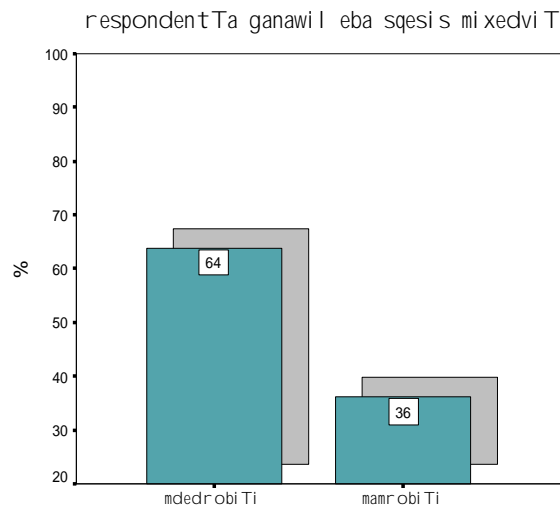
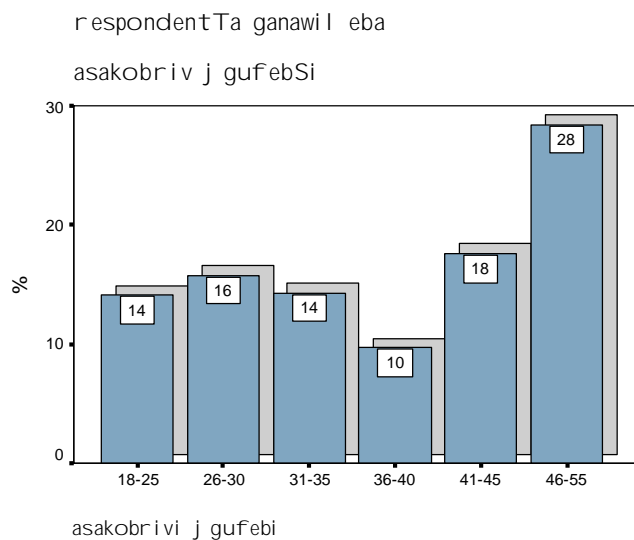


diagrama 4



respondentTa umravl esobas daoj axebul i (317) da dasaoj axebel i (165) pirebi warmoadgendnen.

kvl evaSi monawil e respondentTa social uri statusis mixedviT ganawil eba mocemul ia cxril Si #1

| social uri j gufi | respondentTa raodenoba | % |
|-------------------|------------------------|------|
| uari pasuxze | 8 | 1,5 |
| daoj axebul i | 317 | 58,2 |
| dasaoj axebel i | 165 | 30,3 |
| ganqorwinebul i | 17 | 3,1 |
| qvrivi | 24 | 4,4 |
| martoxel a | 14 | 2,6 |
| sul | 545 | 100 |

cxril i # 1

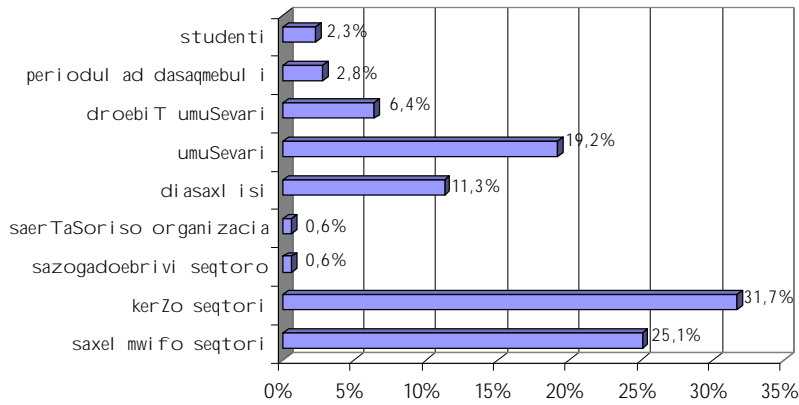
kvl evis erT-erT amocanas warmoadgenda respondentTa oj axebis raodenobrivi maCvenebl ebis Seswavl a. kvl evam aCvena, rom gamokiTxul respondentTa oj axebis wevrTa jamuri maCvenebl i 2327-Seadgens, anu respondentTa oj axebis wevrTa saSual o raodenoba 4-is tolia. kvl evaSi monawil e oj axis wevrTa minimal uri raodenoba 1-is, xol o maqsimal uri raodenoba 14-is tolia.

Tavi 4 dasaqmeba

respondentebisa da maTi oj axis wevrebis dasaqmebul Ta umravl esoba kerZo (31,7%) da saxel mwifo seqtorSi (25,1%) dasaqmebul i. mniSvnel ovani nawil i umuSevaria (19,2%). gamokiTxul qal Ta mniSvnel ovani nawil i diasaxl isia (11,3%). gamokiTxul Ta yvel aze mcire nawil i dasaqmebul ia saerTaSoriso organizaciebsa (0,6%) da sazogadoebriv seqtorSi (0,6%). am j gufebSi ganawil eba mocemul ia diagramaze # (5) da # (6)

diagrama 5

gamokitxul respondentta ganawil eba dasaqmehis j gufebSi

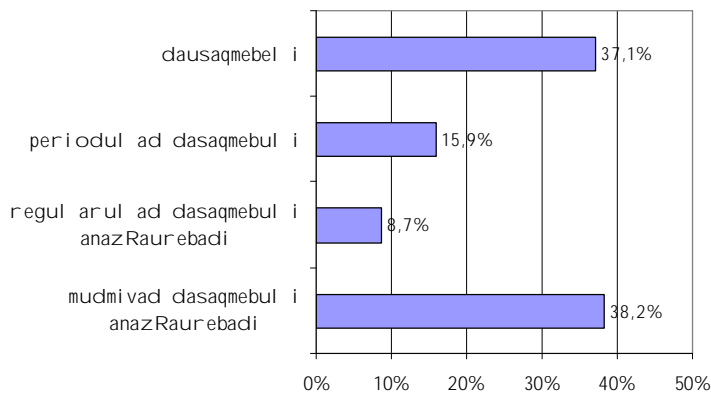


rogorc Sedegebma aCvena respondentTa Soris dausaqmehel Ta saerTo procentul ma maCvenebl ma Seadgina 36.9%⁸.

respondentTa oj axis wevrehis CaTvl iT gamoikveTa Semdegi suraTi: gamokitxul respondentTa oj axis 46.8%-i (1098) Sromisunariani wevria, xolo 54,2% (1229) Sromisunaro, sapensio asakisa da arasrul wlovanTa CaTvl iT. SromisunarianTa daaxl oebiT Tanabari raodenoba miekuTvneba dausaqmehel (37,1%) da mudmivad dasaqmehul , anazRaurebad (38,2%) nawil s. gacil ebiT naklebi arian periodul ad dasaqmehul ni _ 15,8%, kidev ufro mcirearegul arul ad dasaqmehul Ta ricxvi _ 8,7%.

diagrama 6

respondentTa da maTi oj axis wevrTa procentul i ganawil eba dasaqmehis j gufebSi

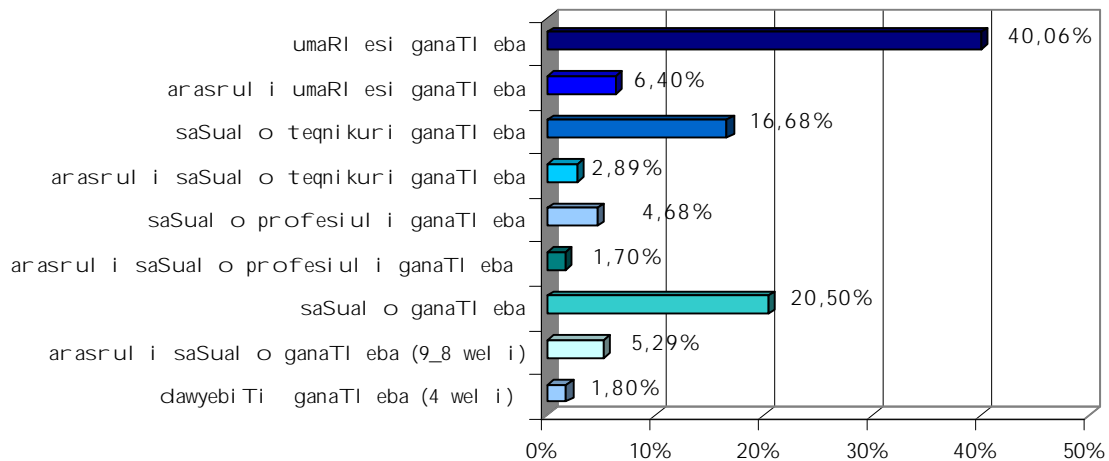


⁸ procentul i maCvenebl i daTvl ilia umeSevris, diasaxl isisa da droebi T umuSevris %-li maCvenebl is Sejamebi T

gamokiTxul i oj axebis struqtura ganaTI ebis mixedviT aseTia: dawyebiTi ganaTI eba aqvs 1,8%, arasrul i saSual o ganaTI eba (9_8 wel i) 5,29%-s, saSual o ganaTI eba 20,50%-s, arasrul i saSual o, profesiul i ganaTI eba 1,70%-s, saSual o profesiul i ganaTI eba 4,68%-s, arasrul i saSual o teqnikuri ganaTI eba 2,89%-s, saSual o, teqnikuri ganaTI eba 16,68%-s, arasrul i umaRI esi ganaTI eba 6,40%-s, umaRI esi ganaTI eba 40,06%-s (ix. diagramaze #7)

diagrama 7

gamokiTxul respondentTa oj axebis ganaTI ebis struqtura



garda dasaqmebisa kvl evis amocanas warmoadgenda rogorc Tavad respondentTa, aseve maTi oj axis wevrTa dasaqmebis sferoebis Seswavl a cxril Si # (2) mocemul ia respondentTa procentul i da raodenobrivi ganawil eba dasaqmebis sferoebis mixedviT.⁹

⁹ dasaqmebis sfero daasaxel a 308 respondentma. saerTo raodenobi dan umuSevarTa saerTo raodenobisa da studentebis raodenobis gamoricxvis Semdeg uari dafiqsirebul ia 92 respondentis SemTxvevaSi.

| saqmi anobis sfero | % | raodenoba |
|--------------------------------------|--------|-----------|
| sofli s meurneoba | 1,60% | 5 |
| saxel mwifo marTva | 8,40% | 26 |
| mSenebi oba | 1,30% | 4 |
| transporti | 6,20% | 19 |
| mrewel oba | 3,60% | 11 |
| vaWroba | 35,70% | 110 |
| saSuamavl o saqme | 0,30% | 1 |
| momsaxureba | 3,20% | 10 |
| kavSirgabmul oba | 2,60% | 8 |
| ganaTI eba | 20,80% | 64 |
| j andacva | 8,40% | 26 |
| social uri uzrunvel yofa | 1,30% | 4 |
| komunal uri/personal uri momsaxureba | 1,30% | 4 |
| Sinameurneoba | 1% | 3 |
| uZravi qoneba | 0,30% | 1 |
| sakonsul tacio momsaxureba | 0,60% | 2 |
| Tavdacva/sazogad.wesrigis dacva | 2,30% | 7 |
| araidenticirebul i | 1% | 3 |
| sul : | 100% | 308 |

cxrili # 2

respondentTa umravlesoba saqmi anobs vaWrobi sa (35,7%) da ganaTI ebis sferoSi (20,8%).
 grafikebze # (8) da # (9) gamosaxulia respondentTa da maTi oj axis wevTa dasaqmebis yvel aze xSirad dasaxel ebuli sferoebi.
 (reitingul adpirveli 5 sfero).

diagrama 8

respondentTa %-l i ganawil eba dasaqmebis sferoebis mixedvit

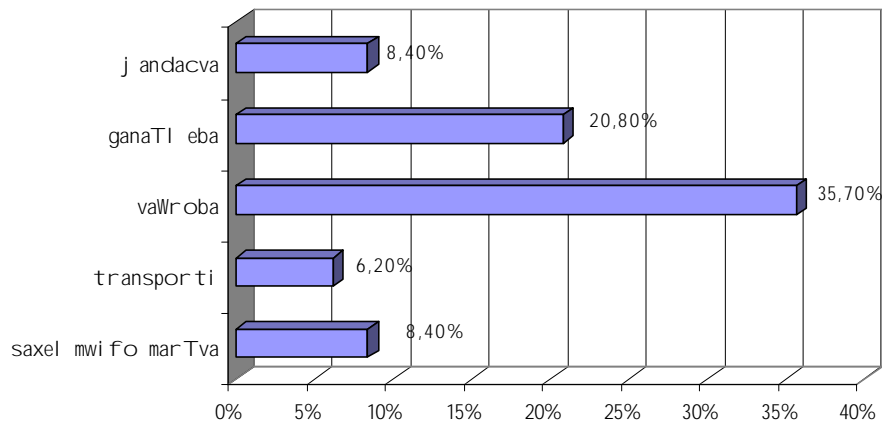
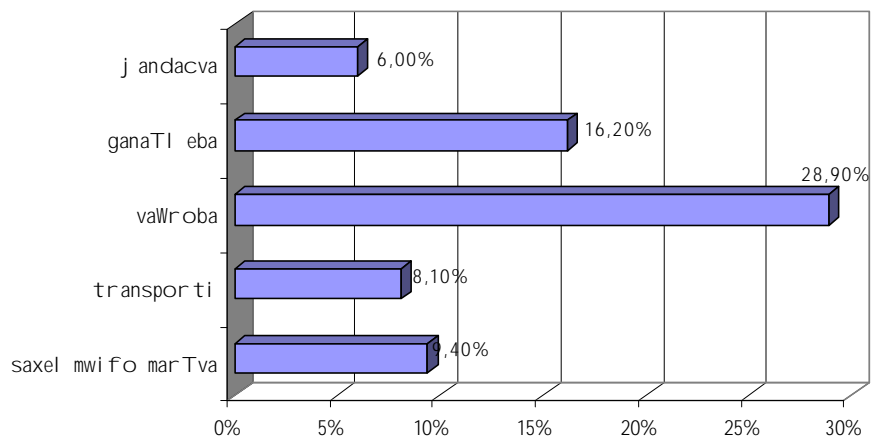


diagrama 9

respondentTa oj axis wevrebis %-l i ganawil eba dasaqmebis sferoebis mixedvit



kvlevis erT-erT amocanas wamoadgenda respondentTa da maTi oj axis wevrTa periodul ad dasaqmebuli nawilis profesiuli suraTis Seswavl a, anu sxvadasxva profesiis adamianebs ra saxis periodul i samuSaos Sesrul eba uwevT da ra sixSiriT aqvT samuSao. respondentTa arasapensio asakis Sromisunarian oj axis wevrTa Soris periodul ad aris dasaqmebuli 176 (15,9%). maTi profesiebi ki ase nawil deba: ix cxrili # (3)

| # | profesia | raodenoba | % |
|----|---------------------------|-----------|--------|
| 1 | manikuri-pedikuri | 10 | 7,50% |
| 2 | biznes konsul tanti | 4 | 3,00% |
| 3 | filologi | 2 | 1,50% |
| 4 | mkeravi | 1 | 0,80% |
| 5 | eqimi | 4 | 3,00% |
| 6 | ucxo enebis special isti | 1 | 0,80% |
| 7 | muSa, xel osani | 29 | 21,80% |
| 8 | kavSir gambul obis muSaki | 1 | 0,80% |
| 9 | gamyidveli | 28 | 21,10% |
| 10 | mcveli | 4 | 3,00% |
| 11 | injineri | 2 | 1,50% |
| 12 | pedagogi | 3 | 2,30% |
| 13 | mZRoli | 12 | 9,00% |
| 14 | meqanizatori | 1 | 0,80% |
| 15 | mommaragebeli | 1 | 0,80% |
| 16 | mdivani-memanqane | 2 | 1,50% |
| 17 | damkabadonebeli | 1 | 0,80% |
| 18 | ekonomisti | 5 | 3,80% |
| 19 | farmacevti | 1 | 0,80% |
| 20 | mSenebeli | 8 | 6,00% |
| 21 | mzareuli | 2 | 1,50% |
| 22 | sportsmeni | 1 | 0,80% |
| 23 | operatori | 1 | 0,80% |
| 24 | masajisti | 1 | 0,80% |
| 25 | meTevze - mezRvauri | 4 | 3,00% |
| 26 | el eqtrikosi | 1 | 0,80% |
| 27 | menerge | 1 | 0,80% |
| 28 | buRalteri | 1 | 0,80% |
| 29 | musikosi, momRerali | 1 | 0,80% |

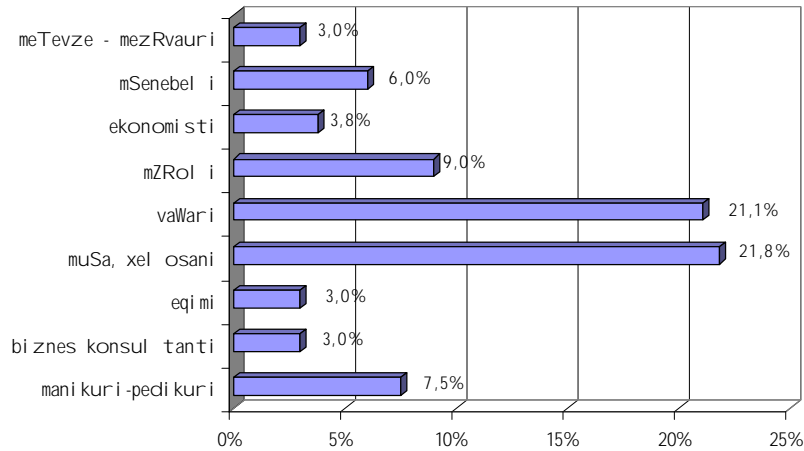
cxrili # 3

periodul ad dasaqmebul Ta yvel aze gavrcel ebul i profil ebi mocemul ia diagramaze #(10). yvel aze gavrcel ebul i profil ia muSa, xel osani da vaWrobis muSaki-gamyidveli. rogorc dasaqmebis sferoebis ganawil ebidan Cans, sakuTari Tavis identifikacias, rogorc dasaqmebul i adamiani - vaWrobaSi droebiT dasaqmebul ebi ufro metad axdenen vidre komunal ur an personal ur momsaxurebaSi droebiT dasaqmebul ebi. cxrilis # 2 mixedvit vaWrobaSi dasaqmebul ia 35,7%, xolo komunal ur/personal ur

momsaxurebaSi mxol od 1.3%, rodesac periodul ad dasaqmebul obaSi am or sferos TiTqmis identuri maCvenebl ebi aqvT.

diagrama 10

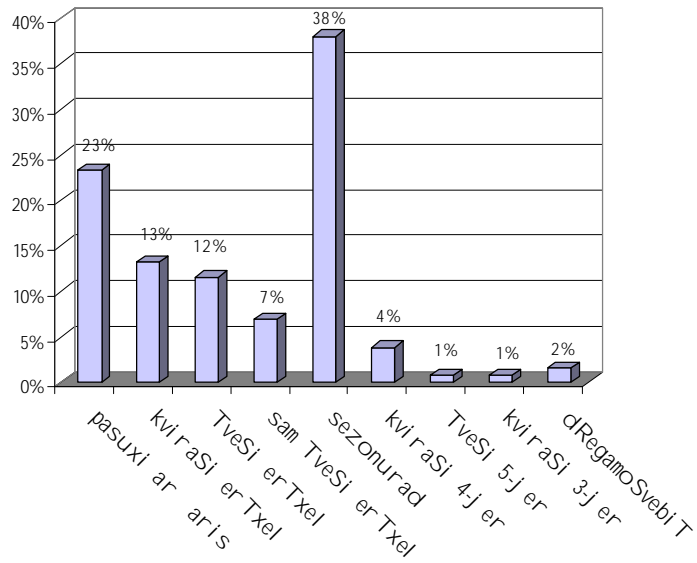
periodul ad dasaqmebul Ta profil ebis %-li ganawil eba



kvlevam aCvena, rom droebiti samuSaos periodul oba meryeobs sezonuri samuSaodan dRegamoSvebiT samuSaomde. kvlevis Sedegebis procentuli maCvenebl ebi mocemulia diagramaze # (11)

diagrama 11

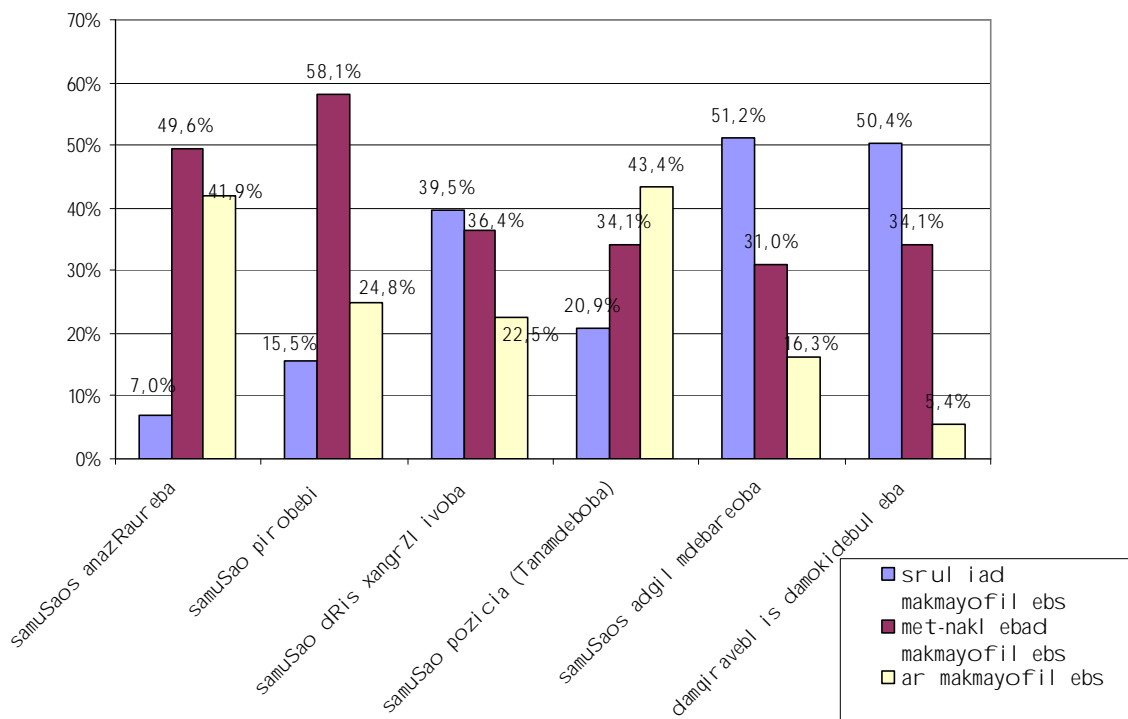
samuSaos periodul obis %-li ganawil eba



kvli evisas xdeboda rogorc periodul i samuSaos aRwera, aseve dasaqmebul Ta da maTi ojaxis wevrebis mxridan am samuSaos Sefaseba. periodul i samuSao fasdeboda Semdegi parametrebis mixedviT: samuSaos anazRaureba, samuSao pirobebi, samuSao dRis xangrZl ivoba, samuSao pozicia (Tanamdeboba), samuSaos adgil mdebareoba, damqiravebl is damokidebul eba. Sefaseba xdeboda sambalian Skalaze -1 dan 1-mde. sadac -1 niSnavs “ar makmayofil ebs”, xolo 1 “sruliad makmayofil ebs” diagrazebze # 12 mocemul ia samuSaos maxasiaTebis ebis mimarT damokidebul ebis procentul i ganawil eba

diagrama 12

periodul i samuSaos Sefaseba

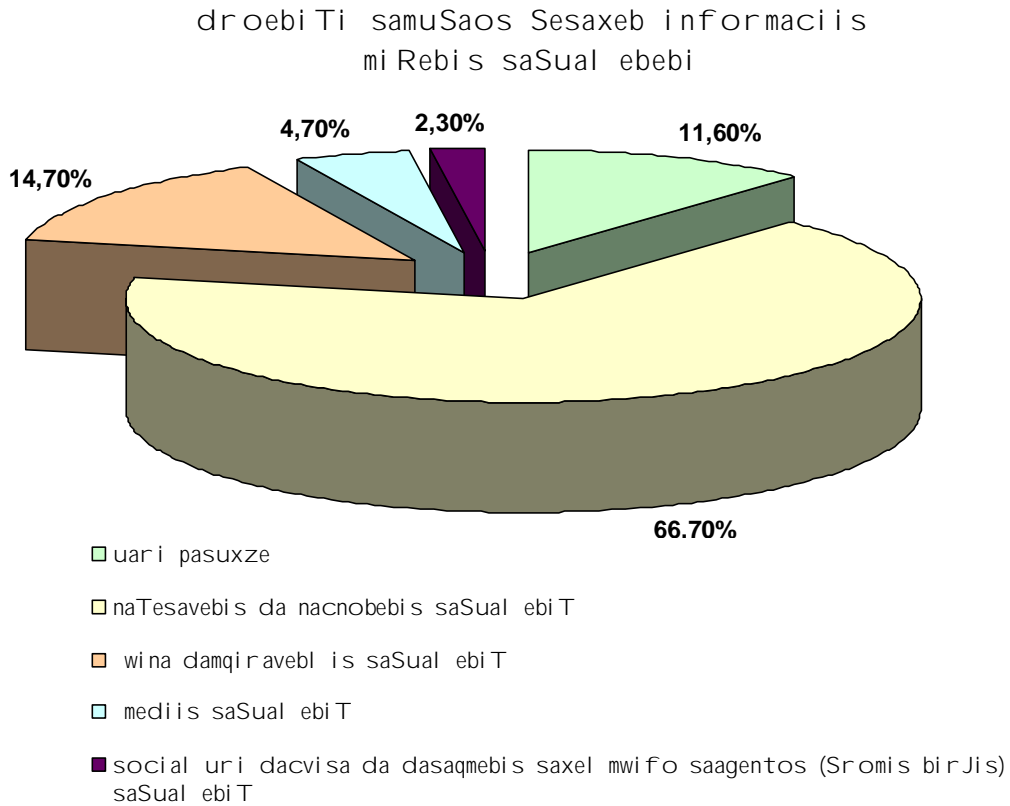


periodul i samuSaoTi dasaqmebul ebs yvelaze xSirad ar akmayofil ebT anazRaureba (41,9%) da samuSao pozicia (43,4%), xolo sruliad akmayofil ebT samuSaos adgil mdebareoba (51,2%) da damqiravebl is damokidebul eba (50,4%).

droebiTisamuSaos Sefasebis garda, Seswavi li iqna droebiTis vakansiis arsebobis Sesaxeb informaciis miRebis yvelaze gavrcel ebul i gzebi. kvli evis Sedegebidan gamomdinare droebiTisamuSaos Sesaxeb yvelaze xSirad respondentebi da maTi ojaxis wevrebis informaciis iReben nacnobebis da naTesavebis saSual ebisT _

66.7%, xol o yvel aze iSviaT SemTxvevaSi ki social uri dacvisa da dasaqmebis saxel mwi fo saagentos (Sromis birJis) saSual ebiT 2.3%.

diagrama 13



kvlevis Sedegebidan gamomdinare im respondentTa Soris roml ebic periodul ad arian dasaqmebul ni 49.6% SemTxvevaSi damqiravebel Tan ar formdeba xel Sekrul eba. kiTxvaze, aformebT Tu ara droebiTi samuSaos Sesrul ebisaxel Sekrul ebas damqiravebel Tan, pasuxebis ganawil eba mocemul ia cxril Si # (4)

| damqiravebel Tan xel Sekrul ebis gaformebis sixSire periodul i samuSaos Sesrul ebisaxel | % |
|---|--------|
| uari pasuxze | 17,04% |
| umetes SemTxvevaSi | 12,40% |
| iSviaT SemTxvevaSi | 10,85% |
| arasdros | 49,61% |
| yovel Tvis | 10,10% |

cxrili # 4

kvlevis amocanas warmoadgenda respondentebis an maTi ojaxis wevrebis mier ZiriTad samuSaosTan erTad droebiTi samuSaos

Sesrula ebis Seswala a. aRmoCnda, rom droebiT samuSaos ZiriTad samuSaosTan erTad respondentTa saerTo raodenobidan 545 - mxol od 39 SemTxvevaSi asrul eben rac procentul ad 7,2%-is tolia. aqedan: restoranSi momsaxure - 3; biznes konsul tanti-1; mwonavi -1; fermis meTval yure -2; meTevze - 5; mwvrTnel i - 2; yarauli - 3; gamyidveli - 8; mSenebel i - 3; meisre - 1; xelosani, muSa - 5; pedagogi - 5.

Tavi 5 profesia

garda periodul ad dasaqmebuli nawilis profesiuli suraTisa kvlevis Sedegebi izlevasaSual ebas aRvwerOT gamokitxul respondentTa da maTi oj axesis profesiuli suraTi. aRsaniSnavia, rom gamokitxuli 545 respondentis mier profesiis sakuTari da oj axesi wevrebis profesiebis 850 pasuxi iqna miRebuli. sul dasaxel da 56 profesia. cxriliSi # (5) mocemulia yvela dasaxel ebuli profesia dasaxel ebis sixSirisa da procentul i ganawil ebis miTitebit, xolo diagramaze # (14) mocemulia yvelaze gavrcelebuli profesiebis sqema¹⁰.

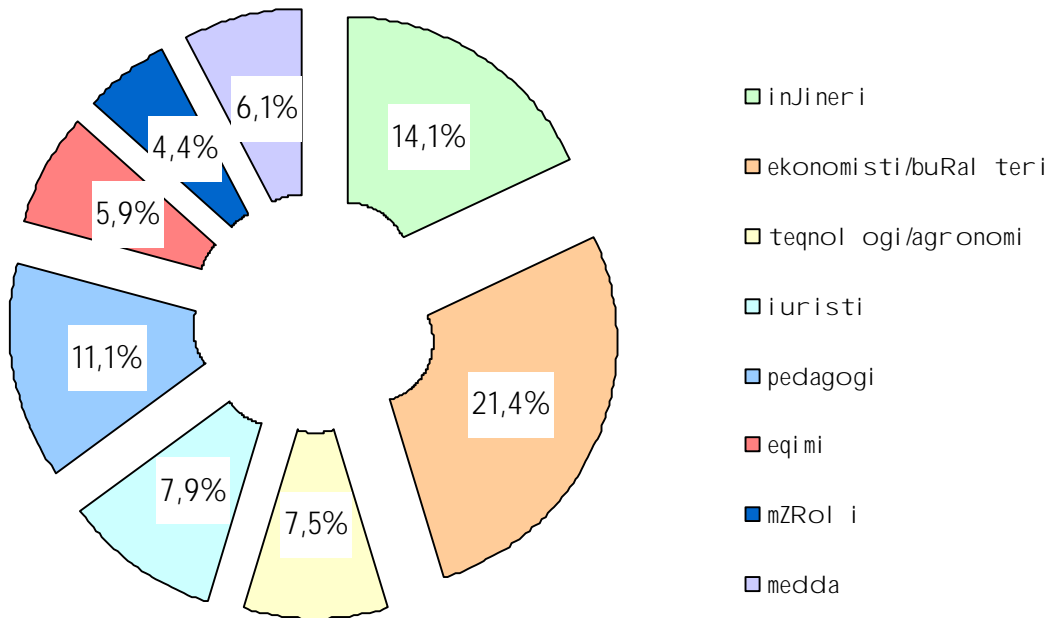
| # | profesia | dasaxel ebuli raodenoba | % dasaxel ebuli SemTxvevidan |
|----|-----------------------|-------------------------|------------------------------|
| 1 | injineri | 92 | 10,8 |
| 2 | manqamaTmSenebeli | 3 | 0,4 |
| 3 | injiner-ekonomisti | 9 | 1,1 |
| 4 | injiner-meqnikosi | 11 | 1,3 |
| 5 | mSenebeli | 14 | 1,6 |
| 6 | arqitektori | 1 | 0,1 |
| 7 | mxatvari | 4 | 0,5 |
| 8 | ekonomisti | 119 | 14,0 |
| 9 | buralteri | 54 | 6,4 |
| 10 | teqnologi | 37 | 4,4 |
| 11 | melioratori, agronomi | 17 | 2,0 |
| 12 | meqanizatori | 10 | 1,2 |
| 13 | el .teqnikosi | 13 | 1,5 |
| 14 | motoristi | 13 | 1,5 |
| 15 | teqnikosi | 8 | 0,9 |
| 16 | veterinari | 2 | 0,2 |

¹⁰ diagramaze #() mocemuli procentul i ganawileba daTvlilia viwrospecializaciebis Sejamebit. profesia injineri moicavs - manqamaTmSenebeli, injiner-meqnikosi, injiner-mSenebeli, mSenebeli. eqimi moicavs: eqimi, farmacevti, stomatologi.

| | | | |
|----|---------------------------|----|------|
| 17 | SemduRebel i | 5 | 0,6 |
| 18 | qimi kosi | 5 | 0,6 |
| 19 | biol ogi | 7 | 0,8 |
| 20 | fizikosi | 6 | 0,7 |
| 21 | matematikosi | 5 | 0,6 |
| 22 | dipl omati | 2 | 0,2 |
| 23 | fil osofosi, pol itol ogi | 3 | 0,4 |
| 24 | xel ovnebaTmcode | 2 | 0,2 |
| 25 | Jurnal isti | 3 | 0,4 |
| 26 | fil ol ogi | 25 | 2,9 |
| 27 | iuristi | 67 | 7,9 |
| 28 | pedagogi | 94 | 11,1 |
| 29 | ucxo enebis special isti | 12 | 1,4 |
| 30 | istorikosi | 10 | 1,2 |
| 31 | musi kosi | 3 | 0,4 |
| 32 | msaxiobi, qoreografi | 6 | 0,7 |
| 33 | bibl ioTekari | 1 | 0,1 |
| 34 | eqimi | 31 | 3,6 |
| 35 | stomatol ogi | 6 | 0,7 |
| 36 | medda | 52 | 6,1 |
| 37 | farmacevti | 13 | 1,5 |
| 38 | mexanZre | 1 | 0,1 |
| 39 | pol iciel i | 2 | 0,2 |
| 40 | dal aqi | 3 | 0,4 |
| 41 | mkeravi | 7 | 0,8 |
| 42 | mZRol i | 37 | 4,4 |
| 43 | mcxobel i | 1 | 0,1 |
| 44 | xel osani | 10 | 1,2 |
| 45 | mbeWdavi | 1 | 0,1 |
| 46 | tel egrafisti | 1 | 0,1 |
| 47 | zeinkal i | 2 | 0,2 |
| 48 | mzareul i | 1 | 0,1 |
| 49 | mebaJe | 2 | 0,2 |
| 50 | mezRvaur i | 6 | 0,7 |
| 51 | spor tsmeni | 2 | 0,2 |
| 52 | vaWar i | 6 | 0,7 |
| 53 | muSa | 1 | 0,1 |
| 56 | operatori | 2 | 0,2 |

cxrili # 5

yvel aze gavr cel ebul i profesiebi



garda respondentTa da maTi oj axis wevrTa profesiebis aRwerisa, kvl eva iTval iswinebda gagvego respondentTa Sefaseba ama Tu im profesiaze moTxovnis arsebobaze. miRebul i Sedegebidan gamomdinare yvel aze didi moTxovna respondentTa azriT aris ucxo enebis special istebze _ 60.6%. 31, 2% Tvl is rom am special obaze met-nakl ebi moTxovnaa, mxol od 3.9% miCnevs, rom am special obaze maT regionSi moTxovna ar aris. Semdegi reitingul i special oba, razedac didi moTxovnaa respondentTa azriT eqimis profesiaa _ 51.4%, am special obaze met-nakl ebi moTxovnaa miCnevs 33.4% da ar aris moTxovna maT regionSi am special obaze ki 10.3%. aseve reitingul i special obaa respondentTa azriT iuristi _ 41.5%. respondentebS miCniAT, rom am special obaze didi moTxovnaa, 47.5% Tvl is rom am special obaze met-nakl ebi moTxovnaa, mxol od 6.4% miCnevs, rom am special obaze maT regionSi moTxovna ar aris. cxril i # (6) mocemul ia dasaxel ebul i profesiebis ganawil eba regionSi maTze moTxovnis mixedvit respondentTa SefasebiT.

| # | profesi a | moTxovna | | |
|-----|--------------------------|-------------------|---------------------------|----------------------|
| | | didi moTxovna (%) | met-nakl ebi moTxovna (%) | ar aris moTxovna (%) |
| 1. | iuristi | 41.5 | 47.5 | 6.4 |
| 2. | ekonomisti | 34.9 | 49.7 | 6.2 |
| 3. | ucxo enebis specisl isti | 60.6 | 31.2 | 3.9 |
| 4. | inJineri | 23.1 | 46.8 | 25.0 |
| 5. | musikosi | 5.9 | 44.0 | 44.6 |
| 6. | pedagogi | 34.5 | 46.8 | 13.4 |
| 7. | eqimi | 51.4 | 33.4 | 10.3 |
| 8. | msaxi obi | 9.4 | 33.2 | 52.1 |
| 9. | fsiqol ogi | 22.9 | 38.9 | 32.5 |
| 10. | sociol ogi | 11.9 | 41.1 | 41.5 |
| 11. | xel ovnebaTmcodne | 9.7 | 37.2 | 47.2 |
| 12. | fil ol ogi | 21.5 | 54.7 | 18.7 |
| 13. | mxatvari | 8.8 | 38.2 | 47.2 |
| 14. | dal aqi | 28.4 | 48.8 | 16.9 |
| 15. | kosmetol ogi | 40.2 | 41.5 | 12.5 |
| 16. | mSenebel i xel osani | 40.7 | 40.7 | 13.6 |
| 17. | mzareul i | 28.4 | 44.6 | 21.7 |
| 18. | el eqtrikosi | 34.7 | 49.2 | 10.5 |
| 19. | mimtani | 22.4 | 46.8 | 25.5 |
| 20. | santeqnikosi | 29.5 | 48.1 | 17.1 |
| 21. | makl eri | 15.6 | 41.3 | 37.1 |
| 22. | mompirkeTebel i | 23.9 | 56.1 | 14.5 |

cxrili # 6

garda moTxovnis Seswavi isa kveli Tval iswinebda respondentebis SeefasebinaT TiToeuli profesia arsebuli Sromis anazRaurebis mixedvit da aseve SeefasebinaT maTi azrit ramdeni unda iyos ama Tu im profesii anazRaureba. miRebuli monacemebidan datvili iqna saSualo, romel Ta ganawileba mocemulia cxrili # (7).

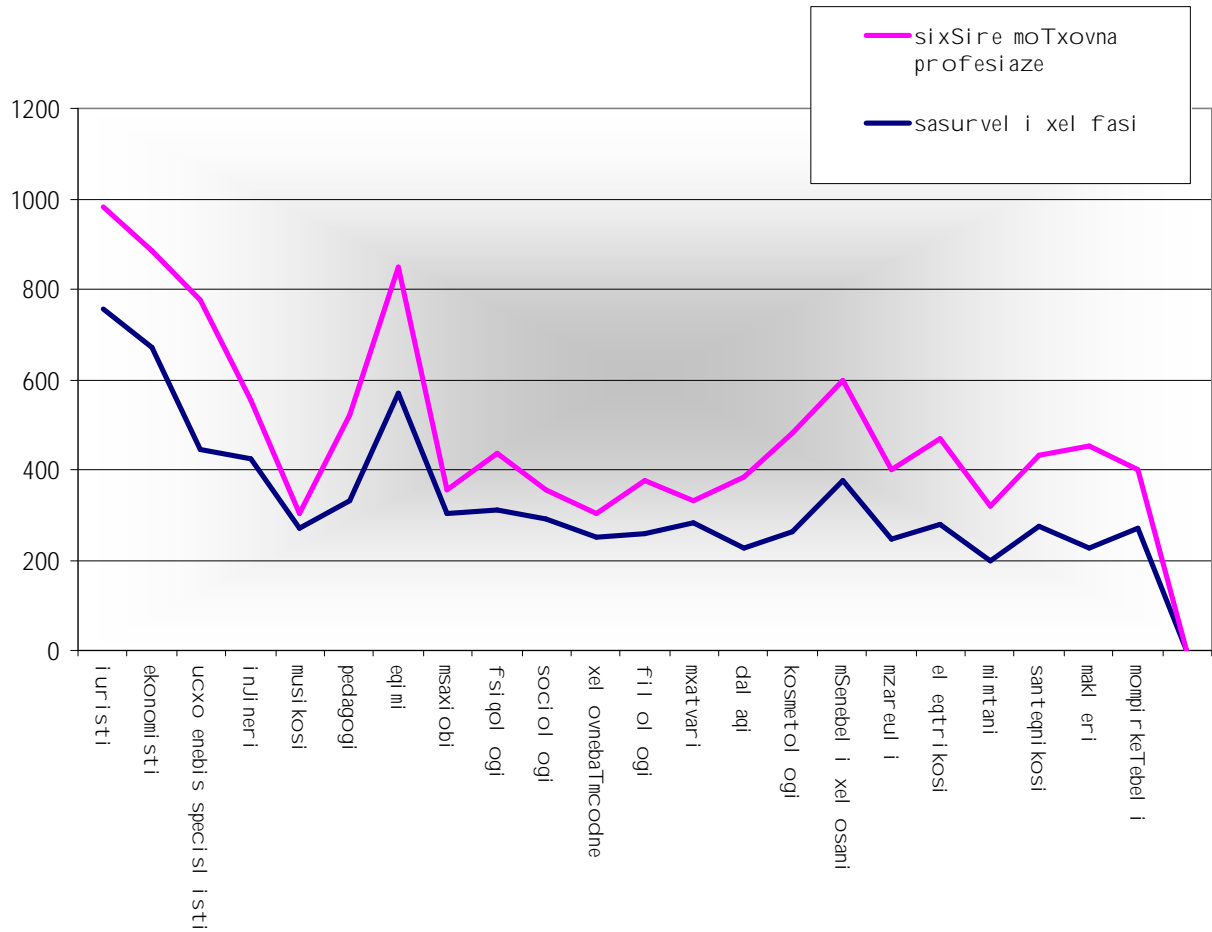
respondentTa azriT rogoria da rogori unda iyos TiToeul i profesiiS SromiTi anazRaureba TveSi?

| # | profesia | SromiTi anazRaureba | | ramdeni unda iyos | koeficienti regioniSa da qveyanaSi anazRaurebas Soris | koeficienti regioniSa da sasurvel da arsebul anazRaurebas Soris |
|---|--------------------------|---------------------|-----------|-------------------|---|---|
| | | qveyanaSi | regi onSi | | | |
| | iuristi | 488 | 314 | 755 | 1,55 | 2,4 |
| | ekonomisti | 421 | 274 | 670 | 1,54 | 2,4 |
| | ucxo enebis specisl isti | 313 | 218 | 445 | 1,44 | 2,0 |
| | inJineri | 257 | 174 | 426 | 1,48 | 2,4 |
| | musikosi | 196 | 126 | 272 | 1,56 | 2,2 |
| | pedagogi | 186 | 136 | 332 | 1,37 | 2,4 |
| | eqimi | 331 | 229 | 568 | 1,45 | 2,5 |
| | msaxiobi | 223 | 126 | 305 | 1,77 | 2,4 |
| | fsiqol ogi | 230 | 149 | 310 | 1,54 | 2,1 |
| | sociol ogi | 219 | 133 | 291 | 1,65 | 2,2 |
| | xel ovnebaTmcodne | 201 | 125 | 250 | 1,61 | 2,0 |
| | fil ol ogi | 186 | 126 | 258 | 1,48 | 2,0 |
| | mxatvari | 228 | 139 | 284 | 1,64 | 2,0 |
| | dal aqi | 208 | 130 | 228 | 1,60 | 1,8 |
| | kosmetol ogi | 239 | 151 | 262 | 1,58 | 1,7 |
| | mSenebel i xel osani | 308 | 206 | 375 | 1,50 | 1,8 |
| | mzareul i | 211 | 133 | 246 | 1,59 | 1,8 |
| | el eqtrikosi | 237 | 155 | 280 | 1,53 | 1,8 |
| | mimtani | 172 | 106 | 198 | 1,62 | 1,9 |
| | santeqnikosi | 244 | 159 | 273 | 1,53 | 1,7 |
| | makl eri | 201 | 131 | 227 | 1,53 | 1,7 |
| | mompirkeTebel i | 236 | 162 | 271 | 1,46 | 1,7 |

cxrili # 7

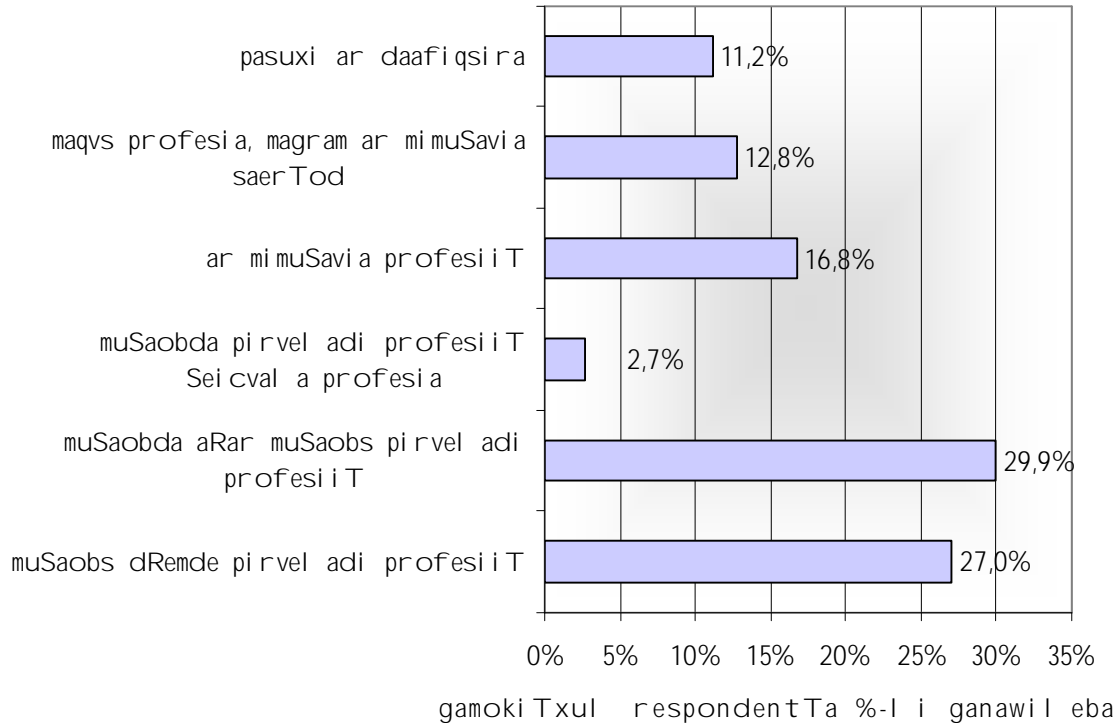
diagramaze # (15) mocemul ia grafikuli Sedareba profesiebze moTxovnebsa da maTze sasurvel anazRaurebas Soris. grafikze ar aris mocemul i mniSvnel obebi, radgan am grafikebis Sedareba mxol od sqematuria.

diagrama 15



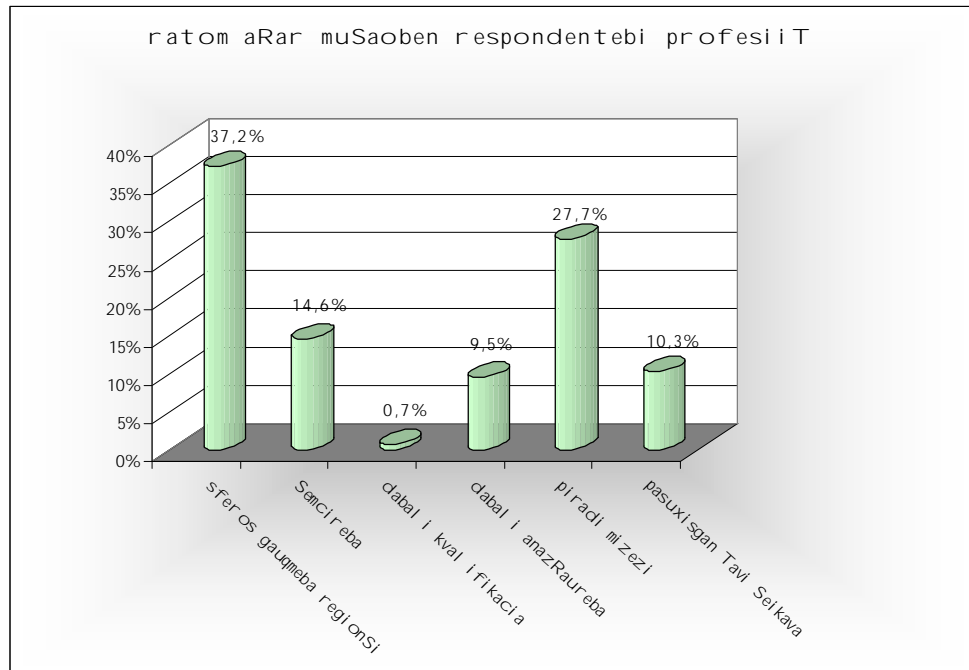
kvl evis monacemebidan gamomdinare gamokitxul respondentTa dasaqmebuli nawilidan 46,7% (255 respondenti) pirveladi profesiaT muSaobs anumuSavia, gamokitxul respondentTa 17,8% (97) ara aqvs profesia, xolo respondentTa ganawileba pirveladi profesiaT dasaqmebulobis mixedvit visac aqvs profesia mocemulia diagramaze # (16)

pirvel adi profesiiT dasaqmebul oba maT Soris
visac aqvs profesia



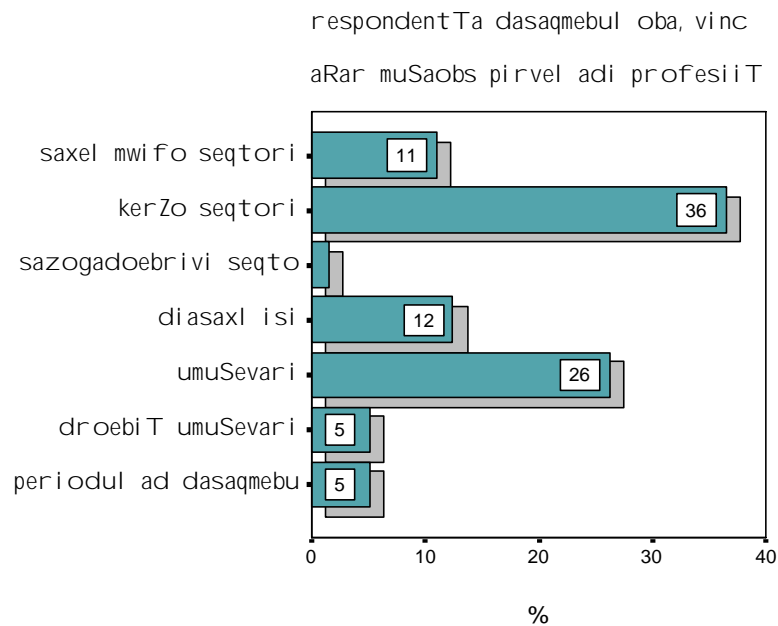
kvlevis amocanas warmoadgenda dagvedgina is mizezebi, romlebic ganapirobednen profesiiT samsaxuris arqonas an profesiiT samsaxurisaTvis Tavis danebebas. rogorc monacemebidan irkveva, maT Soris vinc muSaobda pirvel adi profesiiT da aRar muSaobs mizezebi ase nawil deba: im sferos gauqmeba regionSi, romel sac akmayofil ebda Cemi profesia 37.2%, Semicireba – 14.6%, samsaxuris specifikam moiTxova ufro maRal i kvalifikacia – 0.7% (1 SemTxveva), dabal i anazRaureba 9.5% - piradi mizezebi - 27.7%.

diagrama 17



aRsanisnavia, rom im respondentebidan, romlebic muSaobden pirveladi profesiiT, magram amJamad aRar muSaoben umetesoba 79.8% saxel mwifo seqtorSi iyo dakavebuli, 3.6% ki iyo kerZo seqtorSi dakavebuli, xolo 1.5% sazogadoebriv organizaciaSi. diagramaze # (17) mocemulia im respondentTa dasaqmebuloba, vinc aRar muSaobs pirveladi profesiiT.

diagrama 18



rogorc diagramidan cans, general ur erTobl iobaSi diagrama # (4) sakmao gansxvavebaa saxel mwifo seqtorsi dasaqmebul ebs Soris, Tu general ur erTobl iobaSi saxel mwifo seqtorsi dakavebul Ta procentul i maCvenebel i 25%-ia am SemTxvevaSi es maCvenebel i mxol od 10.9%-is tol ia.

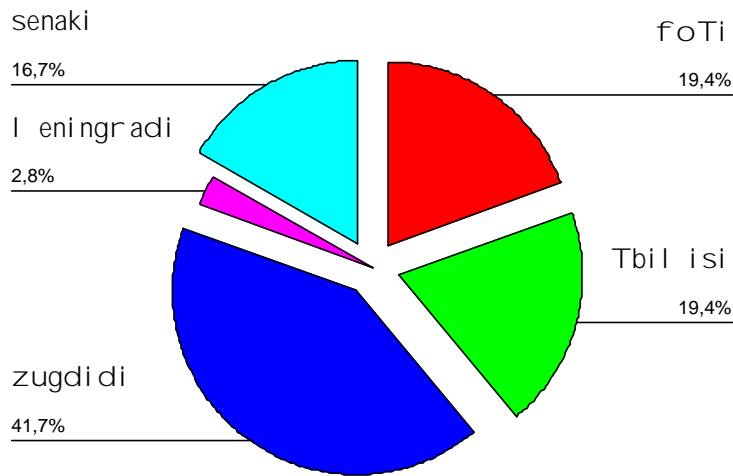
kvl evis erT-erTi amocana iyo dagvedgina Tu sad da rod is miiRes profesia respondentebma. rogorc kvl evam aCvena gamok iTxul respondentTa Soris 89,29% - profesia miRebul i aqvs saxel mwifo saswavl ebel Si, xol o 8.4%-s kerZo saswavl ebel Si. aRsaniSvavia, rom kerZo saswavl ebl ebis geografiul i areal i gansxvavebul ia saxel mwifo saswavl ebl ebis areal isagan. Tu kerZo saswavl ebl ebi mxol od 5 geografiul ares moicavs, saxel mwifo saswavl ebl ebis SemTxvevaSi dasaxel ebul ia 40 geografiul i wertil i, Tumca unda aRiniSnos, rom saxel mwifo saswavl ebel Si profesia miRebul Ta raodenobac daaxl oebiT 10-j er aRemateba kerZo saswavl ebel Si profesiamiRebul Ta raodenobas. cxril ebSi mocemul ia kerZo saswavl ebel Si profesia miRebul Ta raodenoba da %-l i ganawil eba.

| saswavl ebl is dasaxel eba | raodenoba | % |
|---|-----------|------|
| pasuxi ar aris | 8 | 22,2 |
| teqniki | 6 | 16,7 |
| zugdidis damouki debel i universiteti | 5 | 13,9 |
| soxumis i.vekuas sax. saswavl ebel i | 2 | 5,6 |
| sayofacxovrebo saxl i | 1 | 2,8 |
| puSkinis saxel obis instituti | 1 | 2,8 |
| foTis damouk. instituti | 3 | 8,3 |
| soxumis humanitarul i instituti | 2 | 5,6 |
| Cinuri medicinis akademia | 1 | 2,8 |
| universiteti "iberia" | 1 | 2,8 |
| saq.humanitarul i instituti | 2 | 5,6 |
| a.koWoxiZis akademia | 1 | 2,8 |
| caavas saxel obis instituti | 1 | 2,8 |
| gr.robaqiZis sax.univer. "al ma-materi" | 1 | 2,8 |
| senakis humanitarul -ekonomik. inst. | 1 | 2,8 |

cxril i # 8

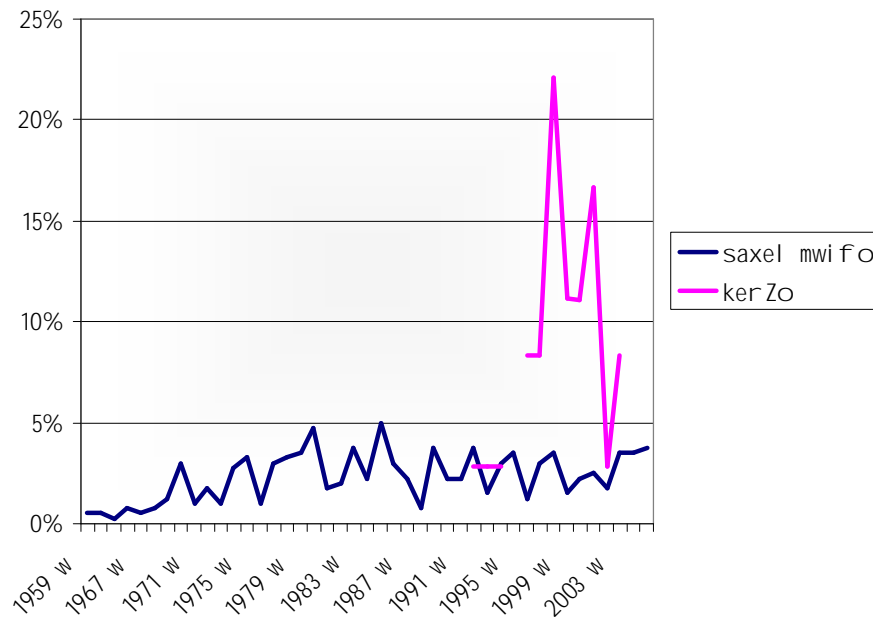
diagrama 19

kerZo saswavl ebl ebis
geografiul i areal i



diagramaze # (19) mocemul ia kerZo saswavl ebl ebis adgil mdebareobebis ganawil eba. diagramaze # (18) mocemul ia kerZo da saxel mwifo saswavl ebl ebis profesiis miRebis wl ebis sqematuri Sedareba. rogorc diagramaze Cans kerZo saswavl ebl ebSi profesiis miRebis wl ebi kerZo saswavl ebl ebis SemTxvevaSi iwyeba 1992 wl idan, rodesac saqarTvel oSi pirvel ad gaxsna ganaTI ebis miRebis kerZo seqtori.

diagrama 20

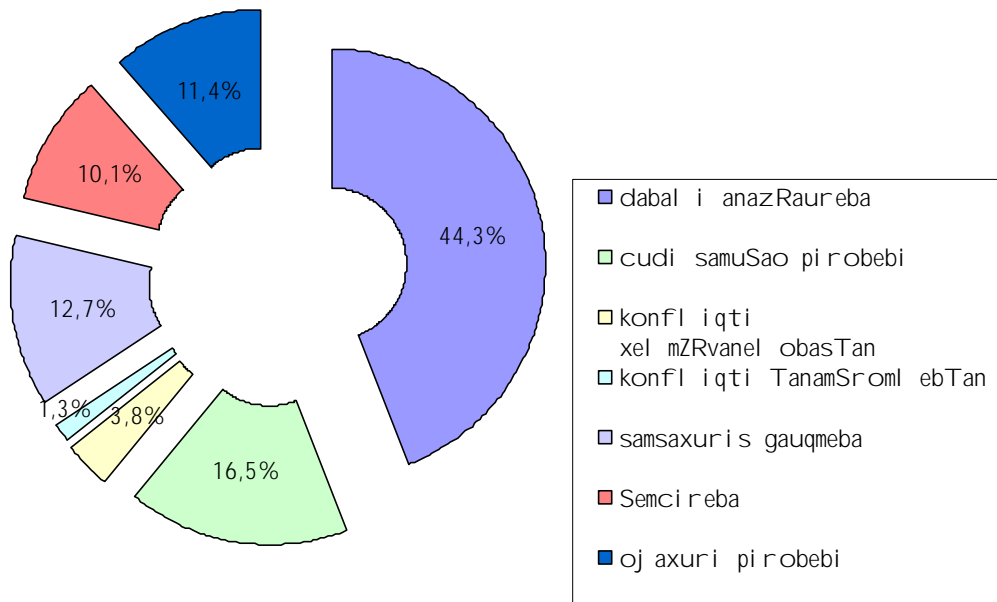


Tavi 6 samuSao adgil is cvl il ebis mizezebi

kvil evis Sedegebidan gamomdinare respondentTa samuSao adgil is cvl il ebis mizezebi iyo: dabal i anazRaureba 44.3%, cudi samuSao pirobebi – 16.5%, samsaxuris gauqmeba - 12.7%, Sencireba – 10.1%, oj axuri pirobebi 11.4%. xol o konfliqti xel mZRvanel obasTan da TanamSroml ebTan Sesabamisad 3.8% da 1.3%.

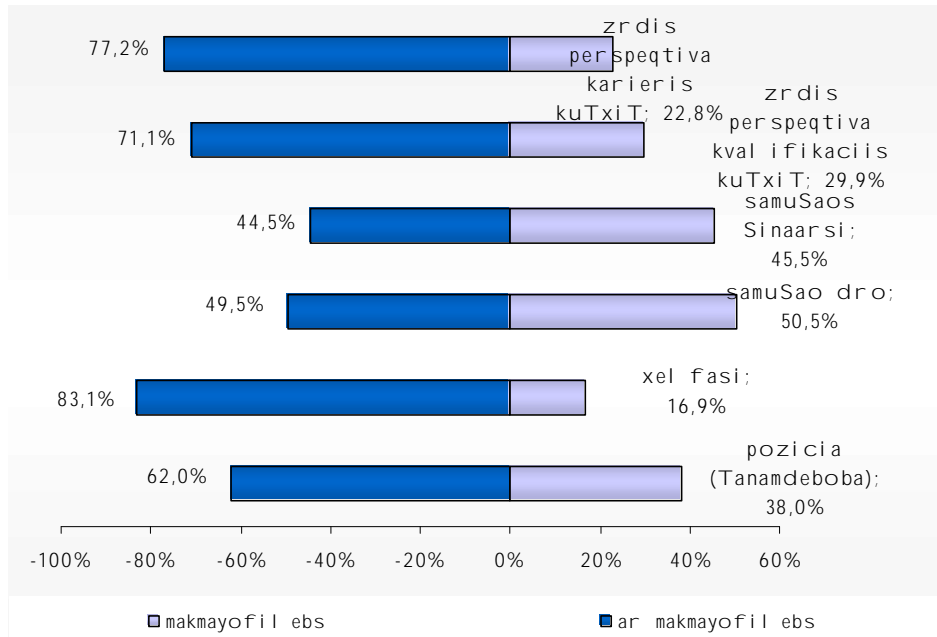
diagrama 21

samsaxuris cvl il ebis mizezebi



kiTxvaze gakmayofil ebT Tu ara Tqveni an Tqveni oj axis wevris amJamindel i samuSao adgil i pasuxebi ase ganawil da:

diagrama 22

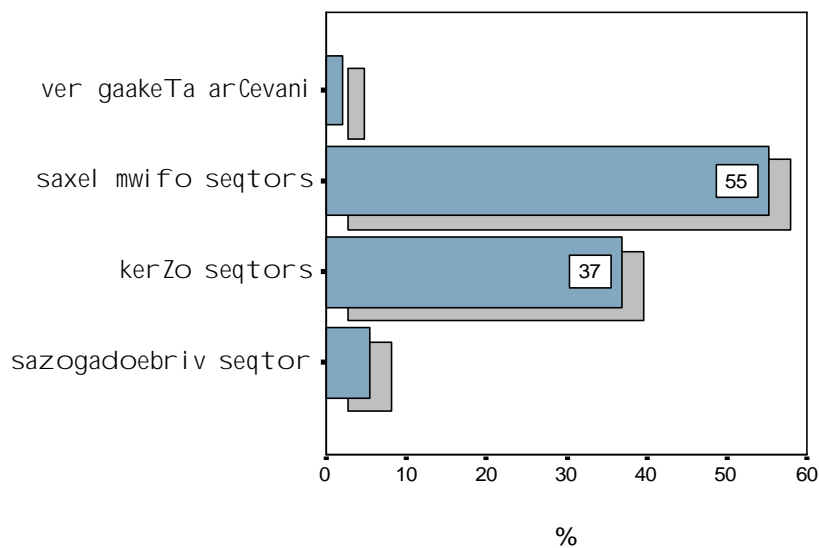


garda samuSao pirobebis Sefasebisa kvl eva iTval iswinebda dagvedgina dasaqmehis romel sferos airCevdnen respondentebi Tu amis SesaZl ebl oba miecemodaT, gamokitxul Ta 55,2%-ma saxel mwifo seqtors mi aniWa upiratesoba, 36,9% kerZo seqtors, xolo 5,5% sazogadoebriv seqtors. 2,4%-ki arCevani ver gaakeTa diagrama # (23).

diagrama 23

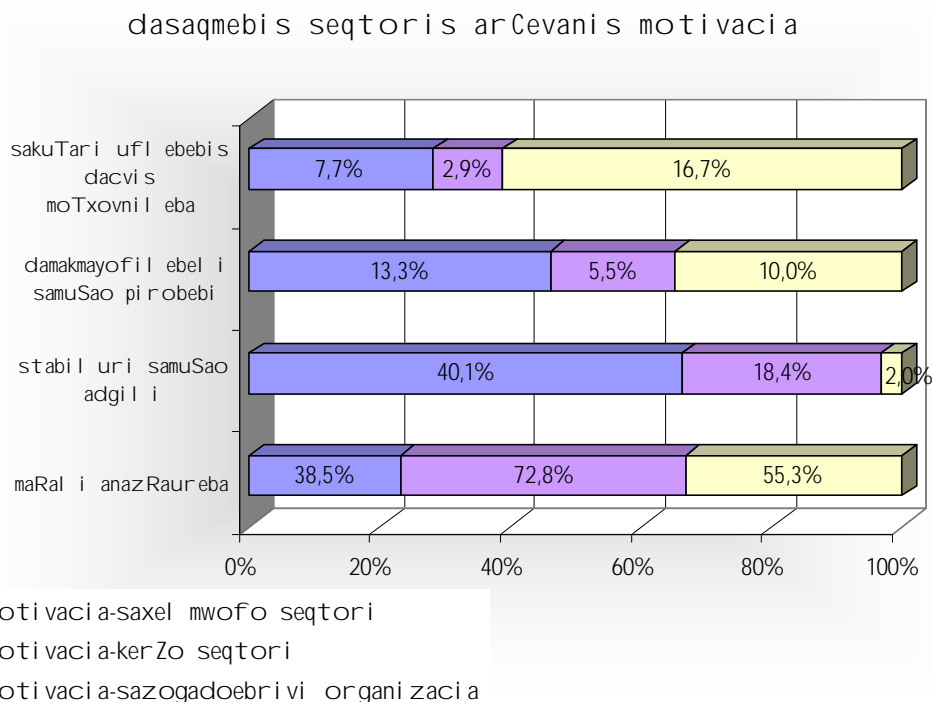
dasaqmehis sferos arCevani s

SesaZl ebl oba



unda aRini Snos, rom im respondentagan vinc saxel mwifo seqtorSi samsaxurs mi aniWa upiratesoba 38.5% maRal i anazRaurebis motiviT axsna, 40.1% SemTxvevaSi stabil uri samuSao adgili s motivaci iT, 13.3% SemTxvevaSi – damakmayofil ebel i samuSao pirobebiT, xol o 7.7% SemTxvevaSi sakuTari ufl ebebis dacvis moTxovnil ebiT. im respondentagan, vinc kerZo seqtorze gaakeTa arCevani 72.8% SemTxvevaSi maRal i anazRaurebaa misi motivacia, 18.4%-Si stabil uri samuSao adgili, 5.5%-Si damakmayofil ebel i samuSao pirobebi, xol o 2.9% SemTxvevaSi sakuTari ufl ebebis dacvis moTxovnil eba. sazogadoebrivi seqtoris arCevanis SemTxvevaSi ki pasuxebi ase ganawil da 55.3% maRal i anazRaureba, 20% - stabil uri samuSao adgili, 10% – damakmayofil ebel i samuSao pirobebi, xol o 16.7% - sakuTari ufl ebebis dacvis moTxovnil eba. ix. diagrama #(24).

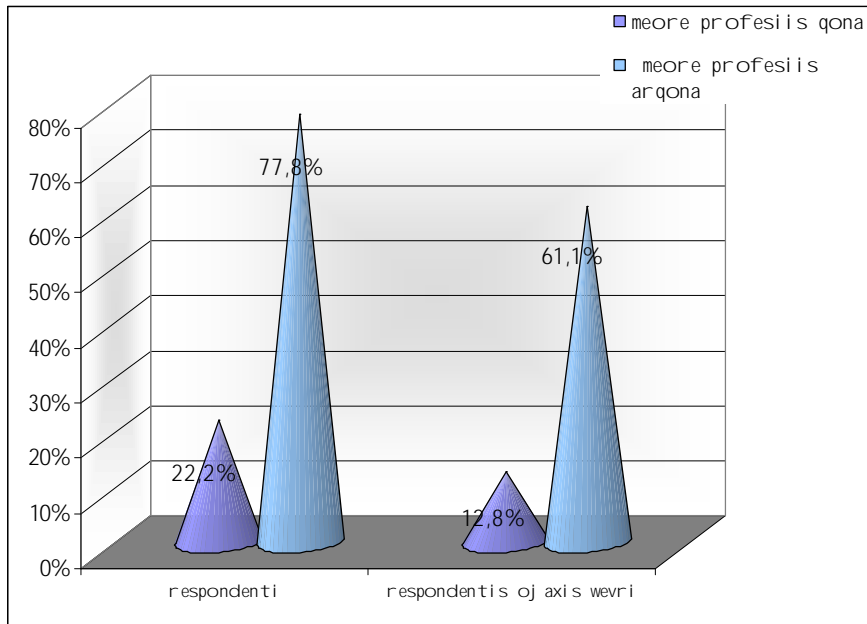
diagrama 24



Tavi 7 meoradi profesia

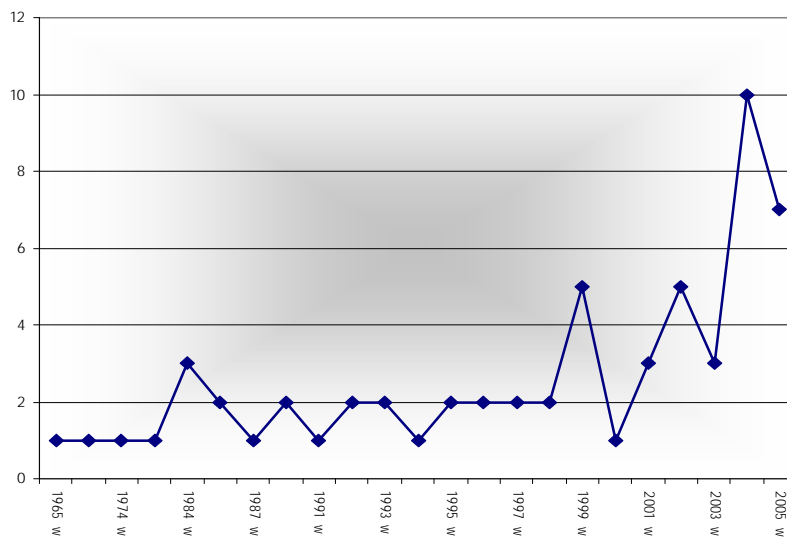
kvl evis erT-erTi sakiTxi iyo dagvedgina garda ZiriTadi profesiisa aqvT Tu ara respondentebis meore profesia, roml iTac SeZl ebdnen muSaobas. gamokiTxul Ta 22,2% aqvs meore profesia, xol o 77.8% meore profesia ar gaaCnia. aseve vekiTxebodiT aqvT Tu ara maTi oj axis wevrebs meore profesia. rogorc kvl evam aCvena gamokiTxul respondentTa mxol od 12,8%-ma aRniSna rom maTi oj axis wevrebs aqvs meore profesia, 61,1%-ma aRniSna, rom maTi oj axis wevrebs meore profesia ar aqvT, xol o 26,1%-ma kiTxvaze pasuxisgan Tavi Seikava.

diagrama 25



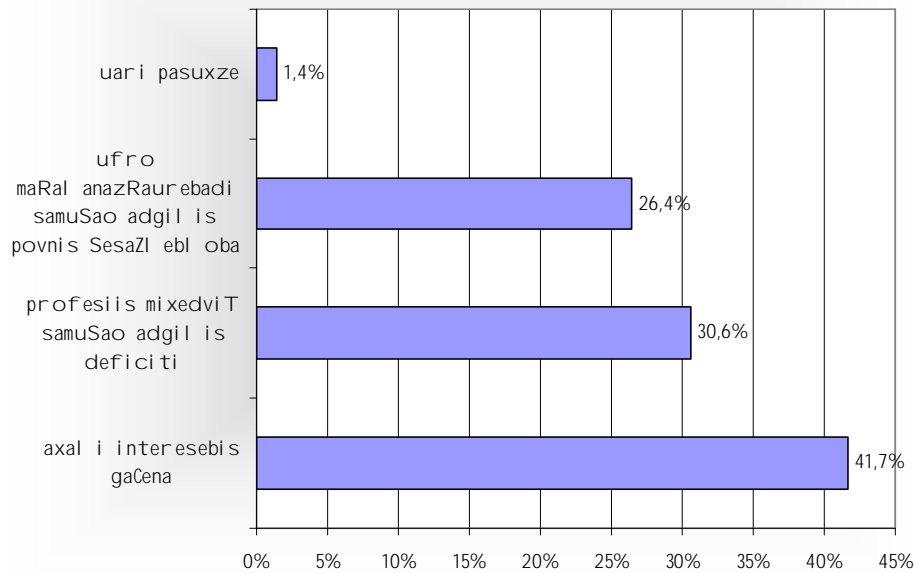
Arسانی Svavia, rom respondentTa im erTobl iobidan visac aqvs meore profesia 52.9% muSaobs meore profesiiT, xol o im respondentTa oj axis wevrebidan visac aseve aqvs meore profesia aseve dasaqmebul ia meore profesiiT. cxril Si # (9) mocemul ia respondentTa pirvel adi da meore profesiebis ganawil eba. anu romel i pirvel adi profesii s respondents aqvs romel i meoradi profesia, roml iTac SeuZl iaT muSaoba. Seswavl il i iqna aseve meoradi profesiebis miRebis dro. diagramaze #26 mocemul ia Tu romel wl ebSi aqvT respondenteb s miRebul i meoradi profesia.

diagrama 26



rogorc diagramidan Cans respondentebis mier meoradi profesia umetesad 1995 wl is Semdeg aqvT miRebul i. aseve gamokvl eul i iqna Tu ra iyo meoradi profesiebis miRebis mizezi. rogorc kvl evam aCvena, 41.7%-Tvis meore profesiebis SeZena axal i interesebis gaCenasTan iyo dakavSirebul i, 30.6%-Tvis profesiebis mixedviT samuSao adgil is defici ti, 26.4%-Tvis sxva profesiebis saSual ebiT ufro maRal anazRaurebadi samuSaos povnis SesaZl ebl oba. diagrama # (27)

diagrama 27



| meoradi profesia | pi rvel adi profesia | | | | | | | | | | | | | | | | | | | | | | | | | | | | |
|---------------------------|----------------------|------------|----------|----------|-------|----------|------------|--------------------|---------|------------|-----------|----------|-------------------------|-----------|---------------------|------------|------------|------------|---------|--------------------|---------------|------------|-----------|------------|-------------|----------|-------------------|----------|---|
| | eqTani | ekonomisti | inJineri | filologi | eqimi | pedagogi | istorikosi | manqanaTinSenebl i | iuristi | buRal teri | teqnologi | biol oqi | farmaceuti (l aboranti) | mezRvauri | meliorati, agronomi | sportsmeni | dipl omati | mwvrTnel i | mZRol i | inJiner-ekonomisti | el .teqnikosi | mSenebel i | xel osani | meqanikosi | pol iciei i | mdi vani | xel ovnebaTinodne | mexanZre | |
| pedagogi | 2 | 1 | | 1 | 1 | | | 1 | | | 3 | | | | | | | | | | | | | | | | | | |
| kompiteris special isti | | 2 | | | | | | | | | | | | | | | | | | | | | | | | | | | |
| mdivan-memanqane | | | | | | 1 | | | | | | | | | 2 | | | | | | | | | | | | | | |
| mkeravi | | | | | | | | | 1 | 1 | | | | | | | | | | | | | | | | | | | |
| ekonomisti | | | | | | | 1 | 2 | | 1 | | | | | | | | | | | 1 | | | | | | | | |
| mwonav - gamyidveli | | 2 | | | | | | | | | | | | | | | | | | | | | | | | | | | |
| tvirtis mi mRebi ,gadamz. | | | | | | | | 1 | | | | | | | | | | | | | | | | | | | | | |
| kavSirgabmul obis ostati | | | | 1 | | | | | | | | | | | | | | | | | | | | | | | | | |
| fexsacml is SemkeTebeli | | | | | | | | | | 2 | | | | | | | | | | | | | | | | | | | |
| meTevze, mezRvauri | | | | | | | | | | | | | | | | | | | 1 | | | | 1 | | | | | | |
| sawyobis game | | | | | | | | | | | | | | | | | | | 2 | | | 1 | | | | | | | |
| Jurnalisti, fotografi | | 2 | 1 | 1 | | | | | | | | | | | | | | | | | | | | | | | | | |
| xelosani | | 1 | 1 | | | | | | 1 | | | | | | 1 | | | | | | | | | | | | | | 1 |
| vaWari | 1 | | 1 | | 1 | 2 | | 1 | 3 | 3 | 1 | | | 3 | 2 | | | | | | | | | | | | 1 | | |

meoradi profesiis miRebis areal i ki viwrovdeba da mxol od saqarTvel oTi Semoifargl eba. meoradi profesiis miRebis adgil mdebareobaa: foTi, Tbilisi, zugdidi, senaki, quTaisi, soxumi.

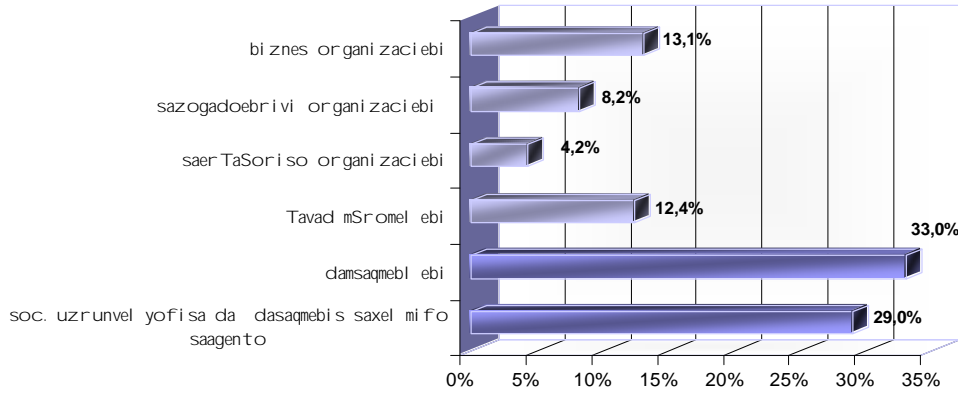
Tavi 8 kvalifikaciis miRebis Sesazl ebl obebis Sefaseba.

kvl evis amocanas warmoadgenda dagvedgina Tu rogor afasebs samegrel os oTxi qal aqis (zugdidi, senaki, foTi, xobis) mosaxl eoba regionSi samuSao Zal is profesiul unar-Cvevebs. maTi azrit ramdenad akmayofil eben isini regionSi arsebul moTxovnebs. rogorc kvl evam cxadyo gamokitxul respondentTa 14.1% Tvl is, rom profesiul i unar-Cvevebi, roml ebic regionis mosaxl eobas aqvs, srul iad akmayofil ebs moTxovnebs, gamokitxul Ta 67.3% - Tvl is rom unar-Cvevebis es done met-nakl ebad akmayofil ebs moTxovnebs, xol o 17.1%-is azrit – ar akmayofil ebs. miuxedavad imisa, rom umetesoba 67.3% Tvl is, rom regionis mosaxl eobis unar-Cvevebi moTxovnebtan met-nakl ebad Sesabamisia. gamokitxul Ta 65.7% miicnevs, rom kvalifikaciis done, romel sac iRebs adamiani profesiis SeZenis procesSi ar aris sakmarisi Tanamedrove moTxovnebis dasakmayofil ebl ad, gamokitxul Ta 33.6%-s ki kvalifikaciis es done sakmarisad miacnia. imisaTvis rom regionSi gairados muSakTa kvalifikaciis xarisxi, respondentTa 67,3%-is azrit unda amaRI des profesiis miRebis adgil ebSi swavl ebis xarisxi, 49.5%-is azrit saWiroa arsebobdes periodul i kvalifikaciis amaRI ebis kursebi, roml ebic daexmareba momuSaves daakmayofil os Tanamedrove moTxovnebi, gamokitxul Ta mxol od 4.2% Tvl is rom saWiroa periodul i atestaciebi, raTa Semowmdes muSakTa kvalifikacia da samuSaos moTxovnebtan Sesabamisoba. respondentTa umravl esoba 87% Tvl is, rom kvalifikaciis amaRI ebis kursebi unda iyos ufaso, xol o 11,7%-is azrit kvalifikaciis amaRI ebis kursebi unda iyos fasiani. aRsaniSnavia, rom im respondentebisagan, visi azritac kvalifikaciis kursebi fasiani unda iyos 72,6% dasaqmebul ia. diagramaze #(28) mocemul ia respondentTa ganawil eba kiTxvaze Tu vin unda zrnavdes dasaqmebul Ta kvalifikaciis amaRI ebaze regionSi. rogorc diagramidan Cans yvel aze meti respondenti Tvl is, rom regionSi dasaqmebul Ta kvalifikaciis amaRI ebaze unda izrunon – damsaqmebl ebma da social uri dacvisa da dasaqmebis saxel mwifo saagentom, Sesabamisad – 33% da 29%. respondentTa 55,6% miicnevs, rom regionSi axal i profesiis SeZena met-nakl ebad xel misawvdomia, 24,2% Tvl is rom axal i profesiis SeZena ar aris xel misawvdomi, xol o 19,1% Tvl is, rom regionSi axal i profesiis SeZena xel misawvdomia, xol o kiTxvaze unda gairados Tu ara axal i profesiis miRebis Sesazl ebl obebi

pasuxebi ase ganawil da ki unda gairardos – 88,3%, ara ar aris saWiro – 11,7%.

diagrama 28

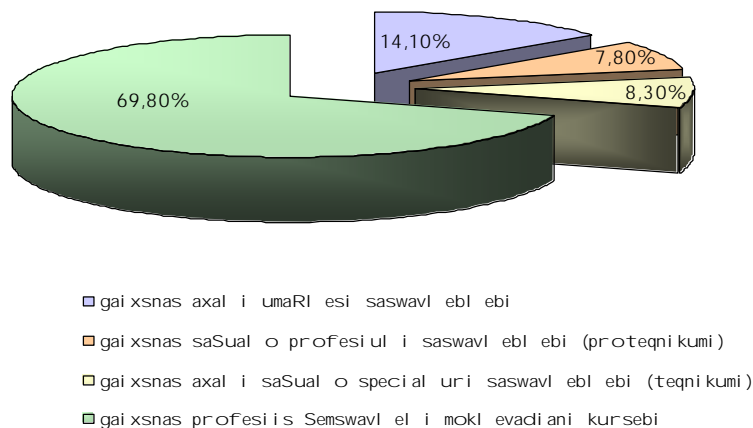
vin unda zrunavdes dasaqmebul Ta kvalifikaciaze



respondentTa azri regionSi axali profesiis miRebis gzebis Sesaxeb ase ganawil da: gairxsnas axali umaRlesi saswavl ebl ebi 14,1%, gairxsnas saSualo profesiuli saswavl ebl ebi (proteqniki) 7,8%, gairxsnas axali saSualo specialuri saswavl ebl ebi (teqniki) 8,5%, gairxsnas profesiis Semswavleli mokl evadiani kursebi – 69,8%.

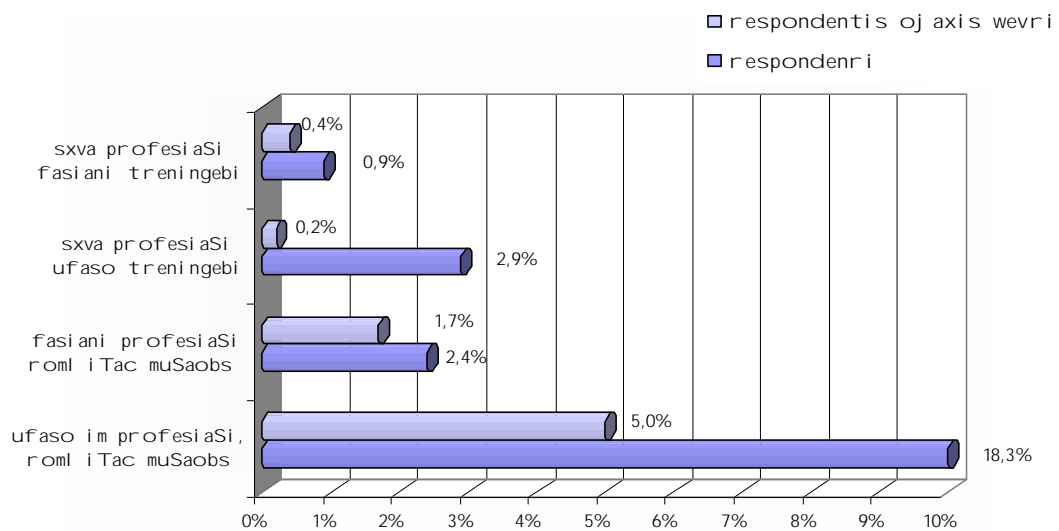
diagrama 29

ra gzebi unda moixanos regionSi axali profesiis mi saRebad



kvl eva iTval iswinebda dagvedgina gauvl iaT Tu ara respondenteb s raime saxis sakval ifikacio kursebi an treningebi, ra saxis iyo es kursebi fasi ani Tu ufaso da igive profesiaSi iyo Tu sxva profesiaSi. diagramaze #(30) mocemul ia respondentTa pasuxebis ganawil eba, gauvl iaT Tu ara sakval ifikacio kursebi respondenteb s an maTi oj axis wevreb s.

diagrama 30



rogorc diagramidan Cans respondentTa 18,3%- gavli i i aqvT ufaso treningebi im profesiaSi, roml iTac muSaoben, respondentTa am nawil is profesiebi ki ase nawil deba cxril i #(10).

| profesi ebi | respondentTa raodenoba | procenti |
|------------------|------------------------|----------|
| medda | 7 | 7% |
| ekonomisti | 19 | 19% |
| stomatologi | 1 | 1% |
| injineri | 3 | 3% |
| filologi | 3 | 3% |
| eqimi | 7 | 7% |
| pedagogi | 22 | 22% |
| istorikosi | 1 | 1% |
| manqanaTmSenebli | 1 | 1% |
| msaxiobi | 1 | 1% |
| iuristi | 9 | 9% |
| buRal teri | 4 | 4% |
| teqnologi | 2 | 2% |
| Tarj imani | 2 | 2% |
| biologi | 4 | 4% |
| farmacevti | 3 | 3% |
| mezRvauri | 2 | 2% |
| agronomi | 3 | 3% |
| dipl omati | 2 | 2% |
| mkeravi | 1 | 1% |
| mZRoli | 1 | 1% |
| el .teqnikosi | 1 | 1% |
| mSenebel i | 1 | 1% |
| meqanikosi | 1 | 1% |

cxrili # 10

aseve gamokvl eul iqna kval ifikaciis miRebis adgil ebi. cxrili Si # (11) mocemul ia ufaso treningebis gavl is adgil ebi im profesiaSi, romli Tac muSaoben respondentebi.

| kval ifikaciis/treningis kursebis gavl is adgil ebi | raodenoba | procenti |
|---|-----------|----------|
| S.s.s saministro | 2 | 2,40% |
| zugdis daxel ovnebis instituti | 1 | 1,20% |
| quTaisis daxel ov.inst. | 2 | 1,20% |
| arasamT.org."sameg.media" | 1 | 1,20% |
| Tbil isis daxel ovnebis instituti | 1 | 1,20% |
| germanul -qarTuli saxli | 12 | 14,50% |
| asociacia "gaenaTi" | 1 | 1,20% |

| | | |
|--|------------------|-------|
| savaWro pal ata | 1 | 1,20% |
| foTis j anmrTel obis ganyofil eba | 2 | 2,40% |
| germaniis savaWro saxli | 1 | 1,20% |
| "Ria sazogadoeba saqarTvel o" | 2 | 2,40% |
| goeTes instituti | 3 | 3,60% |
| advokatTa kol egia | 2 | 2,40% |
| dul evis faifuris qarxana | 3 | 3,60% |
| ndobis kavSiri | 2 | 2,40% |
| Tbil isis saxel mwifo universiteti | 1 | 1,20% |
| USAID | 1 | 1,20% |
| kul turis saministro | 1 | 1,20% |
| "horizonti" | 1 | 1,20% |
| kavSirgabmul obis saministro | 4 | 4,80% |
| j andacvis saministro | 1 | 1,20% |
| arasamTavrobo organizacia | 3 | 2,40% |
| "aTinaTi" | 1 | 1,20% |
| iusticiis saministro | 4 | 4,80% |
| inval . bavSvTa da inval id bavSvTa dedaTa asoc. | 1 | 1,20% |
| saarCevno komisia | 1 | 1,20% |
| Tbil isi saxel mwifo moxel eTa gadamzadebis centri | 2 | 2,40% |
| kompiuteris kursebi | 1 | 1,20% |
| safondo birJa | 6 | 7,20% |
| memanqanis kursebi | 1 | 1,20% |
| konfliqtebis dareg.treningi | 1 | 1,20% |
| BAF | 2 | 2,40% |
| daniis ltolvilTa sabWo | 2 | 2,40% |
| "gorbi" | 1 | 1,20% |
| eqimTa daxel ovnebis inst. | 3 | 1,20% |
| ganaTlebis da mec.saministro. | 2 | 2,40% |
| afxazeTi | 1 | 1,20% |
| profkavSiri | 2 | 2,40% |
| GTZ | 1 | 1,20% |
| sul : | 82 ¹¹ | |

cxrili # 11

cxrili # (12) mocemulia is organizaciebi, sadac respondentebma gaires fasiანი treningebi/kvalifikaciis amari ebis kursebi.

¹¹ danarCeni 18 respondenti, vinc gaiara ufaso treningebi ver asaxel ebs treningis gavlis adgils.

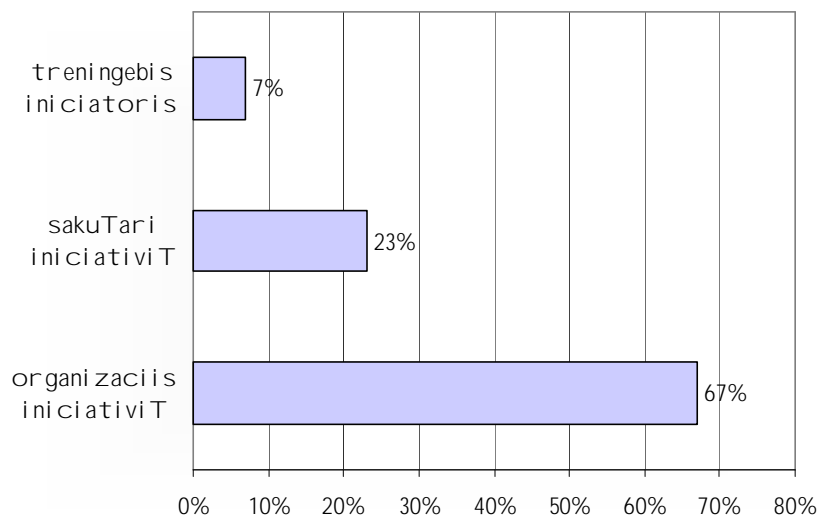
| | |
|---------------------------------|---|
| Tbilisi daxel ovnebis instituti | 4 |
| germanul -qartuli saxli | 1 |
| axali teqnologiების instituti | 1 |
| "aTinaTi" | 1 |
| erovnuli banki | 1 |
| saarCevno komisia | 1 |
| BAF | 1 |
| iusticiis saministro | 1 |
| kompiuteris kursebi | 1 |

cxrili # 12

im respondentTa treningebis Sefaseba, romel Tac gaires ufaso treningebi umravles SemTxvevaSi 91% - Zalian sasargebloa. im respondentTa Sefaseba, romel Tac gaires fasiანი treningebi 69.2% Zalian sasargebloa, xolo 30,8% Tvlis, rom met-naklebad sasargeblo.

kvlevam acvena, rom 67%-ma respondentebisa ufaso treningebi gaires im organizaciis iniciativiT, sadac msaxuroben, 23%-ma gaiara sakuTari iniciativiT, xolo 7%-ma treningebis organizatoris iniciativiT.

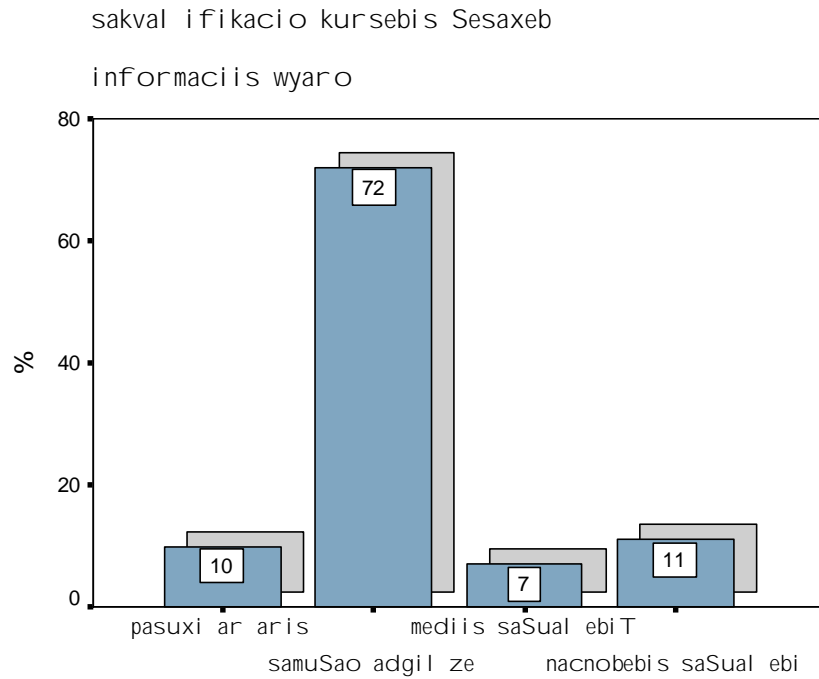
diagrama 31



diagramaze #32 mocemulia im respondentTa pasuxebis ganawileba kiTxvaze Tu saidan gaiges sakvalifikacio kursebis Sesaxeb informacia. sakvalifikacio kursebis gavlis Semdeg respondentTa 73%-ma, romel Tac gaires ufaso treningebi miRebuli aqvT Sesabamisi serTifikati, aseve respondentTa 84.6%, romel Tac

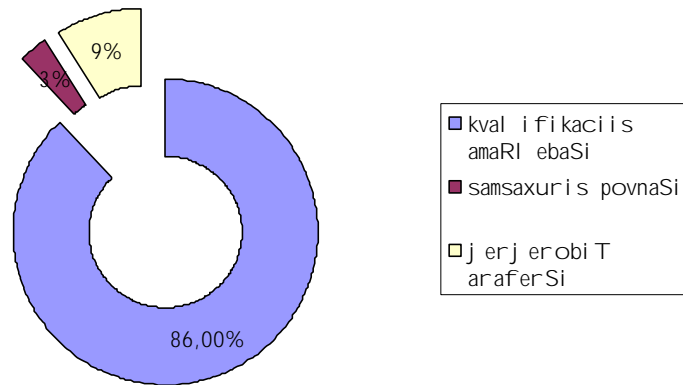
გავლილი აქვთ ფასიანი ტრენინგები მიზნის მიხედვით შესაბამისი სერტიფიკატი.

დიაგრამა 32



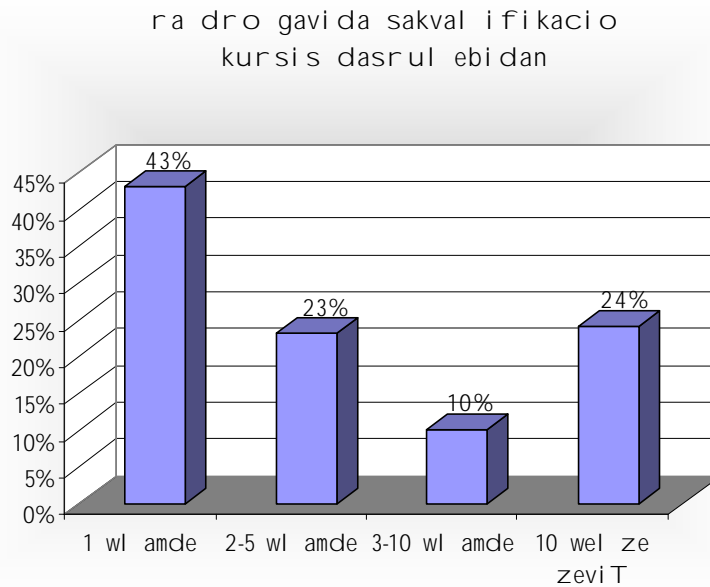
კითხვებზე თურასი დახმარება ტრენინგებზე მოსმენილი ინფორმაცია პასუხების განაწილება მოცემულია დიაგრამაზე # (33)

დიაგრამა 33



aseve dasmul i iyo SekiTxa Tu ra dro gavida sakvalifikacio kursebis/treningebis gavli s Semdeg. rogorc monacemebidan gairkva 43% SemTxvevaSi sakvalifikacio kursis dasrul ebidan gasulia 1 wl amde, 23% SemTxvevaSi 2-5wl amde, 10% SemTxvevaSi 3-10 wl amde, xolo 24% SemTxvevaSi 10 wel ze meti diagrama # (34).

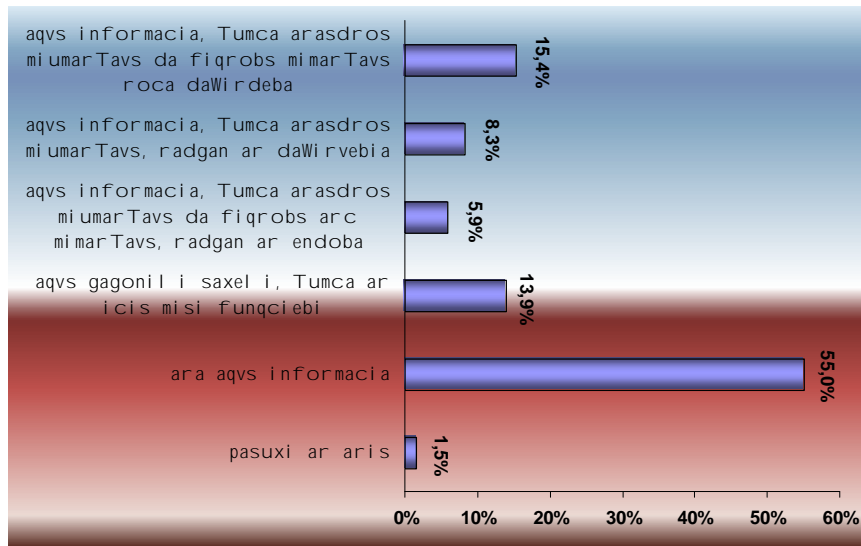
diagrama 34



Tavi 9 informacia social uri dacvisa da dasaqmebis saxel mwifo saagentos Sesaxeb.

kvlevis erT-erT amocanas warmoadgenda dagvedgina aqvs Tu ara mosaxleobas socialuri dacvisa da dasaqmebis saxel mwifo saagentos Sesaxeb informacia. rogorc Sedegebidan gairkva gamokitxul Ta 55%-s ara aqvs informacia, aqvs gagonili saxeli, Tumca aricis misi funqciebi 13,90%, aqvs informacia, Tumca arasdros miumarTavs da fiqrobs arc mimarTavs, radgan ar endoba - 5,90%, aqvs informacia, Tumca arasdros miumarTavs, radgan ar daWirvebia 8,30%, aqvs informacia, Tumca arasdros miumarTavs da fiqrobs mimarTavs roca daWirdeba 15,40%. diagrama # (35).

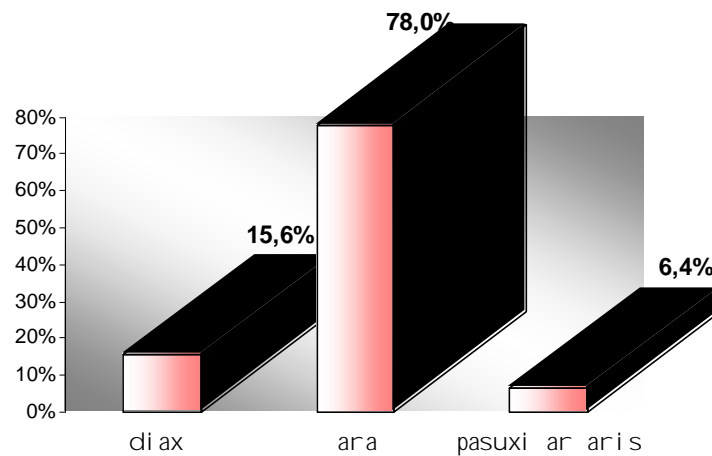
diagrama 35



maT Soris visac aqvs raime saxis informacia social uri dacvisa da dasaqmebis saxel mwifo saagentos Sesaxeb 15,6%-ma aRniSna, rom maTi nacnobi daregistrirebul ia social uri dacvisa da dasaqmebis saxel mwifo saagentoSi, rac respondentTa saerTo raodenobis 8,8%-s Seadgens. ix. diagrama # (36).

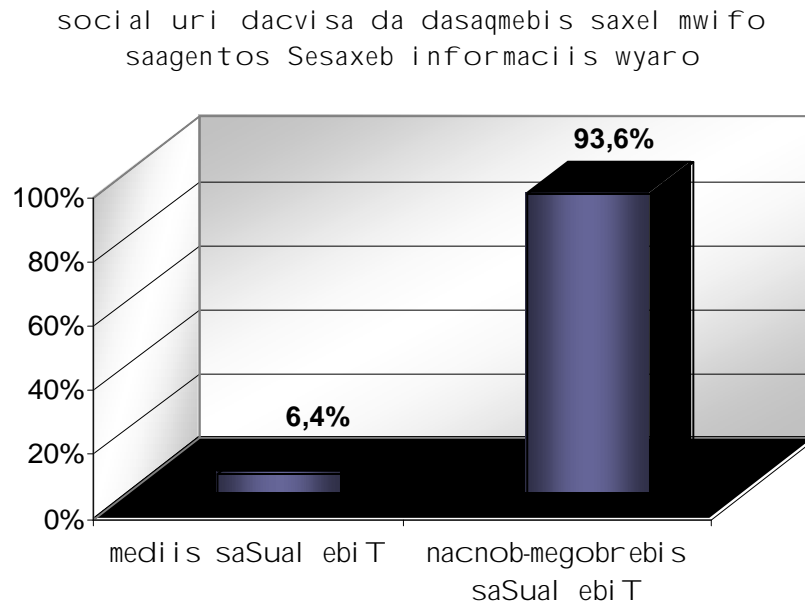
diagrama 36

Tqven an Tqveni nacnobi daregistrirebul i xarT/aris Tu ara social uri dacvisa da dasaqmebis saxel mwifo saagentoSi



kiTxvaze Tu saidan miiRes informacia respondentebma social uri dacvisa da dasaqmehis saxel mwifo saagentos Sesaxeb pasuxehis ganawil eba mocemul ia diagramaze # (37).

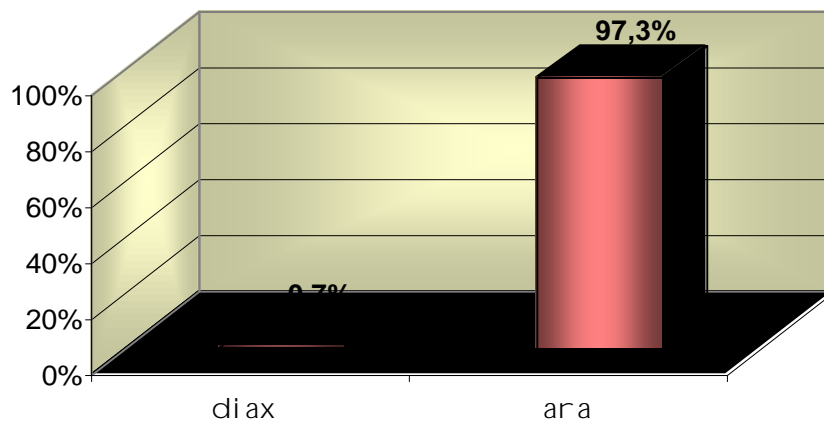
diagrama 37



gamokiTxul Ta 2.6% - 14 respondentma upasuxa, rom is/misi nacnobi iRebs umuSevris Semweobas, xol o 4-ma 0.7% respondentebisa mi uTiTa, rom mas samuSao aqvs dawyebul i social uri dacvisa da dasaqmehis saxel mwifo saagentos saSual ebi T. diagrama # (38).

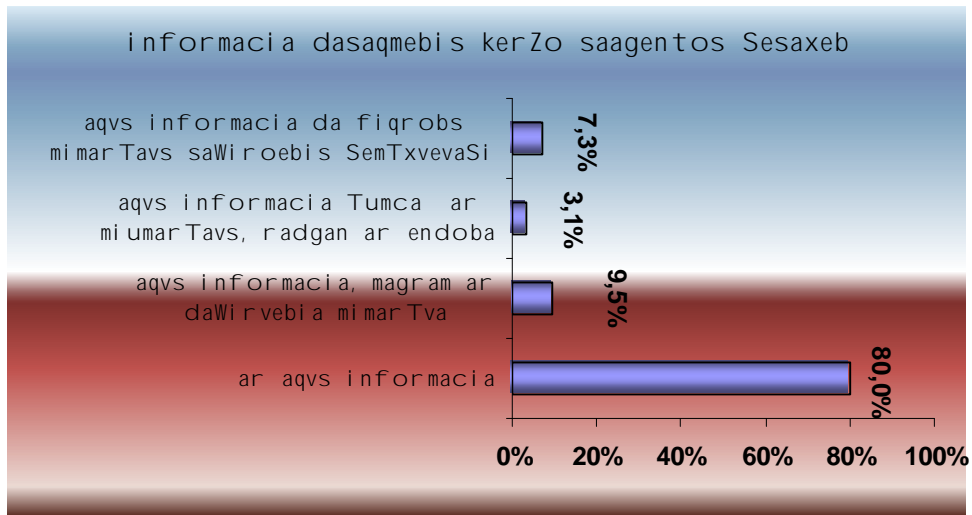
diagrama 38

miiReT Tu ara samuSao social uri dacvisa da dasaqmehis saxel mwifo saagentos saSual ebi T



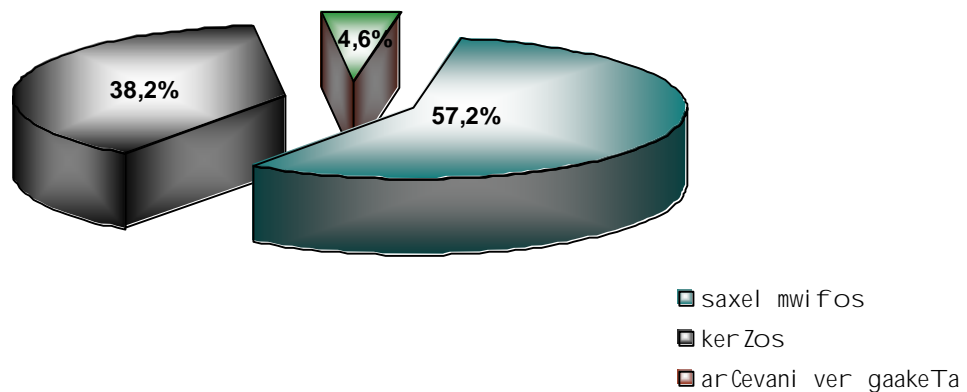
aseve kvl evis interest Seadgenda aqvT Tu ara informacia respondentebis dasaqmebis kerZo saagentoebis Sesaxeb regionSi. pasuxebis ganawil eba mocemul ia diagramaze # (39).

diagrama 39



ki Txvaze saWi roebis SemTxvevaSi, romel saagentos mi marTavdi T kerZos Tu saxel mwifos. 57,2%-ma dasaqmebis saxel mwifo saagentos mi ani Wa upiratesoba, 38,2%-ma kerZos, xol o 4,6% ar Cevani ver gaakeTa diagrama # (40).

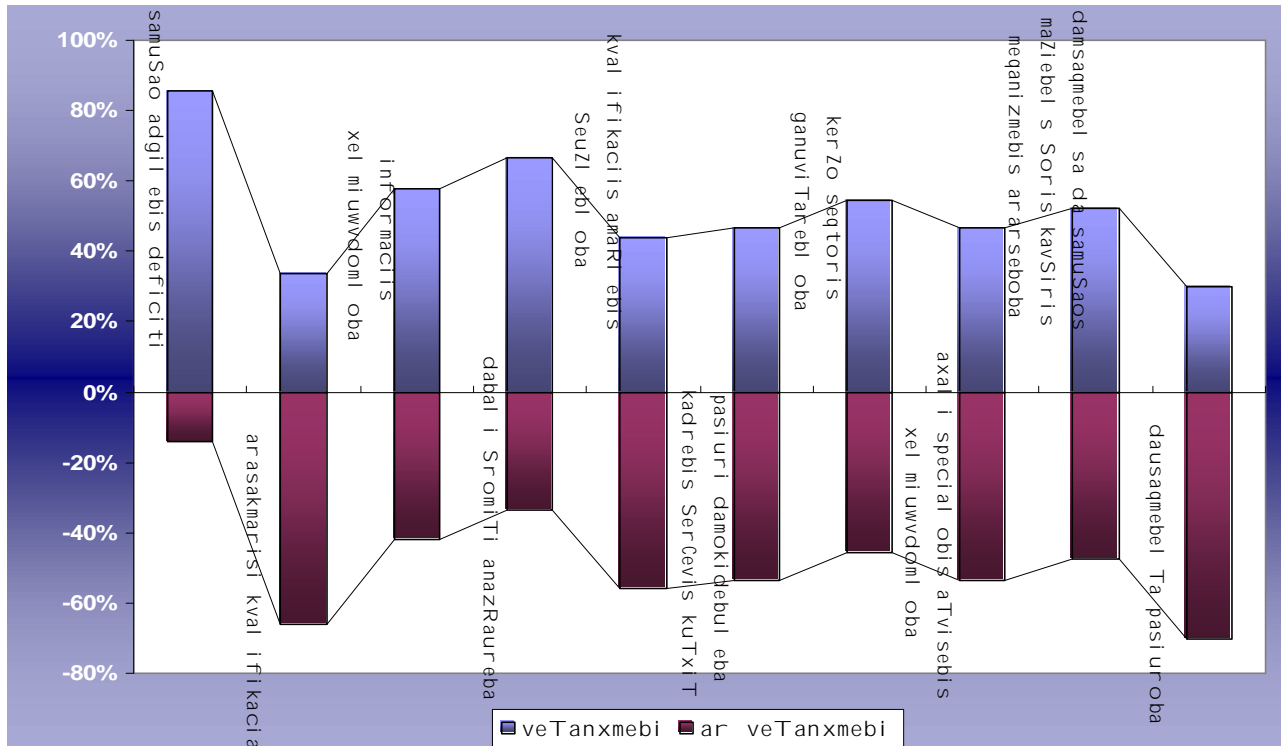
diagrama 40



Tavi 10 damokidebul eba umuSevrobis mizezebTan

kvlevis interest Seadgenda gagvego Tu ra damokidebul ebebi arsebobs regionSi im mizezebis mimarT, romel ebmac Sesazl ebel ia xel i SeuSal on adamians samuSao adgil is povnaSi. rogorc Sedegebidan irkveva, 85.7% respondentebisa Tvl is rom es mizezia zogadad regionSi samuSao adgil ebis deficiti. 33.8% Tvl is, rom – es mizezia samuSaos maZiebl ebis arasakmarisi kval ifikacia. 58% - is azrit - informaciis xel miuwdoml oba samuSao adgil ebis Sesaxeb. 66.4%-is azrit - dabali SromiTi anazRaureba, 43.9%-is azrit kval ifikaciis amaRl ebis SeuZl ebl oba, 46.6%-is azrit damsqaqmebel Ta pasiuri damokidebul eba kadrebis SerCevis kuTxiT, 54.4%-is azrit kerZo seqtoris ganuviTarebl oba regionSi, 46.6%-is azrit axali unarebis (special obis) aTvisebis xel miuwdoml oba, 52.3%-is azrit damsqaqmebel sa da samuSaos maZiebel s Soris kavSiris efeqturi meqanizmebis ararseboba, xolo dausqaqmebel Ta pasiurobaa – 29.8%-is azrit.

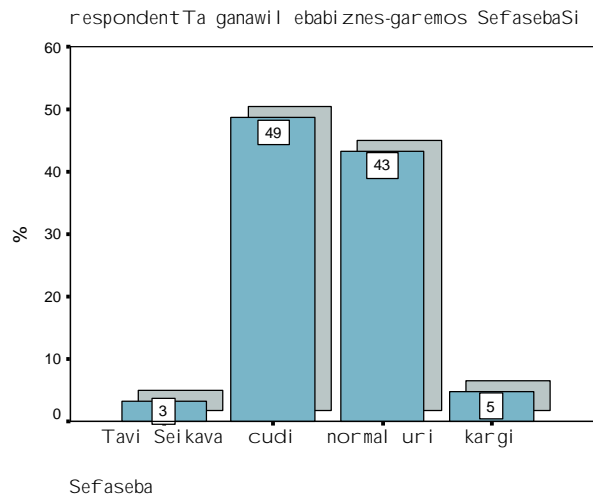
diagrama 41



Tavi 11 biznes garemo

kvlevis amocana iyo dagvegina respondentTa damokidebul eba regionSi biznes-garemos mimarT. Sedegebi dan gamodinare gamokiTxul Ta 48.6%-is azriT regionSi biznesis ganviTarebis mimarTul ebiT cudi pirobebia, 43.3%-is azriT normal uri, 3.3%-ma miuTiTa, rom biznesis ganviTarebisTvis regionSi kargi pirobebia.

diagrama 42



kvlevis interest Seadgenda ramdenad mniSvnel ovania sxvadasxva pirobebi sakuTari biznesis dasawyebad. kiTxvaze pasuxebis ganawil eba ix. cxril Si # (13)

| # | piroba | mniSvnel ovania | met-nakl ebad mniSvnel ovania | ar aris mniSvnel ovani |
|---|--------------------------------|-----------------|-------------------------------|------------------------|
| 1 | ful i | 98% | 2% | 0% |
| 2 | unar-Cvevebi | 81.1% | 16.9% | 0.4% |
| 3 | pol itikuri si tuacia | 62.6% | 33.9% | 2% |
| 4 | ekonomi kuri garemo | 75% | 21.8% | 1.5% |
| 5 | ganvi Tarebul i infrastruqtura | 75.4% | 20.4% | 2.8% |
| 6 | sakanonmdebl o garemo | 70.3% | 25.7% | 2% |
| 7 | krimi nogenu l i mdgomareoba | 80.2% | 18% | 0.4 |
| 8 | Semoqmedebi Ti azrovneba | 78.5% | 14.9% | 5% |

cxril i # 13

kvlevisas respondents vTxovdiT Seefasebina saxel mwifo organoebis saqmianoba mcire da saSual o biznesis mxardaWeris Tval sazrisiT. aRmoCnda, rom respondentTa azriT, yvel aze mniSvnel ovani mxardaWera mcire da saSual o biznesis regionSi aqvs prezidentis administracias. gamokiTxul Ta 29.7% Tvl is rom prezidentis aparatis mxridan mcire da saSual o biznesi mniSvnel ovani mxardaWeras iRebs, Semdegi organo, romelic aseve mniSvnel vнад uWers mxars mcire da saSual o biznes aris erovnul i banki 18.7%. daaxl oebiT erTnairad uWeren mxars premier ministris aparati 15.8%, parl amenti 15%, ekonomikis saministro 13.6%, finansTa saministro 13%, sofl is meurneobis saministro 14.3% da iusticiis saministro. gamokiTxul Ta 19.6% Tvl is rom sabaJo, mcire da saSual o biznesisaTvis mniSvnel ovani dabrkol ebas warmoadgens. aseve mniSvnel ovani dabrkol ebaa respondentTa 24.6%-is azriT saxel mwifo sagadasaxado departamenti da safinanso pol icia – 23.1%. cxril Si #14 mocemul ia respondentTa pasuxebis ganawil eba ama Tu im saxel mwifo organos mier mcire da saSual o biznesis mxardaWeris kuTxiT.

| saxel mwifo organo | mniSvnel ovani dabrkol eba | nawil obrivi dabrkol eba | neitral uri damokidebul eba | nawil obrivi mxardallera | mniSvnel ovani mxardallera |
|-----------------------------------|----------------------------|--------------------------|-----------------------------|--------------------------|----------------------------|
| prezidentis administracia | 4,20% | 9,40% | 14,30% | 37,60% | 29,60% |
| mTavroba | 3,10% | 9,20% | 28,10% | 39,30% | 15,80% |
| parl amenti | 4,00% | 6,60% | 31,00% | 39,60% | 15,00% |
| ekonomikis saministro | 3,70% | 9,40% | 31,00% | 38,50% | 13,60% |
| finansTa saministro | 4,80% | 13,40% | 26,10% | 38,20% | 13,00% |
| iusticiis saministro | 3,70% | 12,10% | 40,00% | 26,80% | 12,80% |
| sofl is-meurneobis saministro | 4,20% | 8,10% | 32,80% | 36,30% | 14,30% |
| saqarTvel os erovnul i banki | 4,20% | 7,20% | 22,40% | 42,90% | 18,70% |
| prokuratura | 8,60% | 15,00% | 39,30% | 22,80% | 9,20% |
| Sinagan saqmeTa saministro | 9,90% | 14,50% | 37,80% | 25,00% | 8,40% |
| sabaJo organoebi | 19,60% | 32,30% | 18,30% | 18,50% | 6,40% |
| saxel mwifo sagadasaxado inpeqcia | 24,60% | 31,00% | 16,90% | 17,60% | 5,50% |
| saxel mwifo safinanso pol icia | 23,10% | 28,60% | 17,80% | 21,70% | 4,40% |
| sasamarTl o | 6,80% | 19,80% | 39,80% | 22,30% | 6,60% |

cxril i # 14

unda arinisnos rom igive saxis kiTxvebi dasmul i iqna 99
biznesmenisaTvis samegrel os 4 qal aqSi. cxril Si # (15)
mocemul ia biznesmenebisa da mosaxl eobis Sefasebebis
gansxvaveba. statistikuri Sedegebidan gamomdinare, gansxvaveba
pasuxebSi mosaxl eobasa da biznesmenebs Soris mniSvnel ovania.
cxril Si mocemul ia gansxvavebis mniSvnel ovneba **Sig. (2-tailed)**¹².
rogorc cxril idan Cans sxvadasxva saxel mwifo organoebis
mimarT biznesmenebsa da mosaxl eobas gansxvavebul i Sefaseba
aqvT, gamonakl iss mxol od sasamarTl o warmoadgens, sadac
gansxvaveba ar dadasturda.

¹² Sig. (2-tailed)<0.005

| Sig. (2-tailed) | | mni Svel ovani dabrkol eba | | nawil obrivi dabrkol eba | | nawil obrivi mxardaWera | | mni Svel ovani mxardaWera | |
|-----------------|-----------------------------------|----------------------------|----------|--------------------------|----------|-------------------------|----------|---------------------------|----------|
| | | mosaxl eoba | bi znesi | mosaxl eoba | bi znesi | mosaxl eoba | bi znesi | mosaxl eoba | bi znesi |
| <0.005 | prezidentis administracia | 4,20% | 13,10% | 9,40% | 11,10% | 37,60% | 30,30% | 29,60% | 4,00% |
| <0.005 | premier-ministris aparati | 3,10% | 11,10% | 9,20% | 17,20% | 39,30% | 27,30% | 15,80% | 3,00% |
| <0.005 | parlamenti | 4,00% | 15,20% | 6,60% | 23,20% | 39,60% | 30,30% | 15,00% | 4,00% |
| <0.005 | ekonomikis saministro | 3,70% | 6,10% | 9,40% | 21,20% | 38,50% | 24,20% | 13,60% | 3,00% |
| <0.005 | finansTa saministro | 4,80% | 17,20% | 13,40% | 41,40% | 38,20% | 12,10% | 13,00% | 4,00% |
| <0.005 | iusticiis saministro | 3,70% | 3,00% | 12,10% | 12,10% | 26,80% | 12,10% | 12,80% | 1,00% |
| <0.005 | soflis-meurneobis saministro | 4,20% | 12,10% | 8,10% | 21,20% | 36,30% | 11,10% | 14,30% | 2,00% |
| <0.005 | saqarTvel os erovnul i banki | 4,20% | 5,10% | 7,20% | 6,10% | 42,90% | 35,40% | 18,70% | 1,00% |
| <0.005 | prokuratura | 8,60% | 4,00% | 15,00% | 27,30% | 22,80% | 0,00% | 9,20% | 0,00% |
| <0.005 | Si nagan saqmeTa saministro | 9,90% | 21,20% | 14,50% | 35,40% | 25,00% | 2,00% | 8,40% | 0,00% |
| <0.005 | sabaJo organoebi | 19,60% | 13,10% | 32,30% | 35,40% | 18,50% | 3,00% | 6,40% | 3,00% |
| <0.005 | saxel mwifo sagadasaxado inpeqcia | 24,60% | 19,20% | 31,00% | 36,40% | 17,60% | 4,00% | 5,50% | 4,00% |
| <0.005 | saxel mwifo safinanso policia | 23,10% | 34,30% | 28,60% | 51,20% | 21,70% | 2,00% | 4,40% | 2,00% |
| >0.005 | sasamarTl o | 6,80% | 23,20% | 19,80% | 18,20% | 22,30% | 5,10% | 6,60% | 5,10% |

cxrili # 15

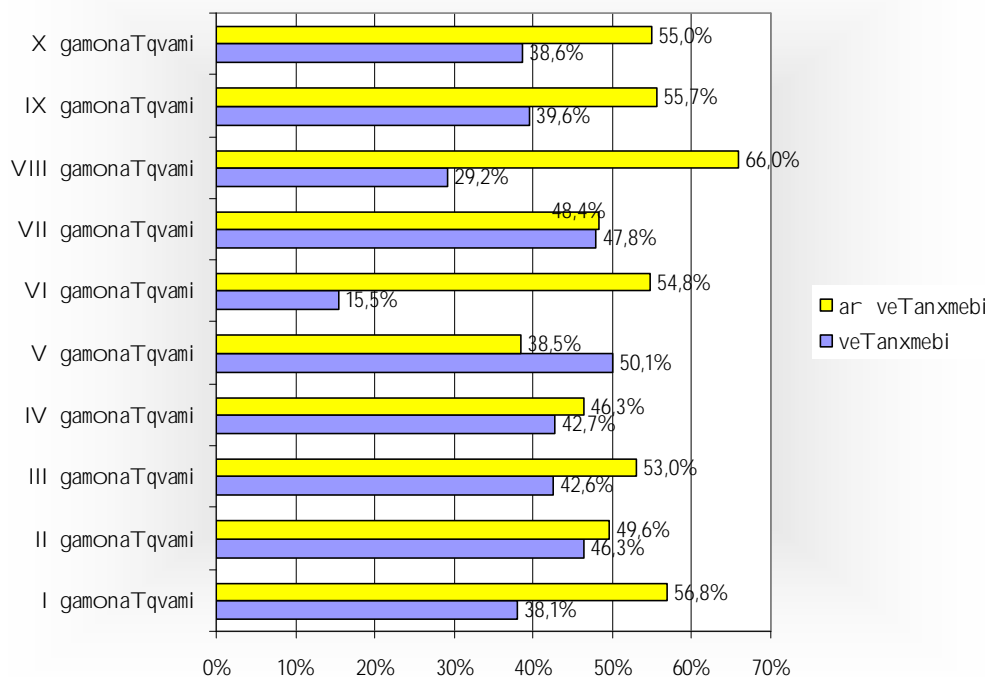
garda damokidebul ebebis Seswavi sa svadasxva saxel mwifo organizaciis mimaT mcire da saSual o biznesis xel Sewyobis mimaTul ebiT, kvl eva iTval iswinebda gvekl ia damokidebul ebebi samewarmeo garemos svadasaxva pirobebis mimaT. amisaTvis respondentebis eval ebodaT gamoexataT sakuTari damokidebul eba svadasxva gamonaTqvamebis mimaT. cxril Si # (16) mocemul i respondentTa pasuxebis ganawil eba.

| gamonaTqvamebi | veTanxmebi | Ufro veTanxmebi | Ufro ar veTanxmebi | ar veTanxmebi |
|---|------------|--------------------|-----------------------|------------------|
| 1. xel isufl ebis adgil obrivi organoebi zustad asrul eben xel isufl ebis central uri organoebis yvel a kanonsa da normatiul aqts | 20.7% | 17.4% | 30.6% | 26.2% |
| 2. adgil obrivi xel isufl ebis gadawyvetil ebebi ar zRudaven mewarmeobis ganviTarebas | 19.1% | 27.2% | 31.4% | 18.2% |
| 3. aSkaraa adgil obrivi xel isufl ebis Zal isxmeva gauadvil os moqal aqeebs samewarmeo saqmi anobis dawyeba | 14.5% | 28.1% | 33.6% | 19.4% |
| 4. Cems qal aqSi komunal ur da saxel mwifo sakuTrebaSi myof Senobaze saij aro qira misaRebia | 22.0% | 20.7% | 25.9% | 20.4% |
| 5. Cems qal aqSi miwaze saij aro qira misaRebia | 27.2% | 22.9% | 18.7% | 19.8% |
| 6. xel isufl ebis adgil obrivi organoebi uzrunvel yofen biznesis warmoebis Tanabar pirobebs | 15.2% | 24% | 35.0% | 19.8% |
| 7. xel isufl ebis adgil obrivi organoebis mier Seqmnil i infrastruqtura xel s uwyobs biznesis ganviTarebas | 16.1% | 31.7% | 31.9% | 16.5% |
| 8. Cems qal aqSi mewarmeobis mxardamWeri oragnoebi patiosnad asrul eben dakisrebul funqciebs | 10.1% | 19.1% | 36.3% | 29.7% |
| 9. Cems qal aqSi samewarmeo garemoxel sayrel ia investiciebisTvis da biznesis ganviTarebisTvis | 13.9% | 25.7% | 26.2% | 29.5% |
| 10. Cems qal aqSi samewarmeo garemoxeTesia, vidre saqarTvel os umetes regionebsi | 13.6% | 25.0% | 19.4% | 35.6% |

cxril i # 16

dadebiTi da uaryofiTi pasuxebis gaerTianebis Sedegad aRmoCnda, rom yvel aze metad ar eTanxmebian respondentebi gamonaTqvams: Cems qal aqSi mewarmeobis mxardamWeri organoebi patiosnad asrul eben dakisrebul funqciebs gamokiTxul Ta 66% ar eTanxmeba am gamonaTqvams. ganawil eba mocemul ia diagramaze # (43).

respondentTa damokidebul ebebi



| gamonaTqvamebi | mosaxl eoba | bi znesi | mosaxl eoba | bi znesi |
|--|-------------|----------|---------------|----------|
| | veTanxmebi | | ar veTanxmebi | |
| 1. xel isufl ebis adgil obrivi organoebi zustad asrul eben xel isufl ebis central uri organoebis yvel a kanonsa da normatiul aqts | 38,10% | 24,20% | 56,80% | 75,80% |
| 2. adgil obrivi xel isufl ebis gadawyvetil ebebi ar zRudaven mewarmeobis ganviTarebas | 46,30% | 20,20% | 49,60% | 78,70% |
| 3. aSkaraa adgil obrivi xel isufl ebis Zal isxmeva gauadvil os moqal aqeebs samewar meo saqmi anobis dawyeba | 42,60% | 12,20% | 53,00% | 85,90% |
| 4. Cems qal aqSi komunal ur da saxel mwifo sakuTrebaSi myof Senobaze saij aro qira misaRebia | 42,70% | 49,50% | 46,30% | 39,40% |
| 5. Cems qal aqSi miwaze saij aro qira misaRebia | 50,10% | 43,50% | 38,50% | 47,50% |
| 6. xel isufl ebis adgil obrivi organoebi uzrunvel yofen bi znesis warmoebis Tanabar pirobebs | 15,49% | 10,10% | 54,80% | 89,90% |
| 7. xel isufl ebis adgil obrivi organoebis mier Seqmnil i infrastruqtura(sainformacio,safinanso, sakomunikacio) xel s uwyobs bi znesis ganviTarebas | 47,80% | 19,20% | 48,40% | 79,80% |
| 8. Cems qal aqSi mewarmeobis mxardamWeri oragnoebi patiosnad asrul eben dakisrebul funqciebs | 29,20% | 21,20% | 66,00% | 70,70% |
| 9. Cems qal aqSi samewar meo garemo xel sayrel ia investiciebisTvis da bi znesis ganviTarebisTvis | 39,60% | 11,20% | 55,70% | 85,90% |
| 10. Cems qal aqSi samewar meo garemo ukeTesia, vidre saqarTvel os umetes regioneSi | 38,60% | 5,00% | 55,00% | 82,80% |

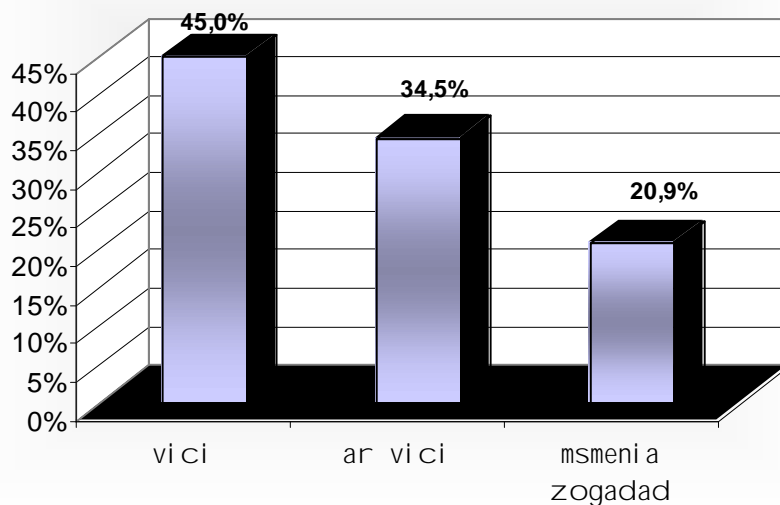
cxril Si # (17) mocemul ia is gansxvavebebi, roml ebic aRmoCnda kvl evis Sedegad. biznesisa da mosaxl eobis j gufebSi statistikurad gansxvavebebi mniSvel ovania¹³. rogorc cxril idan naTI ad Cans mewarmeebis gacil ebiT meti nawil i (82.8%) aZl evs uaryofiT Sefasebas regionis samewarmeo garemos da maTi umravl esoba (89.9%) Tvl is, rom adgil obrivi organoebi yvel a biznesmenisaTvis Tanabar pirobebs ar qmnis, roca mosaxl eobis azri am gamonaTqvamis Tanabrad gaiyo da 47% eTanxmeba gamonaTqvams, rom xel isuflebis adgil obrivi organoebi uzrunvel yofen biznesis warmoebis Tanabar pirobebs. aseve biznesmenTa gacil ebiT didi nawil i 85.9% skeptikurad aris ganwyobil i sakuTar qal aqSi investirebisa da ganviTarebis kuTxiT.

Tavi 12 mikrodafinanseba

kvl evis erT-erT amocanas warmoadgenda Segveswavi a respondentTa damokidebul ebebi da urTierTobebi mikrosakredito procedurebTan da zogadad mikrosakredito institutTan. kvl evis mizans ar Seadgenda gvekl ia respondentTa damokidebul eba ama Tu im mikrosafinanso organizaciasTan, amitom kvl evaSi ar iqna dasmul i am mimarTul ebis SekiTxvebi. rogorc Sedegebidan gairkva respondentTa 45%-ma icis safinanso saSual ebebis mozidvis iseTi saxis meqanizmebis Sesaxeb, rogoric mikrodafinansebaa, 34.5% - ar icis, xol o 20.9% smenia zogadad aseTi saxis dafinansebis Sesazl ebl obebis Sesaxeb. diagrama # (44). im respondentTagan vinc icis aseTi saxis dafinansebis Sesaxeb 39.6% gamouyenebia aseTi saxis dafinanseba finansebis mozidvis saSual ebad, xol o 58.4%-s ki ara. maT Soris vinc aris informirebul i da ar gamouyenebia aseTi saxis dafinanseba 60.8%-ma amis mizezad daasaxel a is rom ar iyo am saSual ebis gamoyenebis aucil ebl oba, 22.4%-ma Tavi CaTval a arakreditunarianad da amitom Seikava Tavi aseTi saSual ebis gamoyenebisagan, 3.5%-is azrit mikrosesxis pirobebi ar aris misaRebi, 13.3% -Tvis ki bankebis mxridan garantiis saxiT giraos moTxovna.

¹³ Sig. (2-tailed)<0.005

მიკროდამკრძობების შესახებ ინფორმაციის
ფლობა



მათ შორის ყველაზე მეტი პასუხისმგებელია დასახელებული ინფორმაციის, 77% მიაჩნია, რომ ინფორმაციის მიწოდება (პროცენტი, ვადები, საპროცენტო განაკვეთი) ადვილი და უპრობლემო იყო, ხოლო 18,2%-ის ინფორმაციის მიწოდება სრულად არაა შესაბამისი.

უნდა აღინიშნოს, რომ ამ რეზონანსში, ვინც მსახურობს 26,3%-ს მიკროსაფინანსო ინსტიტუტებისათვის, ხოლო მათ შორის ვინც არ არის დასაყმები მხოლოდ 12,1%. განსხვავება სტატისტიკურად მნიშვნელოვანია¹⁴, ანუ შესაძლებელია იტყვას, რომ დასაყმები უფრო მართებულად მიკროსაფინანსო ინსტიტუტებს, ვიდრე დასაყმები. დასაყმები მათ შორის 14% არ არის დასაყმები სანაღებო კრედიტის განაღდებას, როდესაც დასაყმები მათ კრედიტის განაღდებას ამ მიზეზით მხოლოდ 7,9% ამბობს უარს. სტატისტიკურად ეს განსხვავება მნიშვნელოვანია (Sig. (2-tailed)<0.005).

ამ რეზონანსში, ყველაზე მეტი პასუხისმგებელია მიკროსაფინანსო ინსტიტუტებისათვის 86,9% (107 რეზონანსი) მიწოდების აკრძალვის დასაყმება, 3,2% (4 რეზონანსი) დასაყმება არ მიუძღვის, ხოლო 9,76% (12 რეზონანსი) მათ შორის ვინც მიწოდების დასაყმების მოცულობა მერყეობს 100 ლარიდან 10 000 ლარამდე, ხოლო რეზონანსების მიწოდების მიკროსაფინანსების საშუალო მოცულობა 1789,34 ლარია. საერთო ჯამში გამოკითხული რეზონანსებისათვის მიწოდების აკრძალვის საერთო რაოდენობაა

¹⁴ Sig. (2-tailed)<0.005

173 566 l ari. mikrosexsis dafarvis vadebi meryeobs 1 Tvidan 18 Tvende, xol o saprocento ganakveTi 1.5%-dan 18%-mde. im respondentagan visac miRebul i aqvs dafinanseba 89,7%-s sexsis dafarvasi ar hqonia Seferxeba, 6,5% Seferxeba sexsis dafarvasi hqonia probl emebis gamo naRdi angariSworebis ganxorciel ebasTan dakavSirebiT, bazris koniunkturis cvl il ebasTan da saqmianobis sferos saxel mwifoebrivi regul aciebi/SezRudvebTan dakavSirebiT.

kvI eva iTval iswinebda gagvego ramdenad informirebul ni arian respondentebi Tu ra igul isxmeba cnebaSi mikrodafinanseba. rogorc kvI evis Sedegebidan irkveva, maT Soris vinc kiTxvaze icis Tu ara saSual ebebis moZidvis im meqanizmis Sesaxeb, rogoric mikrodafinansebaa 62,9% Tvl is rom cnebaSi mikrodafinanseba igul isxmeba sesxi sabrunavi kapital isaTvis, 17.1% Tvl is rom es aris aseve sesxi ZiriTadi saSual ebebisatvis, 1.8% Tvl is rom es aris aseve samomxmarebl o girao.

kvI evisas respondentebi afasebdnen im kriteriუმebis mniSvnel ovnebas, roml ebic moqmedeben maTi gadawyvetil ebis miRebaze aiRon sesxi. rogorc cxril idan # (18) Cans respondentTa azriT yvel a kriteriumi Zal ian mniSvnel ovania, mxol od bankis adgil mdebareobaze miviReT 21,5% SemTxvevaSi rom es kriteriumi ar aris mniSvnel ovani. aseve iqna Sedarebul i mosaxl eobis pasuxebi biznesis wamomadgenl ebis pasuxebTan aRniSnul i kriteriუმebis mixedviT, aRmoCnda, rom am SemTxvevaSi gansxvaveba j gufebSi ar arsebobs¹⁵.

| kriteriumi | Zal ian mniSvnel ovania |
|---|-------------------------|
| 1. sexsis mocul oba | 86.1% |
| 2. sexsis vada | 84.2% |
| 3. saprocento ganakveTis raodenoba | 79.2% |
| 4. moTxovnebi (moTxovnebis ar arseboba) giraoze | 66.0% |
| 5. sexsis xel misawvdoml oba | 71.0% |
| 6. xanmokl e procedura sexsis miRebaze | 65.7% |
| 7. sexsis naRdi angariSworebis forma | 70.0% |
| 8. Tqveni SesaZl ebl oba ganxorciel o gadaxda sexsze + SesaZl ebl oba miRo axal i sesxi | 61.1% |
| 9. bankis adgil mdebareoba | 35.3% |

cxril i # 18

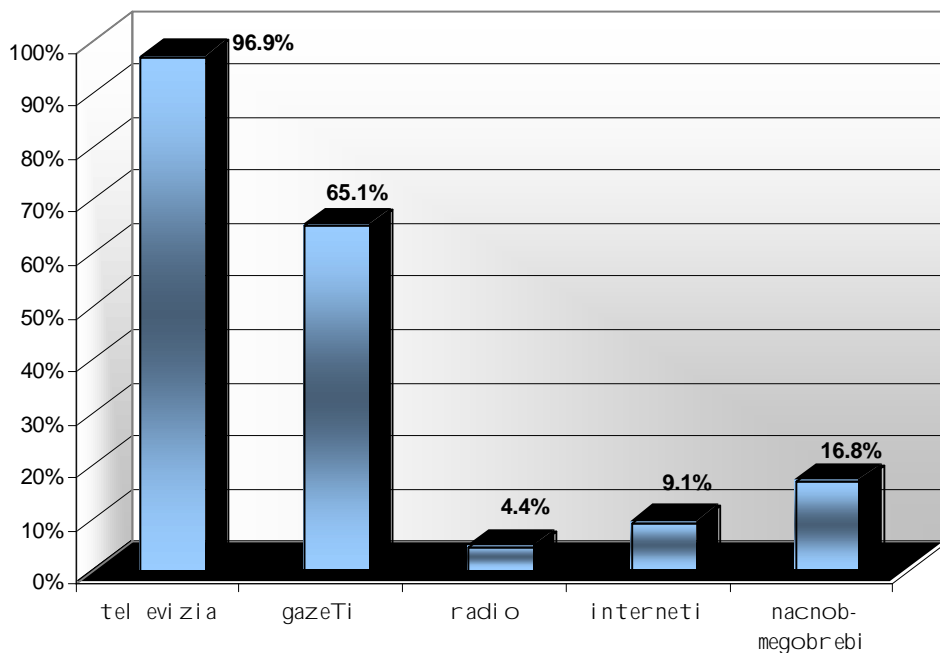
¹⁵ Sig. (2-tailed)>0.005

Tavi 13 sainformacio vel i

kvl evis amocanas warmoadgenda dagvedgina is sainformacio arxebi, romelic Sesazl ebel ia gamoyenebul iqnas respondentTaTvis informaciis misawodebl ad. rogorc kvl evam aCvena respondentTa absol uturi umravl esoba 96,9% informaciis miRebis saSual ebad tel evizias asaxel ebs, gamokiTxul Ta 65,1% gazeTic informaciis miRebis saSual ebas warmoadgens, 9,1% aseve informaciis wyarod internets iyenebs, xolo 16,8%-Tvis miTvis saWi ro informaciis miRebis erT-erT wyaros nacb-megobrebi warmoadgenen.

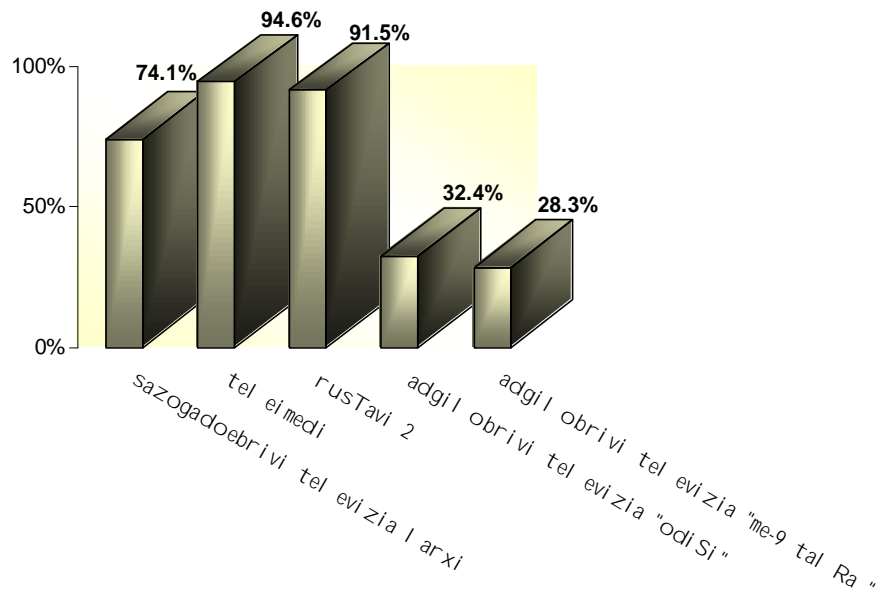
diagrama 45

umTavresad saidan i RebT TqvenTvis saWi ro informaciis



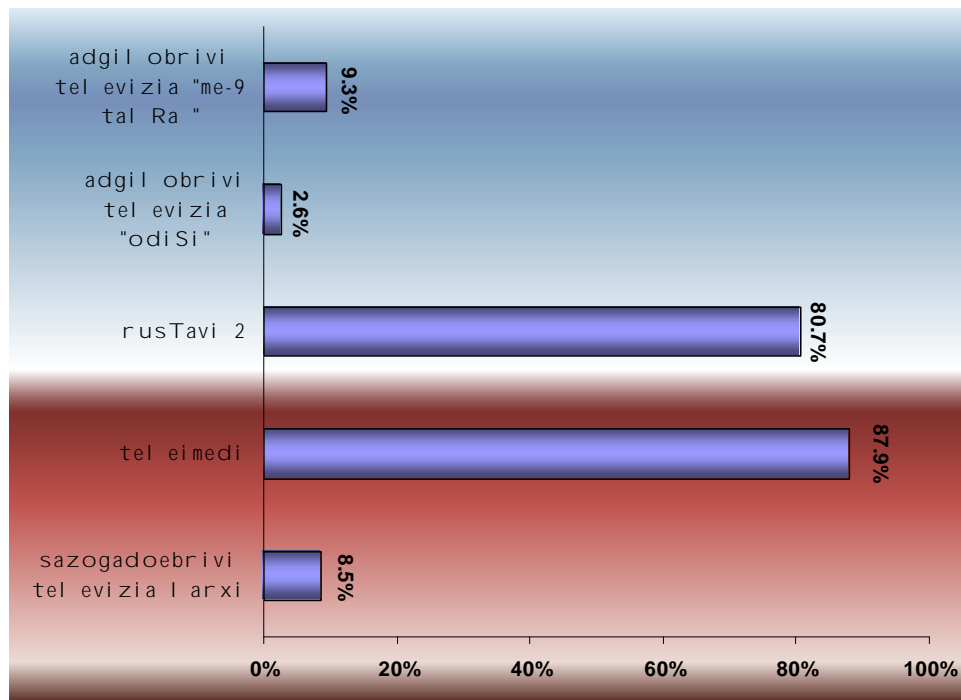
Tu romeli tel earxis miRebis saSual eba aqvT respondentebis, pasuxebis ganawil eba ix.diagrama # (46). rogorc diagramidan cans, yvel aze kargi dafarva aqvs tel eimedsa da rusTavi 2-s, rac Seexeba saqarTvel os sazogadoebriv tel evizias gamokiTxul Ta 74,1%-ma aRniSna, rom mas am tel eviziis gadacemebis miRebis saSual eba aqvT, aseve dabal i dafarva aqvs adgil obriv tel earxebis, odiSsa da me-9 tal Ras.

diagrama 46



respondentebz daesmodaT SekiTxva, romel i tel earxis sainformacio gadacemebs uyureben ufro xSirad, diagramaze #(47) mocemul ia respondentTa procentul i ganawil eba am SekiTxvaze gacemul i pasuxebis mi xedviT.

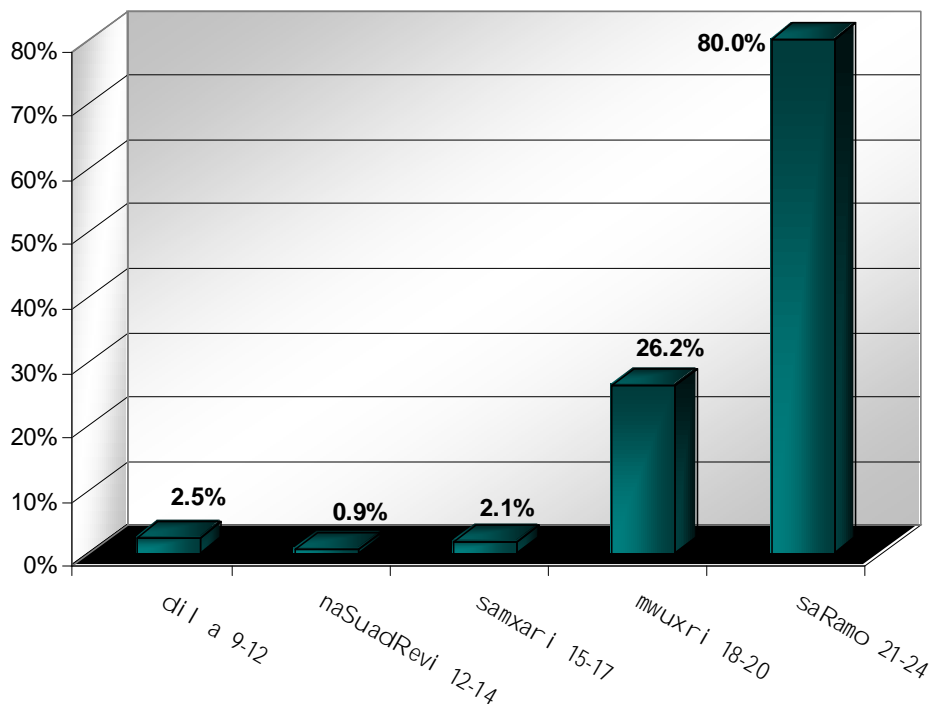
diagrama 47



rogorc diagramidan Cans regionis mosaxl eoba ZiriTadad tel eimedisa da rusTavi2-is sainformacio gadacembs uyureben. sazogadoebrivi tel evizia ki mxol od 8,5%-ma daasaxel a. garda imisa romel i tel earxis gadacembs uyurebs mosaxl eoba, gvainteresebda, romel i tel earxis sainformacio gadacembs endoba. rogorc kvl evis Sedegebidan irkveva, ndobis mandatic tel eimedisa da rusTavi 2-is sainformacio arxebs ufro maRal i aqvT – Sesabamisad 57,9% da 53,2%, xolo sazogadoebriv tel eviziis sainformacio gadacembs mxol od 3,4% endoba.

kvl evis interest Seadgenda dro, rodesac oj axis Sromisunariani wevrebi, rogorc wesi uyureben tel egadacembs. ganawil eba mocemul ia diagramaze # (48).

diagrama 48

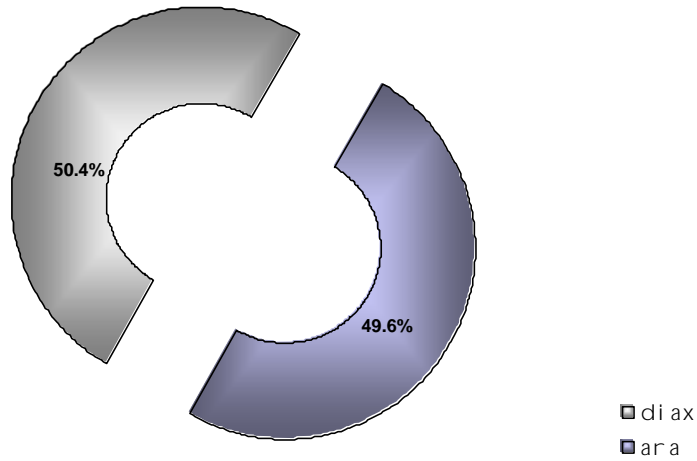


Tavi 14 sazogadoebrivi seqtoris Sefaseba

kvl evis erT-erT amocanas warmoadgenda gagvego regionis mosaxl eobis informirebul obis done regionSi da qveyanaSi moqmed sazogadoebriv seqtorze, rogorc kvl evam cxadyo regionis mosaxl eobis naxevars 50,9%-s smenia sazogadoebrivi seqtoris Sesaxeb.

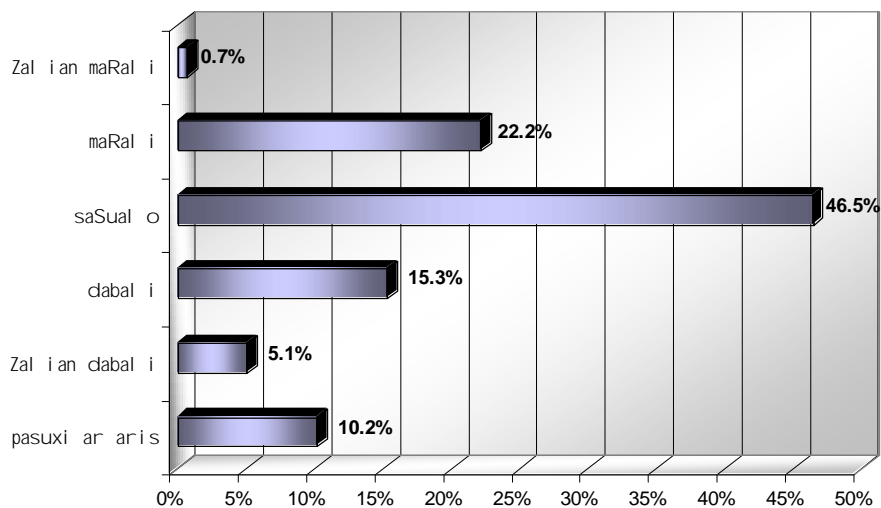
diagrama 49

გსმენიაT Tu ara sazogadoებრივი სეჟტორის
Sesaxeb



მაT Soris visac smenia sazogadoებრივი სეჟტორის Sesaxeb, 44.7% respondentisa asaxel ebs regional ur Tu qveynis sazogadoებრივი organizacias, roml is Sesaxebac aqvs informacia. respondentebis 46,5% miicnevs, rom sazogadoებრივი organizaciebis aqtivobis xarisxi saSual oa, 22,2% miicnevs, rom sazogadoებრივი organizaciebis aqtivobis xarisxi maRal ia, xol o 15,3% Tvl is, rom aqtivoba dabal ia. maTgan, visac sazogadoებრივი სეჟტორის Sesaxeb smenia 10.2%-ma სეჟტორის aqtivobis xarisxi ver Seafasa. diagrama # (50)

diagrama 50



cxrili # (19) mocemul ia sazogadoebrivi orgnizaciebi, romel sac icnoben respondentebi.

| | | |
|---|---|-----------------------------------|
| # | regional uri | qveynis |
| a | studentTa arasamT. organ. | wiTeli jvari |
| b | invalid bavSvTa da invalid bavSvTa dedaTa asociacia | axal gazrda iuristTa asociacia |
| g | wiTeli jvari | invalidTa luga |
| d | USAID | gaero |
| e | qal Ta ufl ebaTa dacvis asociacia | iunisefi |
| v | oxfam | USAID |
| z | hambre | Ria sazogadoeba saqarTvelo |
| T | gaero | konstanta |
| i | axal gazrda iuristTa asociacia | Tavisufl ebis instituti |
| k | aTinaTi | axal gazrda ekonomistTa asociacia |
| l | imedi | oxfam |
| m | gaenaTi | horizonti |
| n | Ria sazogadoeba saqarTvelo | evrazia |
| o | mcire da saSualo biznesis xel Semwyobi organizacia | afxazeTi |
| p | samoqal aqo sazogadoebis instituti | |
| J | VTJC | |
| r | ordu | |
| s | eqimebi fargl ebs gareT | |
| t | qaunTerfarTi | |
| u | Tavisufl ebis instituti | |
| f | ax. ekonomistTa asociacia | |
| q | urbanuli instituti | |

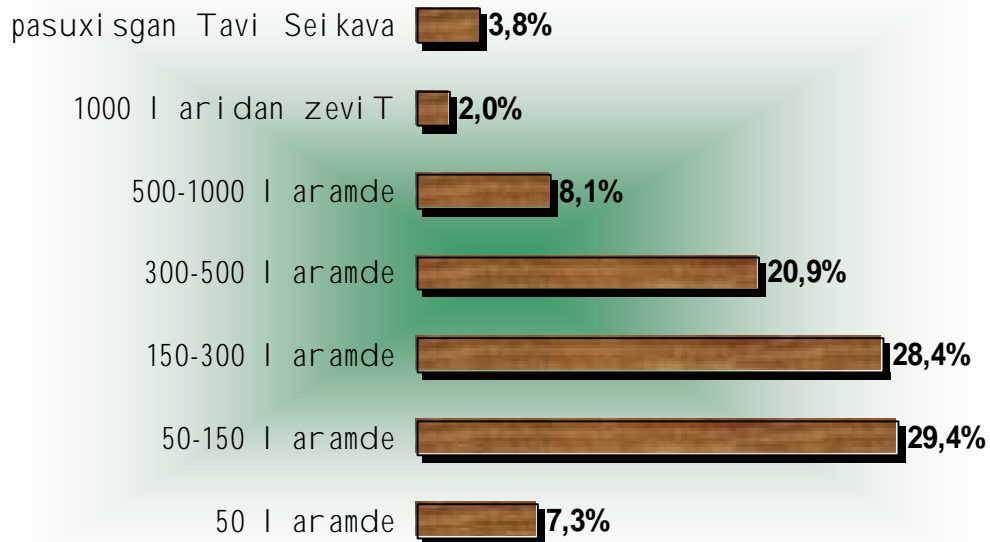
cxrili # 19

garda sazogadoebrivi organizaciebis Sesaxeb informaciis fl obisa gvainteresebda icnobs Tu ara regionis mosaxleoba saTemo organizaciebs, rogorc kvlevam acvena saTemo organizaciebis Sesaxeb informacia gamokitxulTa mxolod 5,9%-s aqvs.

Tavi 15 Semosavl ebi

kvლ evis amocanas warmoadgenda gvekvლ ia samegrel os 4 qal aqSi Semosavl ebisa da xarj ebis struqtura. am mizniT respondentebS daesmodaT SekiTxva, rogorc sakuTari aseve oj axis Semosavl ebis Sesaxeb. rogorc kvლ evis Sedegebma aCvena respondentTa saSual o Semosavl ebi meryeobs 150-300 l aramde. respondentTa oj axis Semosavl ebis procentul i ganawil eba naCvnebia diagramaze #51

diagrama 51



respondentTa piradi Semosavl ebis saSual o mniSvnel oba 51-150 l aris fargl ebSia, Tumca Tu davakvirdebiT diagramebS # (52)¹⁶ da # (53) aRmoaCenT, rom respondentTa oj axis Semosavl ebi ufro axl os aris normal ur ganawil ebaTan, vidre Tavad respondentebis.

¹⁶ st.Dev-standar tul i gadaxra, Mean-saSual o, N-mi Rebul i pasuxebis raodenoba

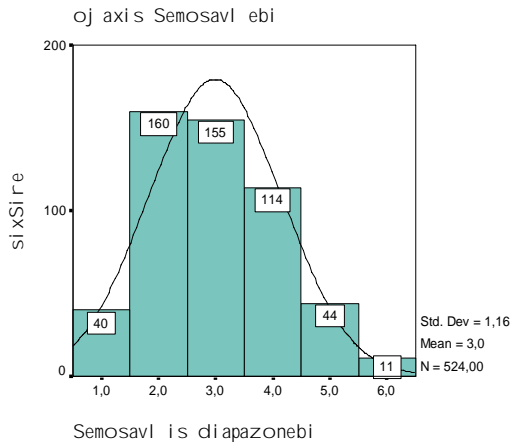


diagrama 52

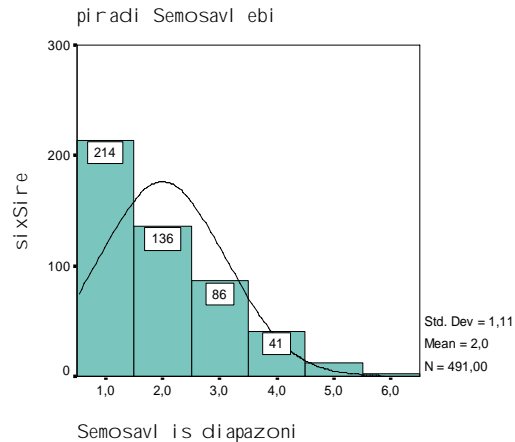


diagrama 53

diagramaze mocemul i Semosavl ebi s di apazoni s ganmar teba:

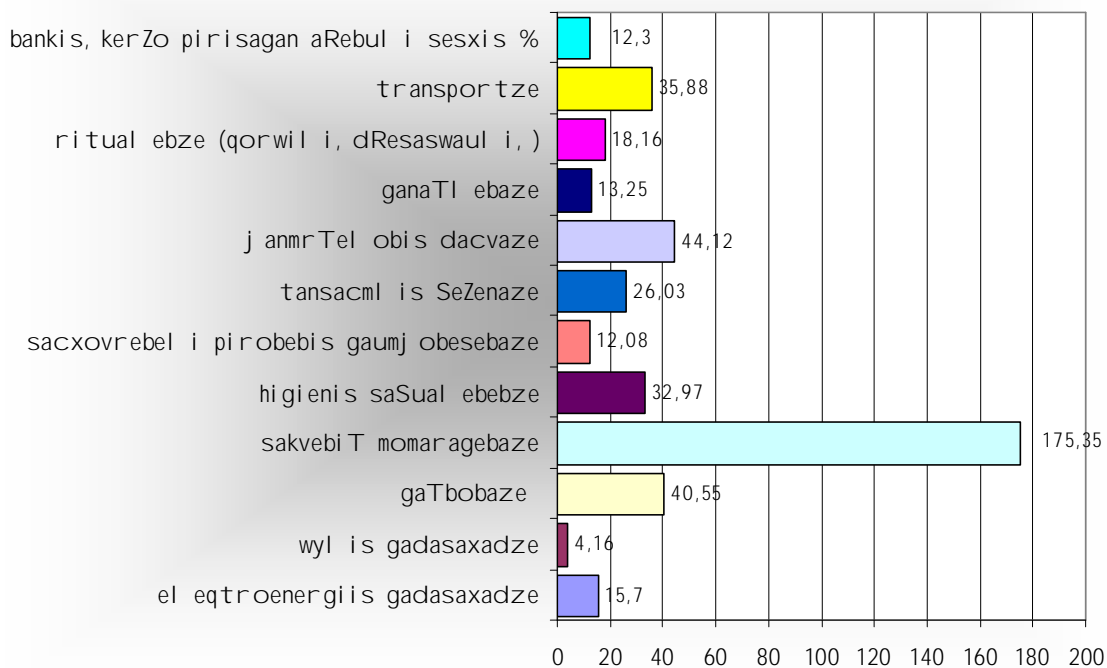
- 1 – 50 l aramde
- 2 _ 51-150 l aramde
- 3 _ 151-300 l aramde
- 4 _ 301-500 l aramde
- 5 _ 501-1000 l aramde
- 6 _ 1000-dan zevi T.

dadgenil i iqna aseve ra raodenobis Tanxas xarj avs TveSi respondentTa oj axi sxvadsaxva saxis saWiroebebze. rogorc Sedegebidan irkveva saSual od TveSi yvel aze mets xarj avs oj axi sakvebze. respondentTa danaxarj ebi s saSual o maCvnebel i Seadgens 175.35 l ars. yvel aze maRal i danaxarji sakvebze dafiqsirda TveSi 1000 l aris odenobiT, xol o yvel aze cota – 10 l ari. yvel aze mcire danaxarj s gamokiTxul Ta oj axebe akeTeben sacxovrebel i pirobebis gaumj obesebaze da ganaTI ebaze, Sesabamisad 12,14 l ari 13,28 l ari. daTvl il i iqna im respondentTa ganaTI ebi s xarj ebi, romel Tac oj axSi hyavT studenti an Tavad arian studentebi. aRmoCnda, rom aseTi oj axebe s xarj i 1.5-j er aRemateba maT xarj s visac ar hyavs oj axSi studenti, Tumca gansxvaveba statistikurad mniSvnel ovani am or j gufs Soris ar aRmoCnda, anu kvl evis Sedegebidan gamomdinare ar SeiZl eba iTqvas, rom studentebis oj axebe 1.5-j er mets xarj aven ganaTI ebaze saerTod.

diagramaxe #(54) mocemul ia sxvadasxva saWiroebebisaTvis ra Tanxebi exarj eba gamokiTxul Ta oj axebe saSual od TveSi.

diagrama 54

ოჯახის მიერ გაწეული ხარჯები ტვესი (ლარი)



სედა რეზიდენტის იკნა რესპონდენტთა შემოსავლები და ხარჯები არმოცნა, რომ რესპონდენტთა ხარჯვითი ნაწილის მონაცემები უფრო მარალია, ვიდრე შემოსავლების ნაწილის. დიაგრამები # (55) და # (56) მოცემულია რესპონდენტთა ოჯახის შემოსავლებისა და ხარჯების განაწილება. განსხვავება არსებობს, თუ შემოსავლი ნაწილი 300-500 ლარი აქვს 114 რესპონდენტს 21,7%-ს, ხარჯვითი ნაწილი 29% 151 რესპონდენტს, თუ 500-1000 ლარამდე შემოსავალი აქვს 44 რესპონდენტს 8,3%, 144-27% ამ ტანხას ხარჯავს და თუ შემოსავალი 1000 ლარზე ზევით აქვს 2%-ს 5% ამ ტანხას ხარჯავს ტვესი. განსხვავება სტატისტიკურად მნიშვნელოვანია¹⁷.

¹⁷ Sig. (2-tailed)<0.005

diagrama 55

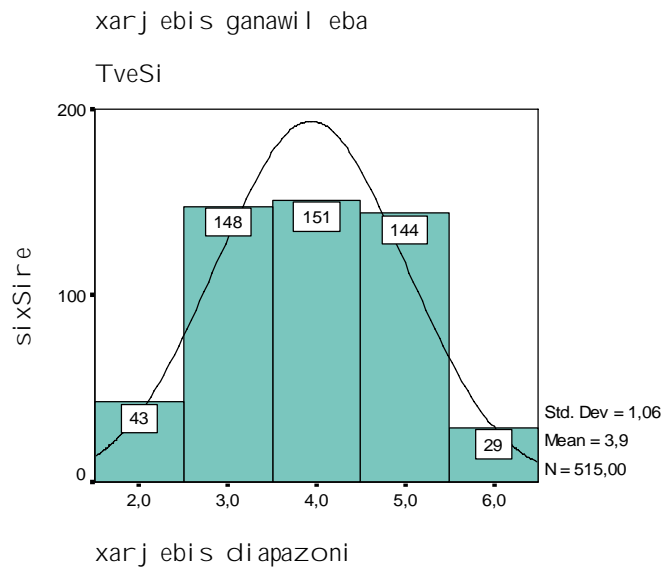
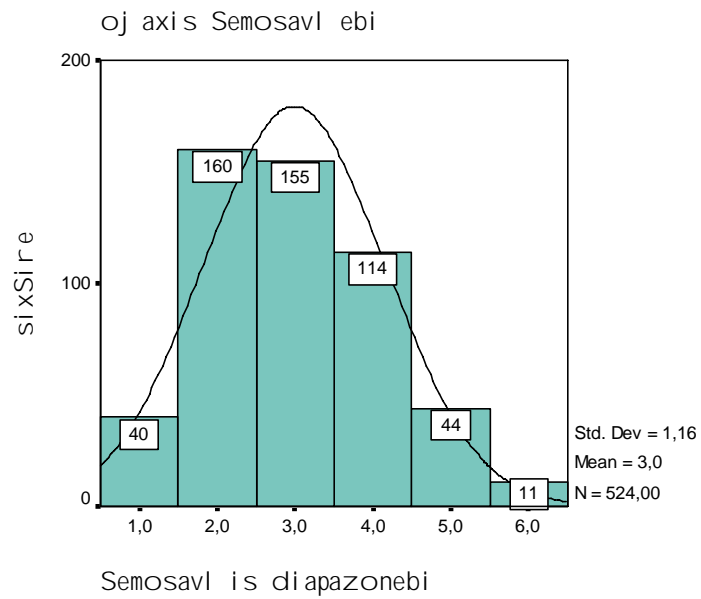
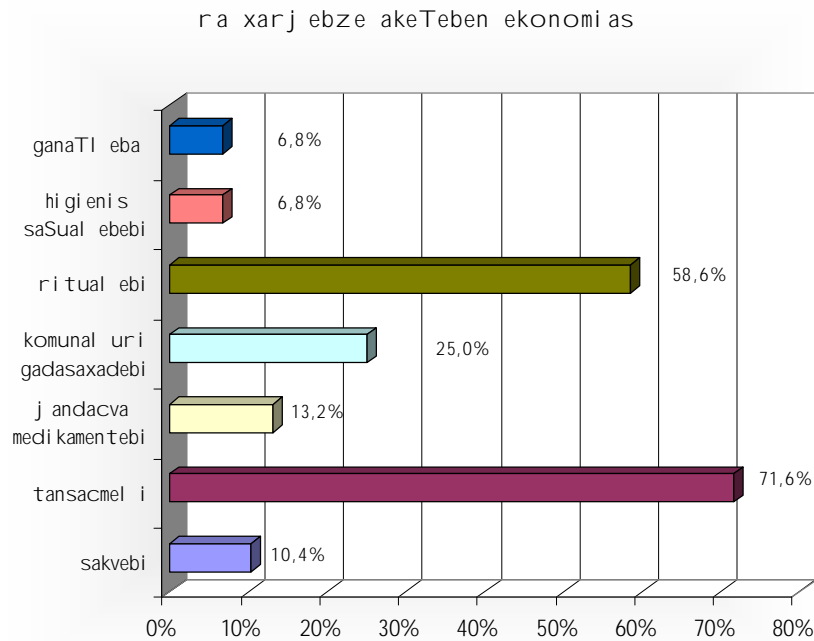


diagrama 56



გამოკვლეული იქნა თურა ხარჯებზე კეთდება უფრო ხშირად ეკონომია. რესპოდენტთა ოქავებს მიუხედავად სედეგები მოცემულია დიაგრამა # (57).

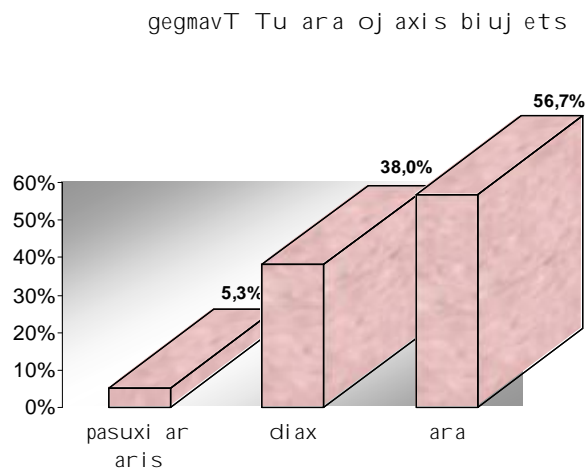
დიაგრამა 57



როგორც დიაგრამიდან ჩანს, ყველაზე მეტ შემთხვევაში ეკონომია კეთდება ტანსაცმელზე და რიტუალებზე.

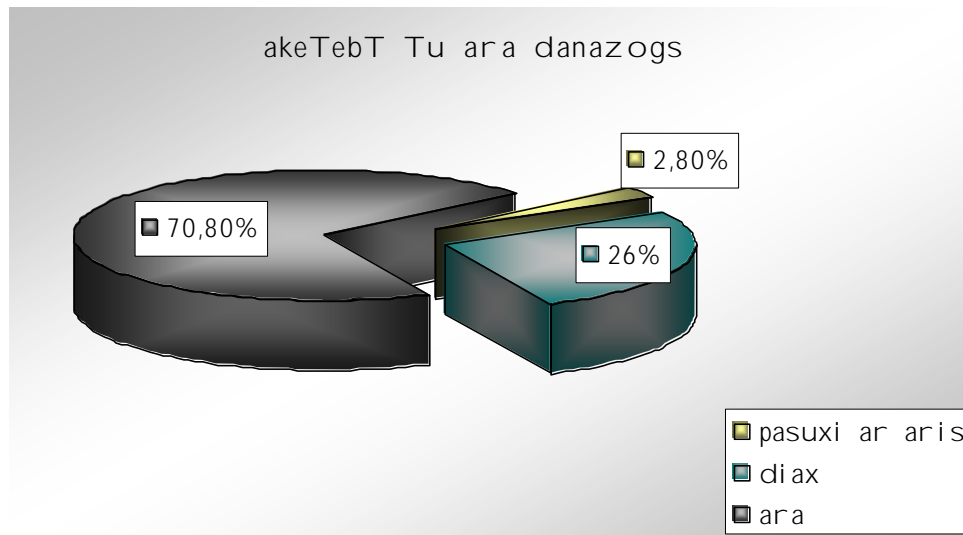
როგორც სედეგებმა აჩვენა, რესპოდენტთა 38% საკუთარი ოქავის ბიუჯეტს გეგმავს, 56,7% არ გეგმავს, ხოლო 5,3%-მა პასუხს თავი არაა.

დიაგრამა 58



მატგან ვინც გეგმავს ბიუჯეტს ტვიის რომ ყველაზე აუცილებელი ხარჯი, რომელიც უნდა გაიტვიდოს ბიუჯეტის დაგეგმვისას არის საკვები, 70,5% რეზონდენტებისა ტვიის რომ ეს ხარჯი ზალიან აუცილებელია, ასევე ზალიან აუცილებელი არის ჯანდაცვა 37,2%-ის აზრით და განათლება 39,6%-ის აზრით. ხოლო მეტ-ნაკლებად აუცილებელი ხარჯები 49,9%-თვის არის თანამშრომელი და კომუნალური გადასახადები 26,1%. როგორც დიაგრამიდან # (59) ჩანს გამოკითხულთა 70,8% არ აკეთებს დანაზოგს, 26% აკეთებს დანაზოგს.

დიაგრამა 59

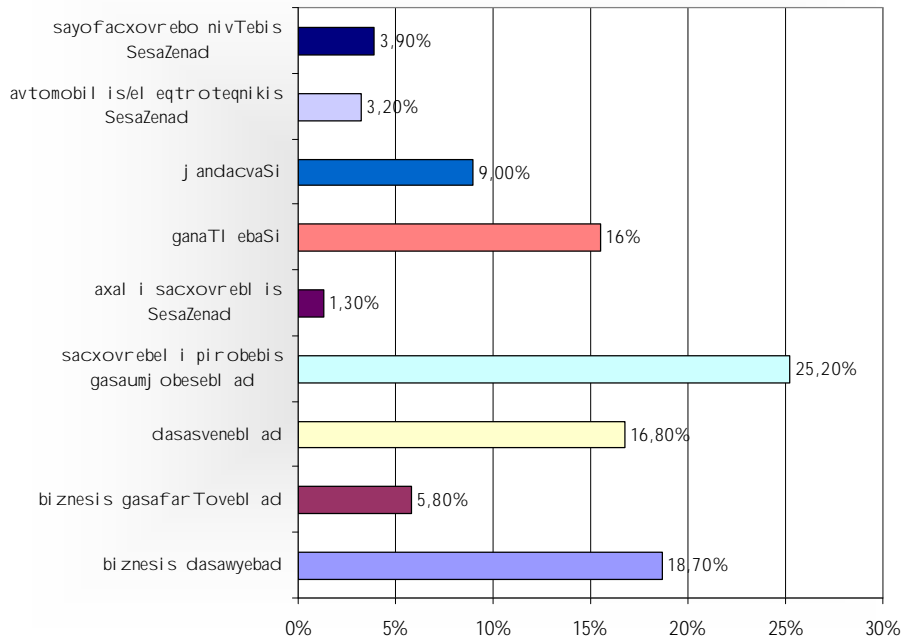


დიაგრამაზე # (60) მოცემულია რეზონდენტთა პასუხების განაწილება მათ შორის ვინც აკეთებს დანაზოგს, რას ფიგრობენ რასი შეიქმნება და ხარჯონ დანაზოგი. როგორც დიაგრამიდან ჩანს, რეზონდენტთა 25,2% ტვიის რომ დანაზოგი შესაძლებელია დაიხარჯოს საცხოვრებელი პირობების გასაუმჯობესებლად, ამ რეზონდენტების ბიუჯეტის ხარჯვით ნაწილში 2-ჯერ უფრო მეტს ხარჯავენ ამ მიზნით, ვიდრე დანარჩენი რეზონდენტები. სტატისტიკურად განსხვავება მნიშვნელოვანია (Sig. (2-tailed) < 0.005). 18,7% ტვიის, რომ დანაზოგი შესაძლებელია დაიხარჯოს ბიზნესის დასაწყობად, ხოლო 16,8% და 15,5% შესაბამისად ტვიის, რომ დანაზოგილი ტანხა შესაძლებელია დაიხარჯოს დასავენებლად და განათლებების მისაღებად.

არსადა მნიშვნელოვანია, რომ დასაწყობებულთა და დასავენებელთა შორის განსხვავება დანაზოგის გაკეთებაში არ არსებობს (Sig. (2-tailed) > 0.005).

diagrama 60

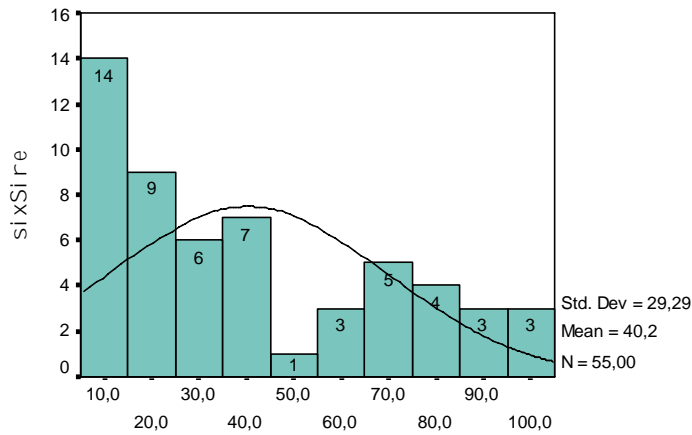
რაში შეიძლება დაიხაროს დანაზოგი



გამოკითვულ რესპონდენტთაგან სინამდვილეობას მხოლოდ 29,5% ეწევა, თურა პროცენტის კავებას ამ ჯგუფში ოჯახის საერთო შემოსავალში ოჯახის მემორალის საფილიო-სამდვილეო პროდუქციის გაყიდვების ნაწილებია დიაგრამაზე #61

diagrama 61

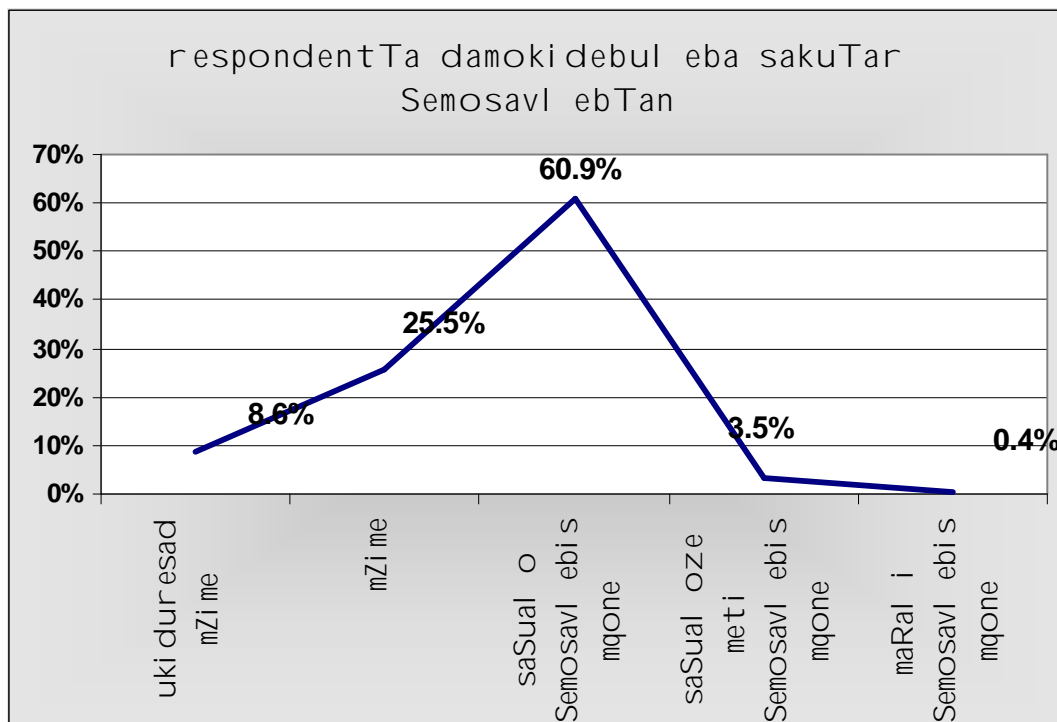
ოჯახის მემორალის საფილიო-სამდვილეო პროდუქტის გაყიდვა



შემოსავლის რაოდენობის კავებას ამ ტიპის შემოსავალში

sakuTari Semosavl ebis Sefasebisas gamoiyo 5 j gufi:
 I j gufi - gamokiTxul i respondentebidan 60,9% Tvl is, rom igi saSual o Semosavl ebis mqonea, Semosavl ebis ganawil eba am j gufSi aseTia 2.4% 50 l aramde, 20.5% 51-150 l aramde, 31.3% 151-300 l aramde, 9% 501-1000 l aramde, 2.1% 1000 l arze zevi T.
 II j gufi 25,5% Tvl is rom misi ekonomiuri mdgomareoba mZimea, Semosavl ebi am j gufSi ase ganawil da: 15.1% 50 l aramde, 47.5% 51-150 l ari, 26.6% 150-300 l ari, 6.5% , 6.5% 301-500 l ari da 0.7% 1000 l arze zevi T.
 III j gufi 8,6% Tvl is rom misi ekonomiuri mdgomareoba ukiduresad mZimea, - 23.4% 50 l aramde, 44.7% 51-150 l ari, 27.7% 151-300.
 IV j gufi 3,5% Tvl is rom misi Semosavl ebi saSual oze metia, 15.8% 301-500 l ari, 73.7% 501-1000 l ari, 5.3% 1000 l arze zevi T.
 V j gufi 0,4% Tvl is rom misi Semosavl ebi maRal ia. am j gufSi moxvda 2 respondenti romel Ta Semosaval i 1000 l arze zevi T aris.

diagrama 62



Tavi 16 Sromi Ti xel Sekrul ebebi

kvlevis erT-erT amocanas Seadgenda gagvego aformeben Tu ara Sromi T xel Sekrul ebebs dasaqmebul i respondentebi damqiravebl ebTan. rogorc Sedegebidan irkveva Sromi T xel Sekrul ebas damqiravebel Tan aformebbs dasaqmebul Ta 40.2%, ar aformebbs – 47.4% xol o pasuxisgan Tavi Seikava 12.4%. dasaqmebul Ta 34.4% aqvs xel Sekrul ebis piri. kiTxvaze ician Tu ara ra saxis gadasaxadebs ixdi an/ixdis damqiravebel i xel fasi dan ganawil eba mocemul ia diagramaze # (63).

diagrama 63

ra tipis gadasaxadebs ixdis
damqiravebel i xel fasi dan

